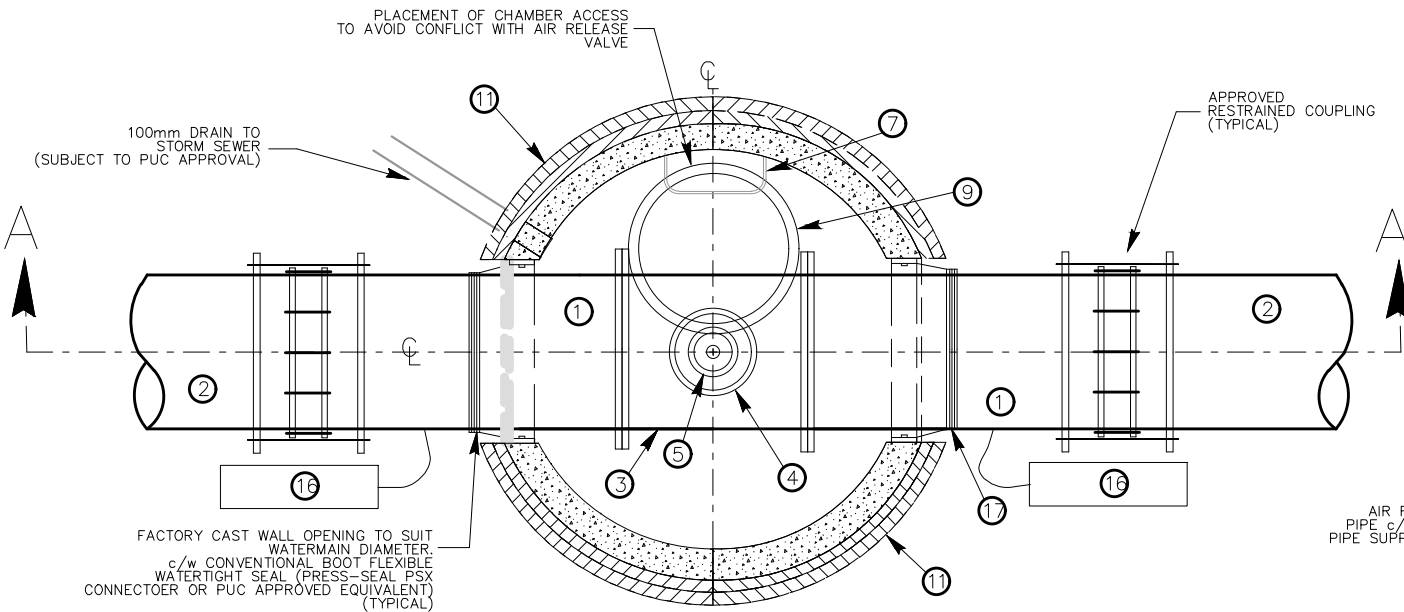
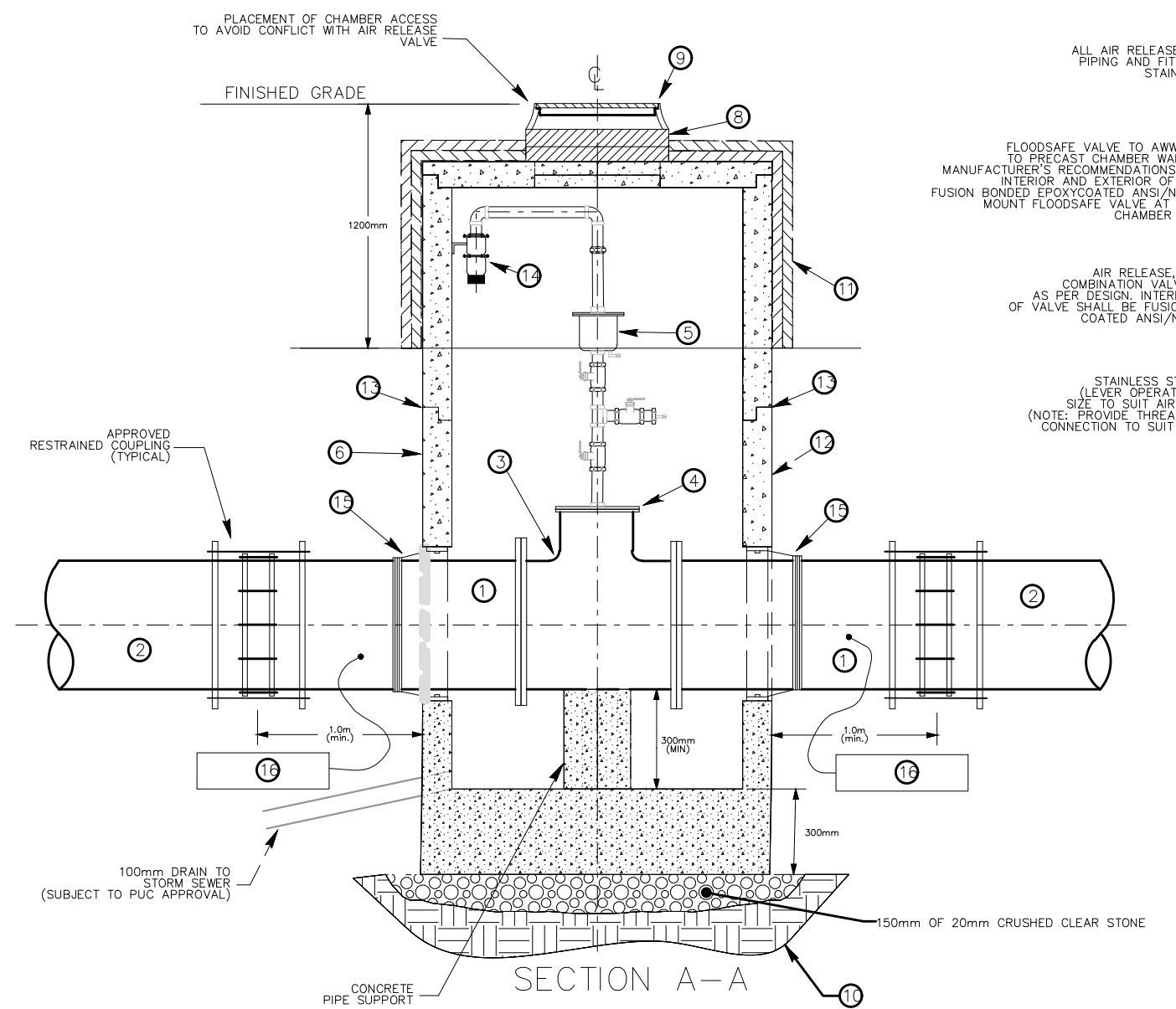


N.T.S.



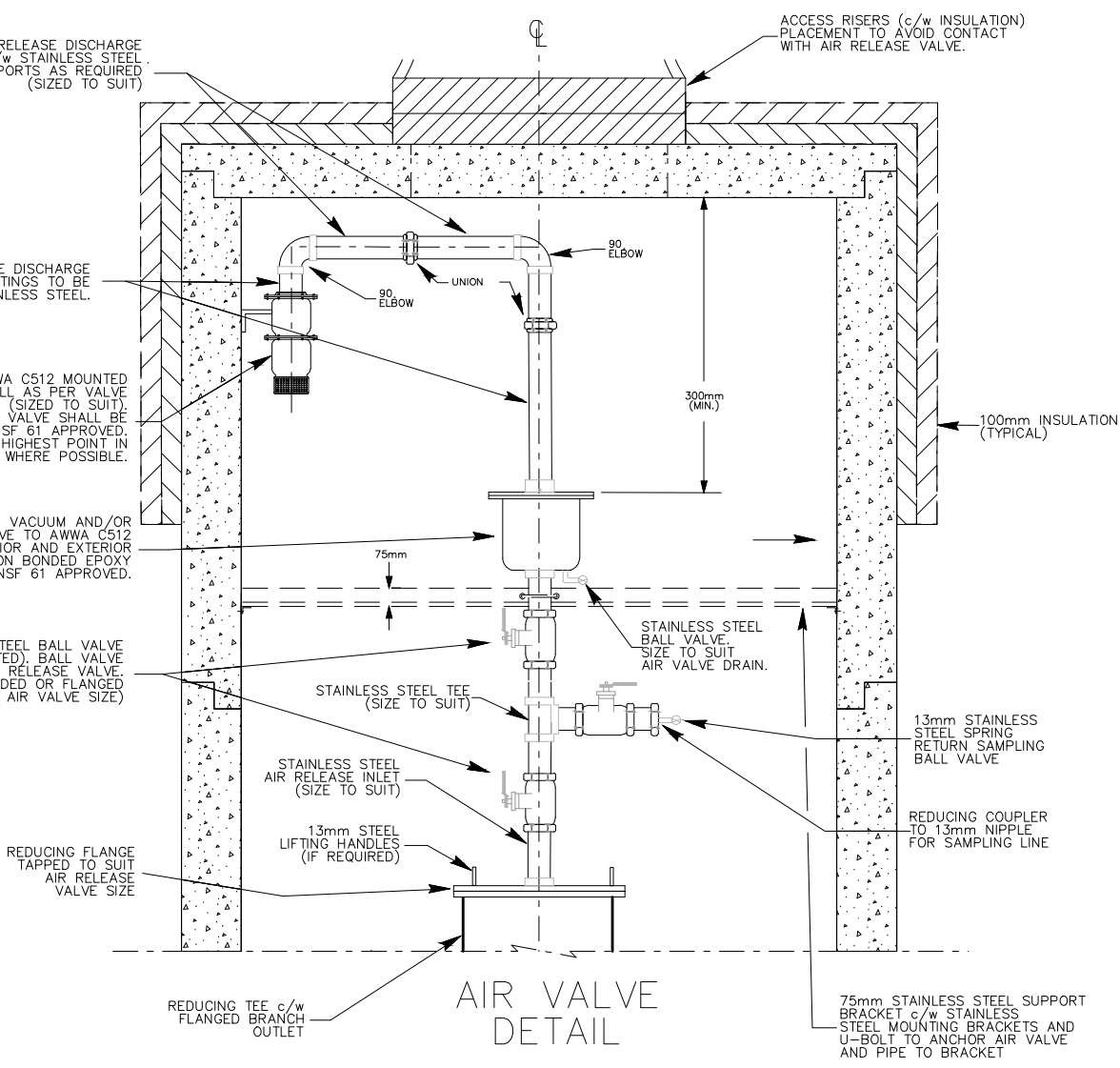
PLAN VIEW



SECTION A-A

ITEM                      ITEM DESCRIPTION

1. WATERMAIN PIPES INSIDE CHAMBER TO BE CEMENT LINED DUCTILE IRON.
2. WATERMAIN OUTSIDE CHAMBER CAN BE OR PVC OR PUC APPROVED ALTERNATE.
3. REDUCING TEE c/w 150mm DIA. FLANGED BRANCH OUTLET.
4. BLIND FLANGE TAPPED TO SUIT AIR VALVE SIZE.
5. AIR RELEASE, VACUUM AND/OR COMBINATION VALVE AS PER DESIGN.
6. CIRCULAR PRECAST 1800mm DIAMETER CHAMBER. (AS PER ASTM SPEC. C-478)
7. CHAMBER STEPS AT 300mm SPACING (FIRST STEP AT 75mm BELOW FRAME)
8. APPROVED ADJUSTMENT UNITS (MAXIMUM 400mm)
9. TYPE "A" CLOSED COVER AND FRAME c/w MAN HOLE COLLECTION TRAY. (CRETEX INFLOW DISH OR EQUIVALENT)
10. UNDISTURBED GROUND.
11. EXTERIOR CHAMBER INSULATION (100mm) TO BE HIGH DENSITY EXTRUDED POLYSTYRENE FOAM (H.I.35)
12. EXTERIOR SURFACES BELOW GRADE TO BE WATERPROOFED USING MEL ROL (WR MEADOWS) OR APPROVED EQUIVALENT, INSTALLED TO MANUFACTURER'S SPECIFICATIONS.
13. PRECAST CHAMBER SECTION JOINTS TO BE SEALED WITH A RUBBER GASKET.
14. VAL-MATIC FLOODSAFE BACK FLOW PREVENTER (OR AN APPROVED EQUIVALENT)
15. CONVENTIONAL BOOT FLEXIBLE WATERTIGHT SEAL (PRESS-SEAL PSX CONNECTOER OR PUC APPROVED EQUIVALENT)
16. 321b MAGNESIUM ANODE ON DUCTILE WATER MAIN (BOTH SIDES OF CHAMBER)



No.	REVISIONS	Date
1.	UPDATE TITLE BLOCK	11-03-2023

PETERBOROUGH UTILITIES COMMISSION

STANDARD WATERWORKS DRAWING

UTILITIES

PETERBOROUGH

COMMISSION

WATER

RIVERVIEW PARK AND ZOO

TITLE

COMBINATION AIR RELEASE VALVE CHAMBER

DRAWN BY: S. BILLINGS

DESIGNED: S. BILLINGS

APPROVED: K. CONLIN

DATE: 05-14-2020

B3423