



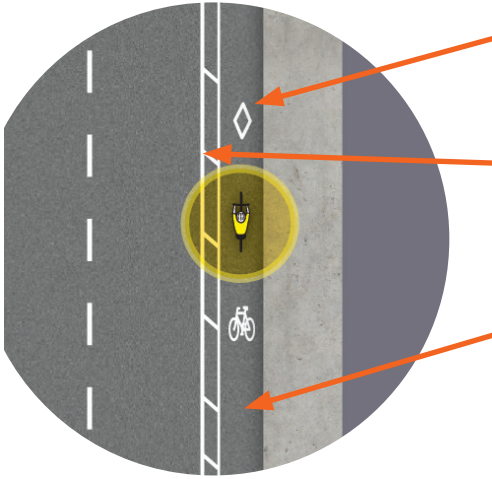
City of  
Peterborough



# How to Use Bike Lanes



# Bike Lane General Concepts



The bike stencil and diamonds show that this is a dedicated bike lane.

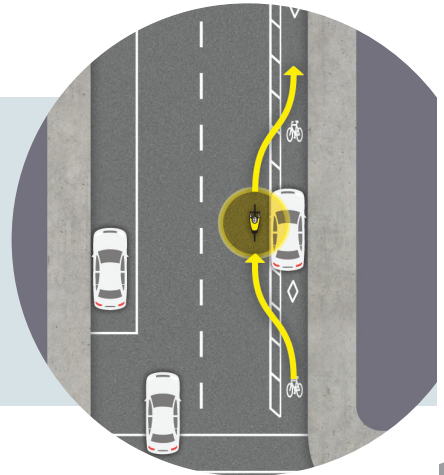
This is a bike lane buffer zone. Don't cycle or drive here. It provides a safe distance between vehicles and the bike lane.

Dedicated bike lanes can be used by cyclists, skateboarders, and e-bikes.

Other road users may not lawfully drive or park in a designated bike lane.

To safely pass a vehicle parked or stopped in a bike lane:

1. Check behind for oncoming cars
2. Signal to pass
3. Pass by moving into the vehicle lane when it's clear.



Coloured pavement in a bike lane alerts motorists and cyclists to potential conflict areas. In these locations, special attention must be given to one another.

You may see coloured pavement along the length of a bike lane, or as a spot treatment, such as a bike box.

Green is the colour used in North America.





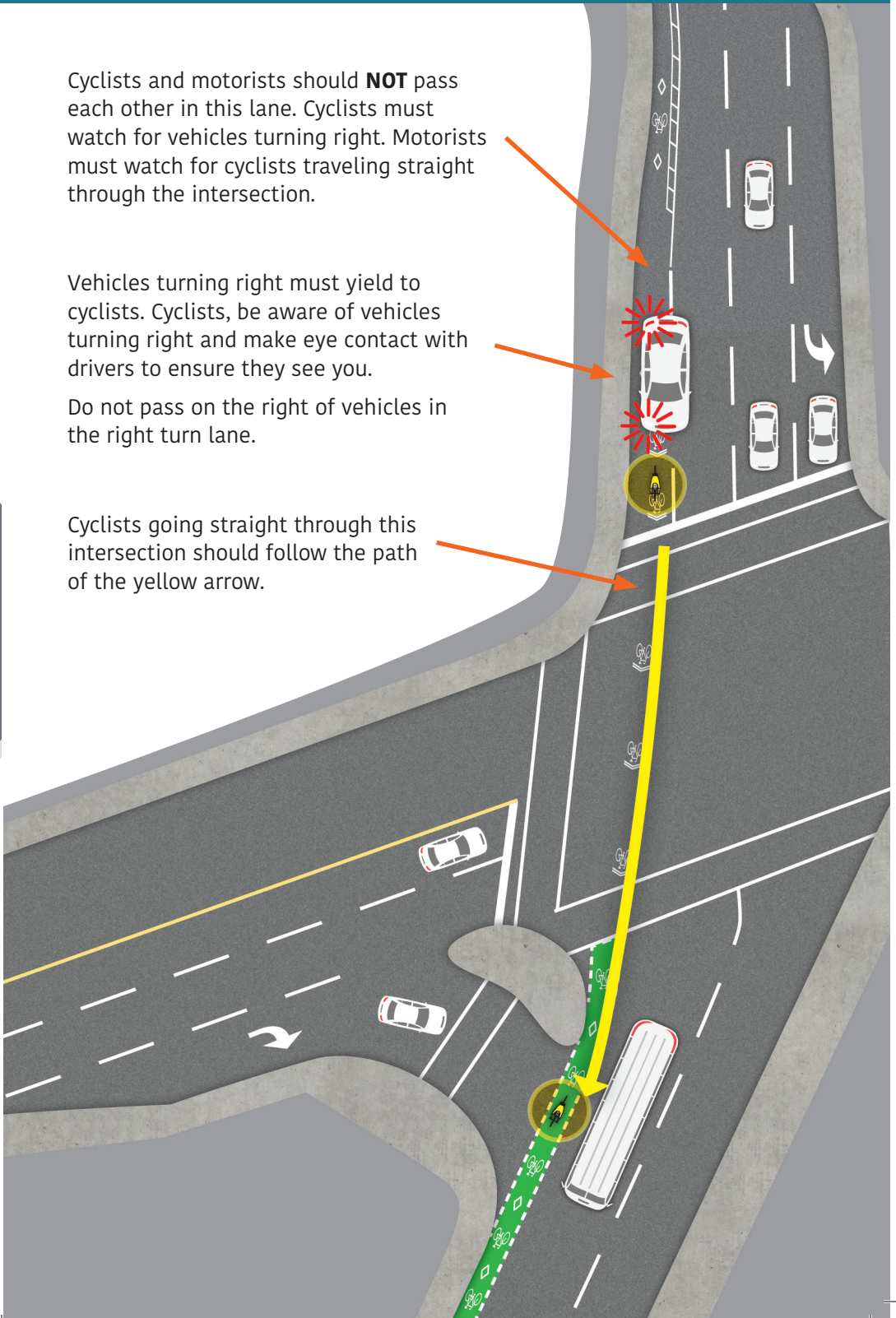
# Dedicated Right-Turn Lanes

Cyclists and motorists should **NOT** pass each other in this lane. Cyclists must watch for vehicles turning right. Motorists must watch for cyclists traveling straight through the intersection.

Vehicles turning right must yield to cyclists. Cyclists, be aware of vehicles turning right and make eye contact with drivers to ensure they see you.

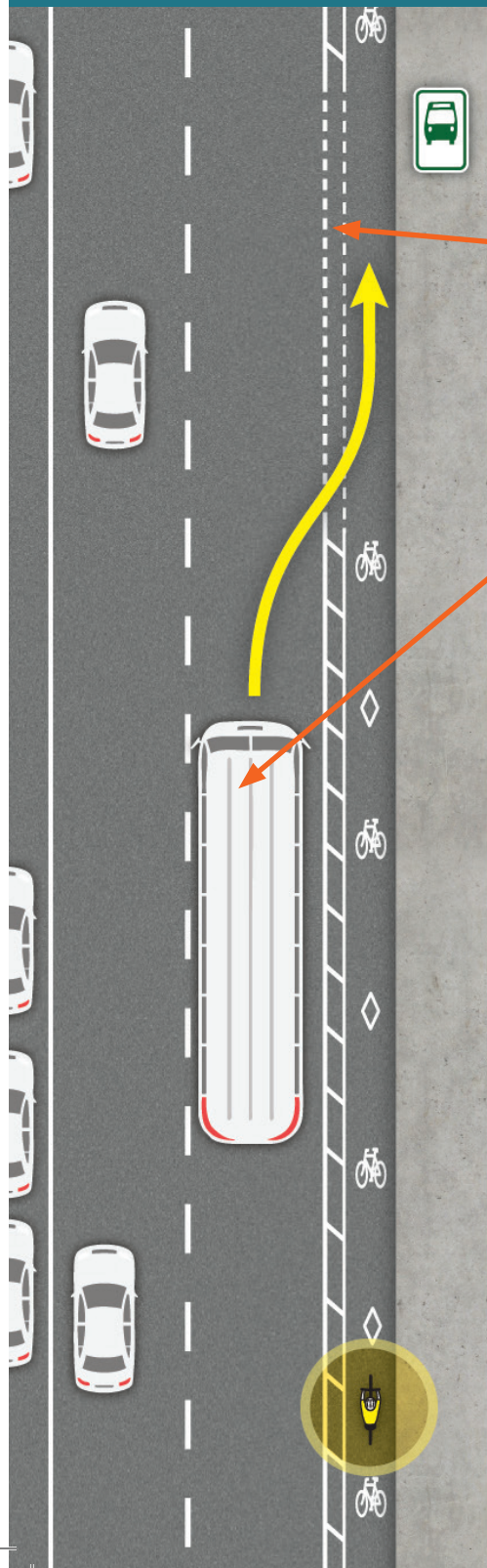
Do not pass on the right of vehicles in the right turn lane.

Cyclists going straight through this intersection should follow the path of the yellow arrow.





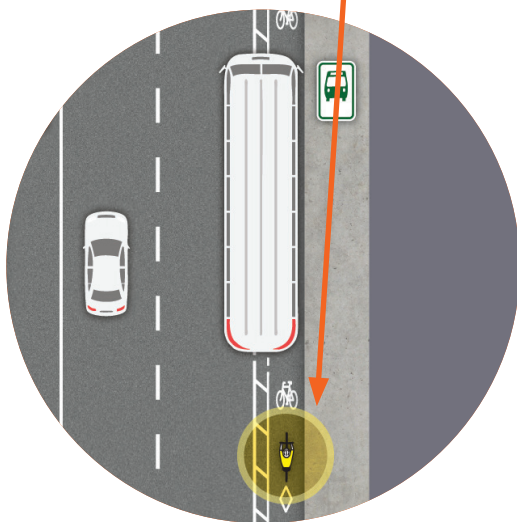
# City Transit Stops



Dashed lines in the bike buffer zone indicate a transit stop when not near an intersection.

Buses must check that the bike lane is clear before entering the bike lane to make a transit stop.

If a bus is at the transit stop blocking the bike lane, stop and wait for the bus to leave before continuing.





# Turning Left Using a Bike Box

A bike box allows cyclists to turn left without leaving the bike lane.

On red light, wait in green painted section of bike lane. On the green light, cycle from the bike lane to the left-turn Bike Box.

Enter the left turn Bike Box, and turn to face your new direction.

Cycle through the intersection on the green light.



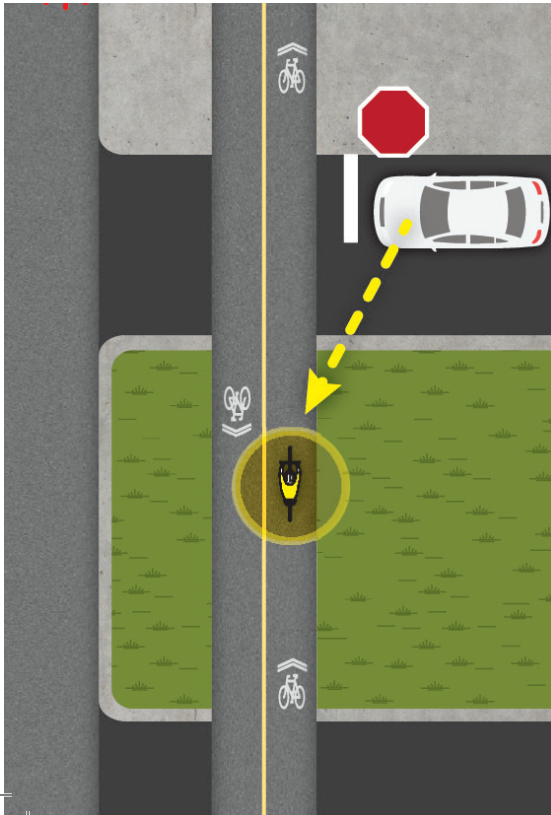
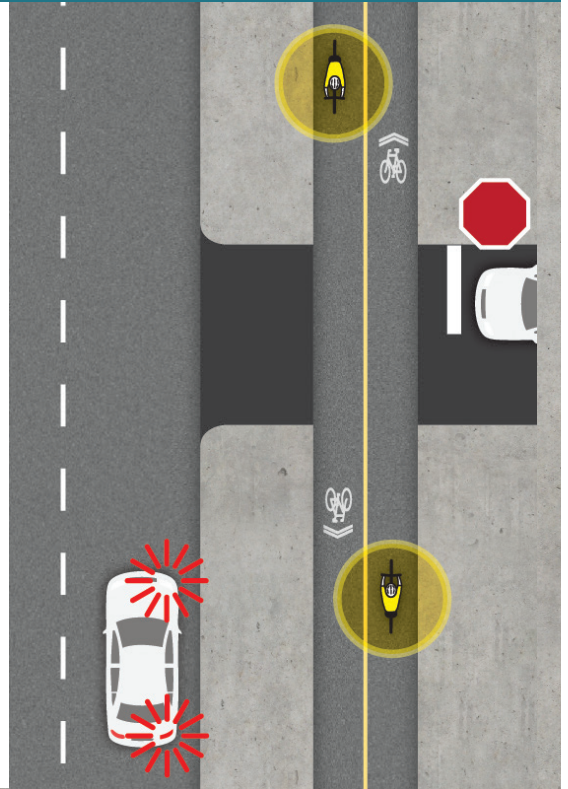


# Separated Bike Paths & Driveways

Entering a driveway across a multi-use path, vehicles must look for path users in both directions.

Vehicles must wait until the path is clear before turning into the driveway.

Cyclists should go slowly where driveways cross paths and look for cars turning in and out of the driveway. Make eye contact with drivers to ensure they see you.



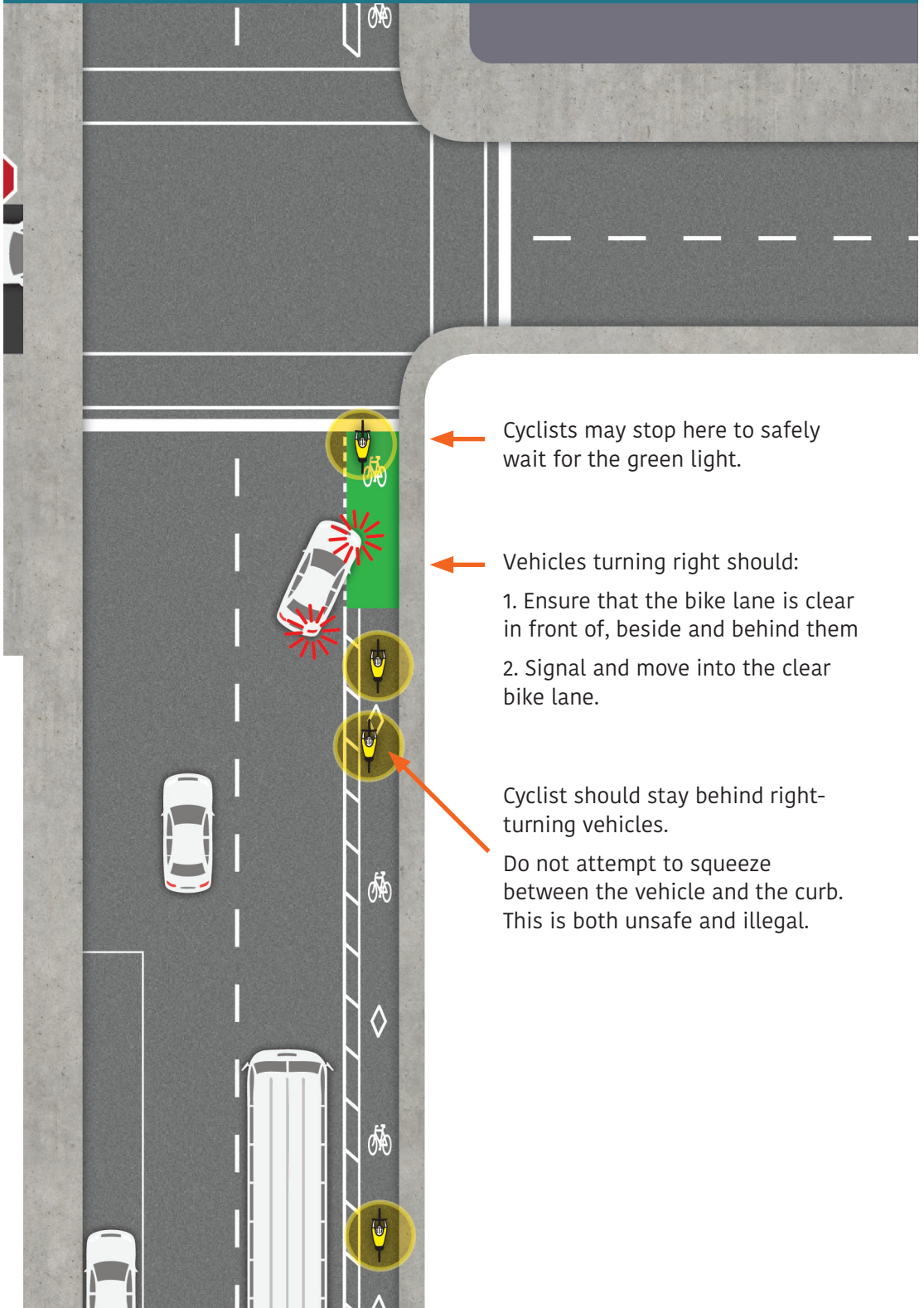
Exiting a driveway across a multi-use path, vehicles must stop before the path and check both ways for path users.

When the path is clear, vehicles may cross the path and stop at the curb edge to negotiate their turn into traffic.





# Vehicles Turning Right Across Bike Lane



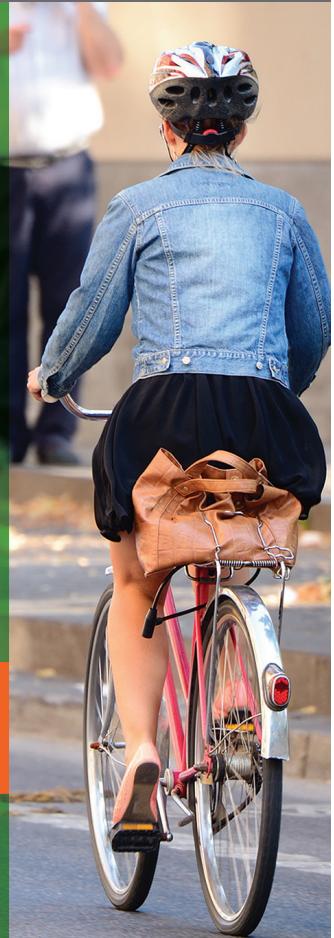




*Put a*  
**BUSLOAD  
OF DISTANCE**  
*Between*  
**YOUR CAR  
and  
BIKE RIDERS**



*It's the* **LAW**



[www.peterboroughmoves.com](http://www.peterboroughmoves.com)

705-742-7777 x 1485