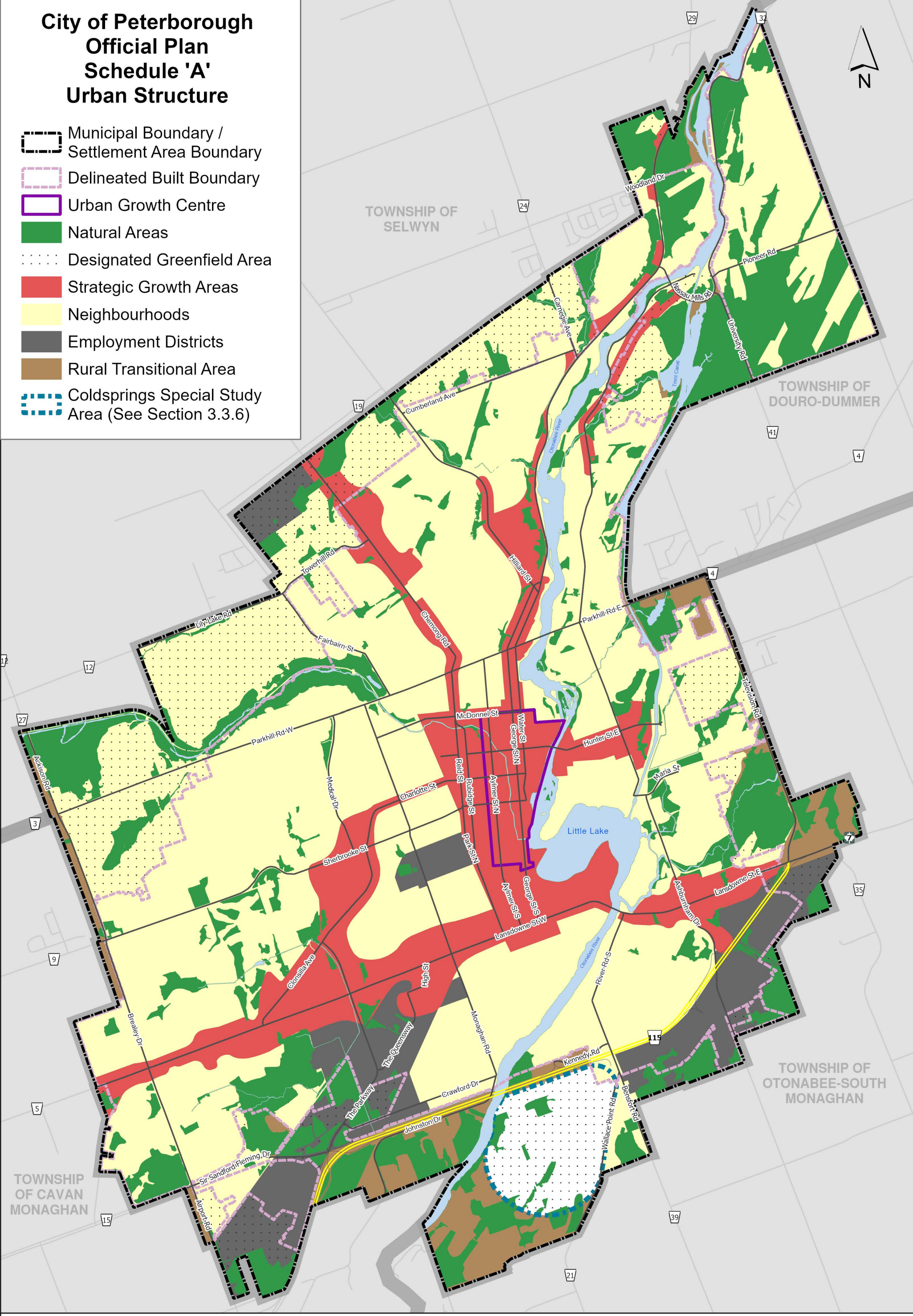
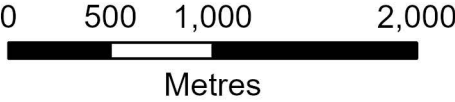


**City of Peterborough
Official Plan
Schedule 'A'
Urban Structure**

-  Municipal Boundary / Settlement Area Boundary
-  Delineated Built Boundary
-  Urban Growth Centre
-  Natural Areas
-  Designated Greenfield Area
-  Strategic Growth Areas
-  Neighbourhoods
-  Employment Districts
-  Rural Transitional Area
-  Coldsprings Special Study Area (See Section 3.3.6)

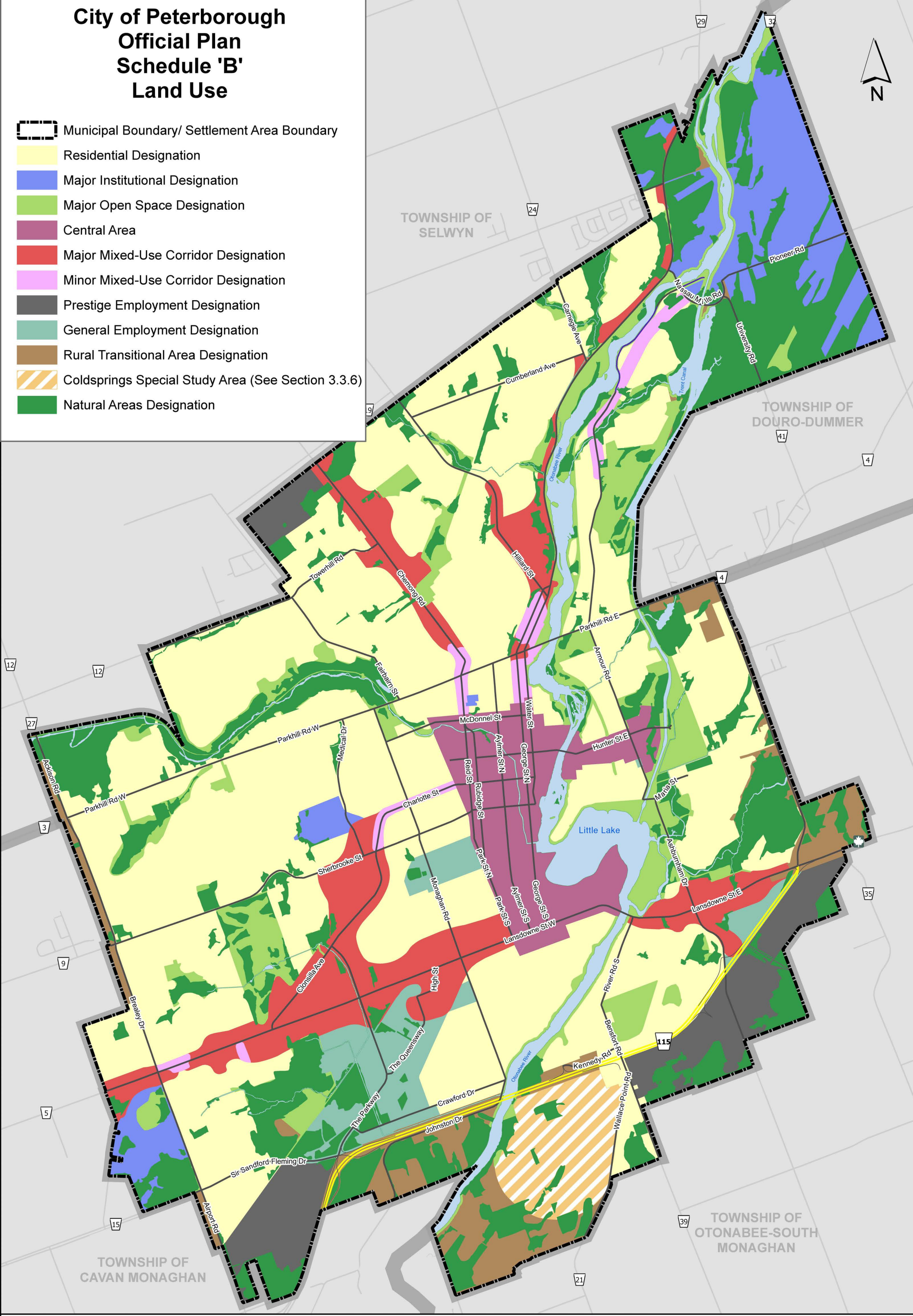


DISCLAIMER OF ALL LIABILITIES - The Corporation of the City of Peterborough, its employees, consultants and agents, make no representation or warranty concerning the accuracy, validity or fitness for use of the contents of this digital or hard copy mapfile, and disclaims all liability for any claims for damages or loss arising from their use or interpretation by any party. A mapfile does not replace a survey nor is it to be used to provide a legal description.

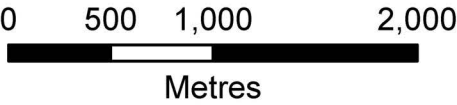


City of Peterborough
Official Plan
Schedule 'B'
Land Use

- Municipal Boundary/ Settlement Area Boundary
- Residential Designation
- Major Institutional Designation
- Major Open Space Designation
- Central Area
- Major Mixed-Use Corridor Designation
- Minor Mixed-Use Corridor Designation
- Prestige Employment Designation
- General Employment Designation
- Rural Transitional Area Designation
- Coldsprings Special Study Area (See Section 3.3.6)
- Natural Areas Designation

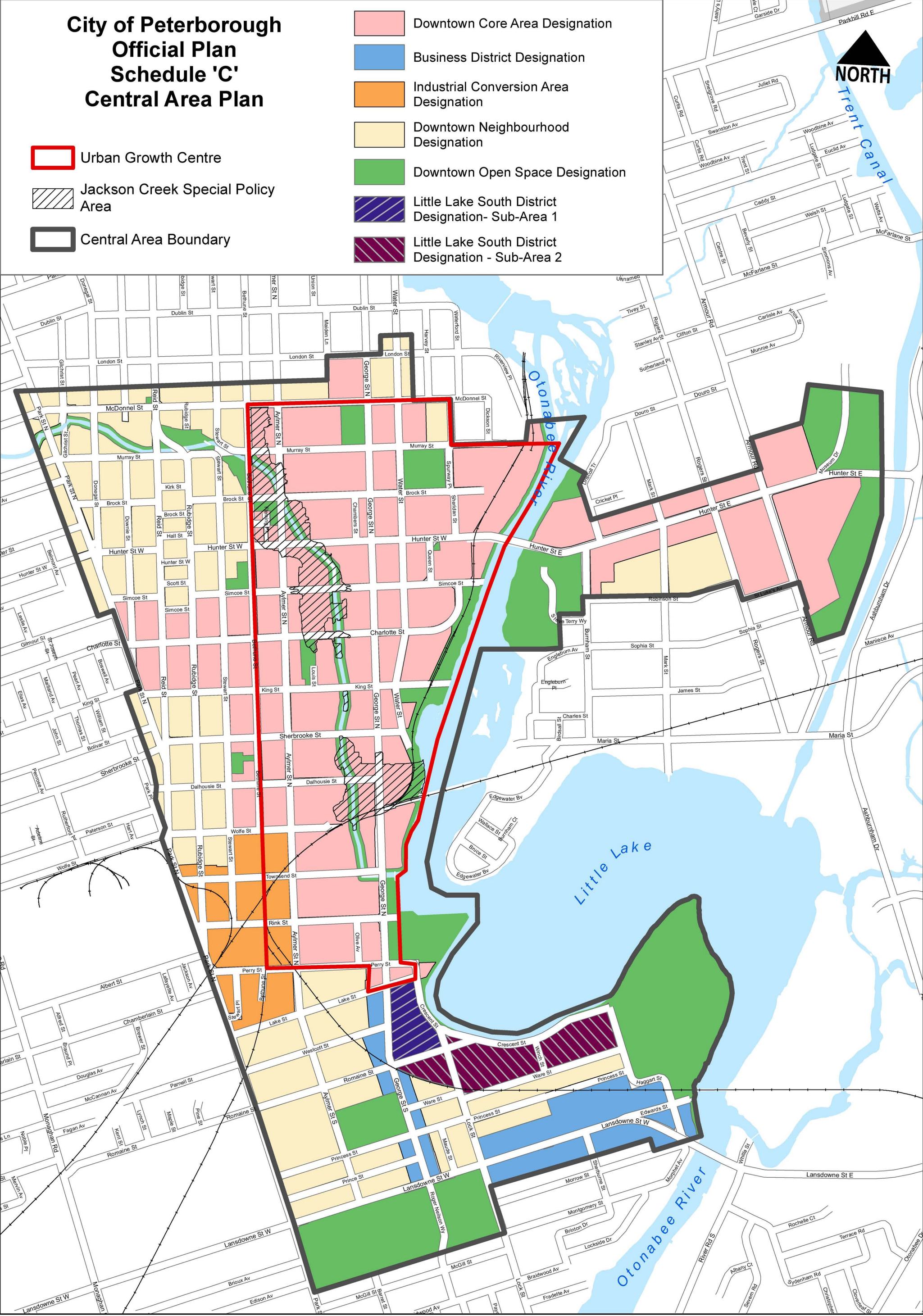


DISCLAIMER OF ALL LIABILITIES - The Corporation of the City of Peterborough, its employees, consultants and agents, make no representation or warranty concerning the accuracy, validity or fitness for use of the contents of this digital or hard copy mapfile, and disclaims all liability for any claims for damages or loss arising from their use or interpretation by any party. A mapfile does not replace a survey nor is it to be used to provide a legal description.

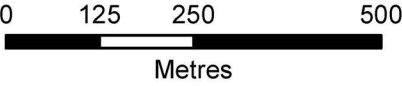


City of Peterborough
Official Plan
Schedule 'C'
Central Area Plan

- Urban Growth Centre
- Jackson Creek Special Policy Area
- Central Area Boundary
- Downtown Core Area Designation
- Business District Designation
- Industrial Conversion Area Designation
- Downtown Neighbourhood Designation
- Downtown Open Space Designation
- Little Lake South District Designation- Sub-Area 1
- Little Lake South District Designation - Sub-Area 2

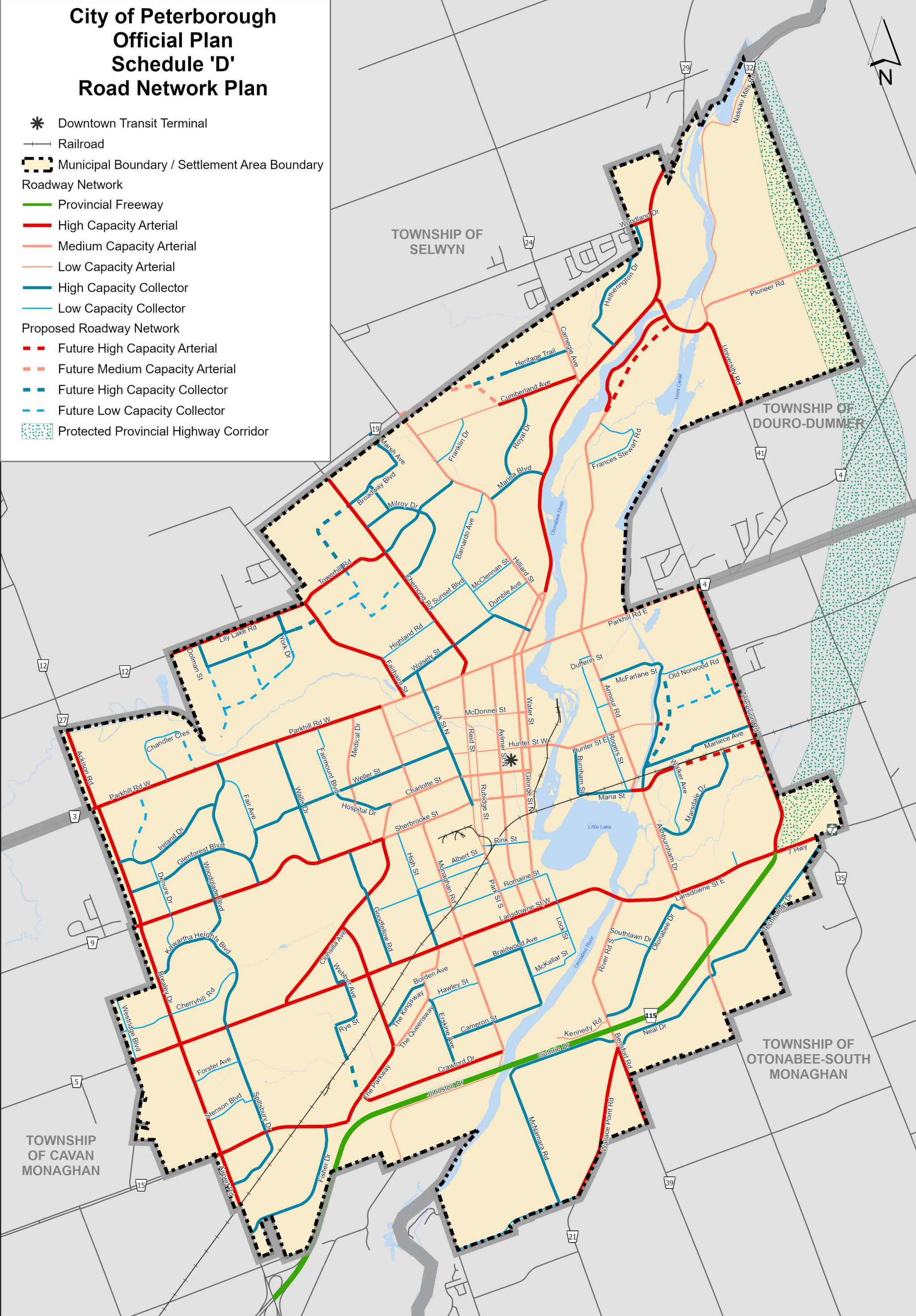


DISCLAIMER OF ALL LIABILITIES - The Corporation of the City of Peterborough, its employees, consultants and agents, make no representation or warranty concerning the accuracy, validity or fitness for use of the contents of this digital or hard copy mapfile, and disclaims all liability for any claims for damages or loss arising from their use or interpretation by any party. A mapfile does not replace a survey nor is it to be used to provide a legal description.

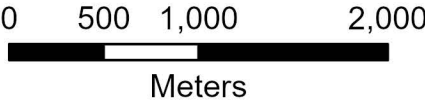


City of Peterborough
Official Plan
Schedule 'D'
Road Network Plan

- * Downtown Transit Terminal
- +— Railroad
- Municipal Boundary / Settlement Area Boundary
- Roadway Network
 - Provincial Freeway
 - High Capacity Arterial
 - Medium Capacity Arterial
 - Low Capacity Arterial
 - High Capacity Collector
 - Low Capacity Collector
- Proposed Roadway Network
 - Future High Capacity Arterial
 - Future Medium Capacity Arterial
 - Future High Capacity Collector
 - Future Low Capacity Collector
 - Protected Provincial Highway Corridor

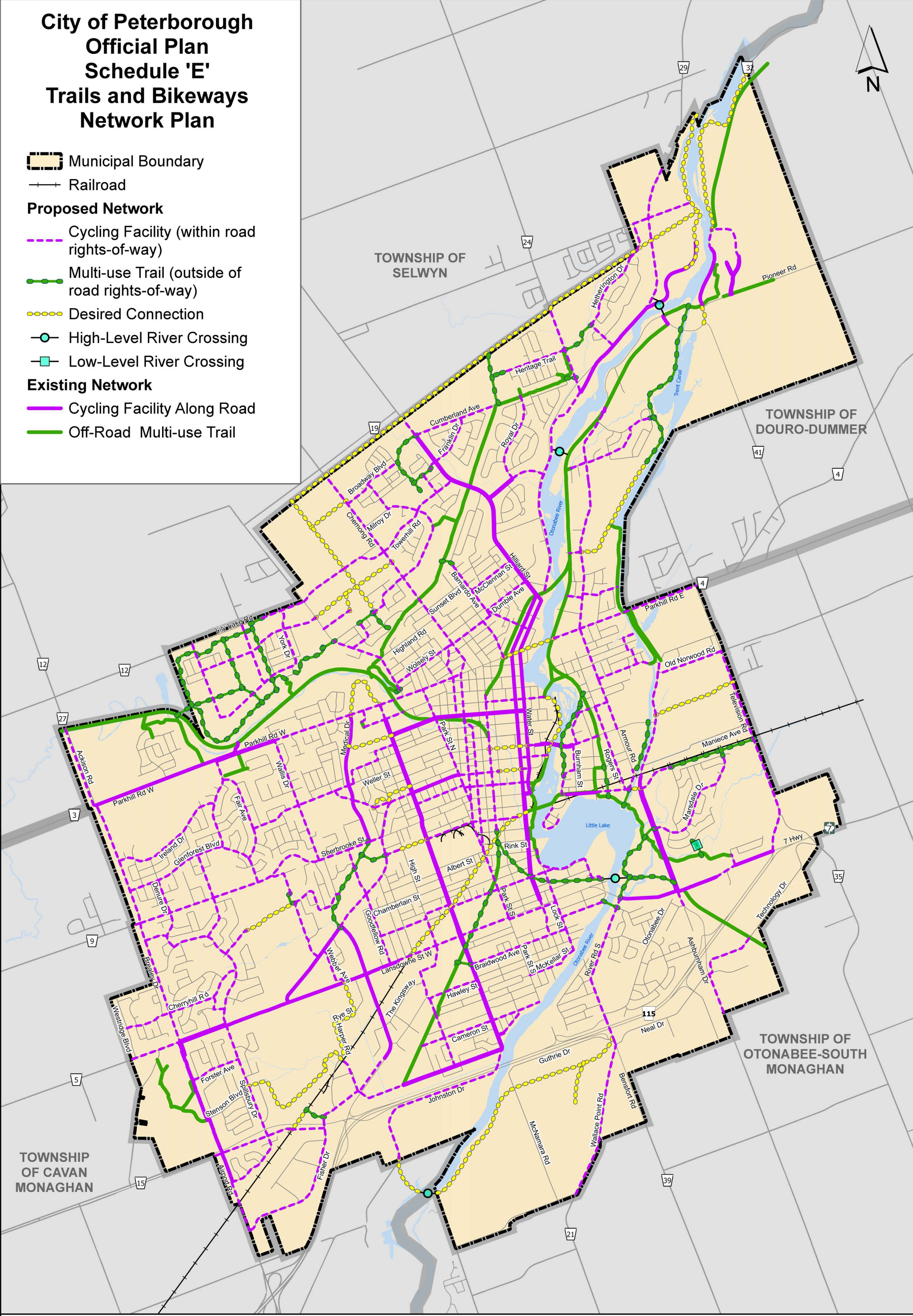


DISCLAIMER OF ALL LIABILITIES - The Corporation of the City of Peterborough, its employees, consultants and agents, make no representation or warranty concerning the accuracy, validity or fitness for use of the contents of this digital or hard copy mapfile, and disclaims all liability for any claims for damages or loss arising from their use or interpretation by any party. A mapfile does not replace a survey nor is it to be used to provide a legal description.



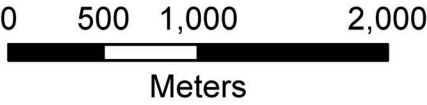
City of Peterborough Official Plan Schedule 'E' Trails and Bikeways Network Plan

- Municipal Boundary
- Railroad
- Proposed Network**
- Cycling Facility (within road rights-of-way)
- Multi-use Trail (outside of road rights-of-way)
- Desired Connection
- High-Level River Crossing
- Low-Level River Crossing
- Existing Network**
- Cycling Facility Along Road
- Off-Road Multi-use Trail



DISCLAIMER OF ALL LIABILITIES - The Corporation of the City of Peterborough, its employees, consultants and agents, make no representation or warranty concerning the accuracy, validity or fitness for use of the contents of this digital or hard copy mapfile, and disclaims all liability for any claims for damages or loss arising from their use or interpretation by any party. A mapfile does not replace a survey nor is it to be used to provide a legal description.

Provincial Approval: April 11, 2023

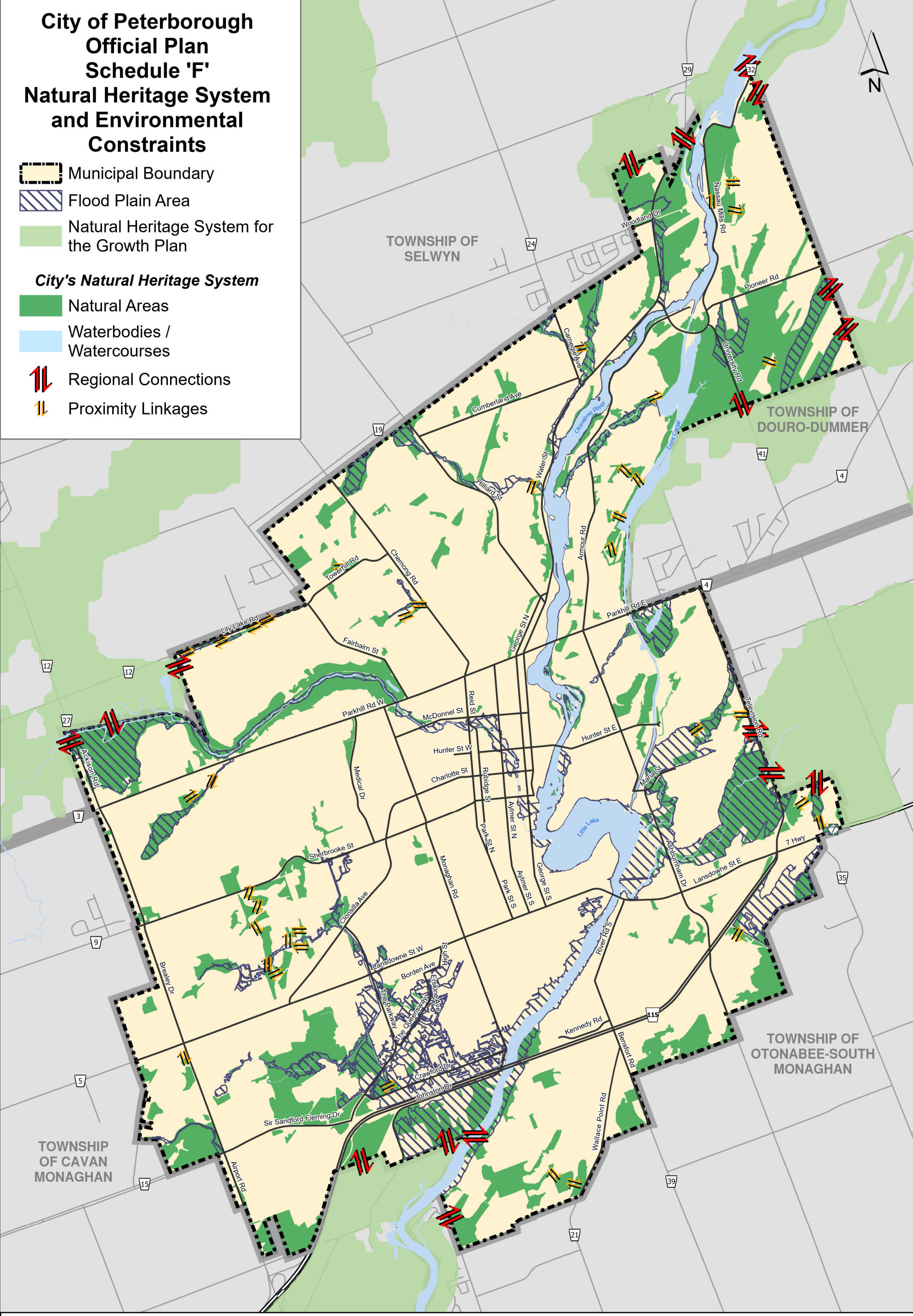


City of Peterborough
Official Plan
Schedule 'F'
Natural Heritage System
and Environmental
Constraints

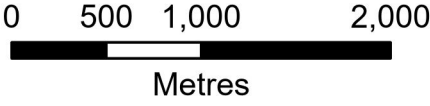
- Municipal Boundary
- Flood Plain Area
- Natural Heritage System for the Growth Plan

City's Natural Heritage System

- Natural Areas
- Waterbodies / Watercourses
- Regional Connections
- Proximity Linkages







DISCLAIMER OF ALL LIABILITIES - The Corporation of the City of Peterborough, its employees, consultants and agents, make no representation or warranty concerning the accuracy, validity or fitness for use of the contents of this digital or hard copy mapfile, and disclaims all liability for any claims for damages or loss arising from their use or interpretation by any party. A mapfile does not replace a survey nor is it to be used to provide a legal description.

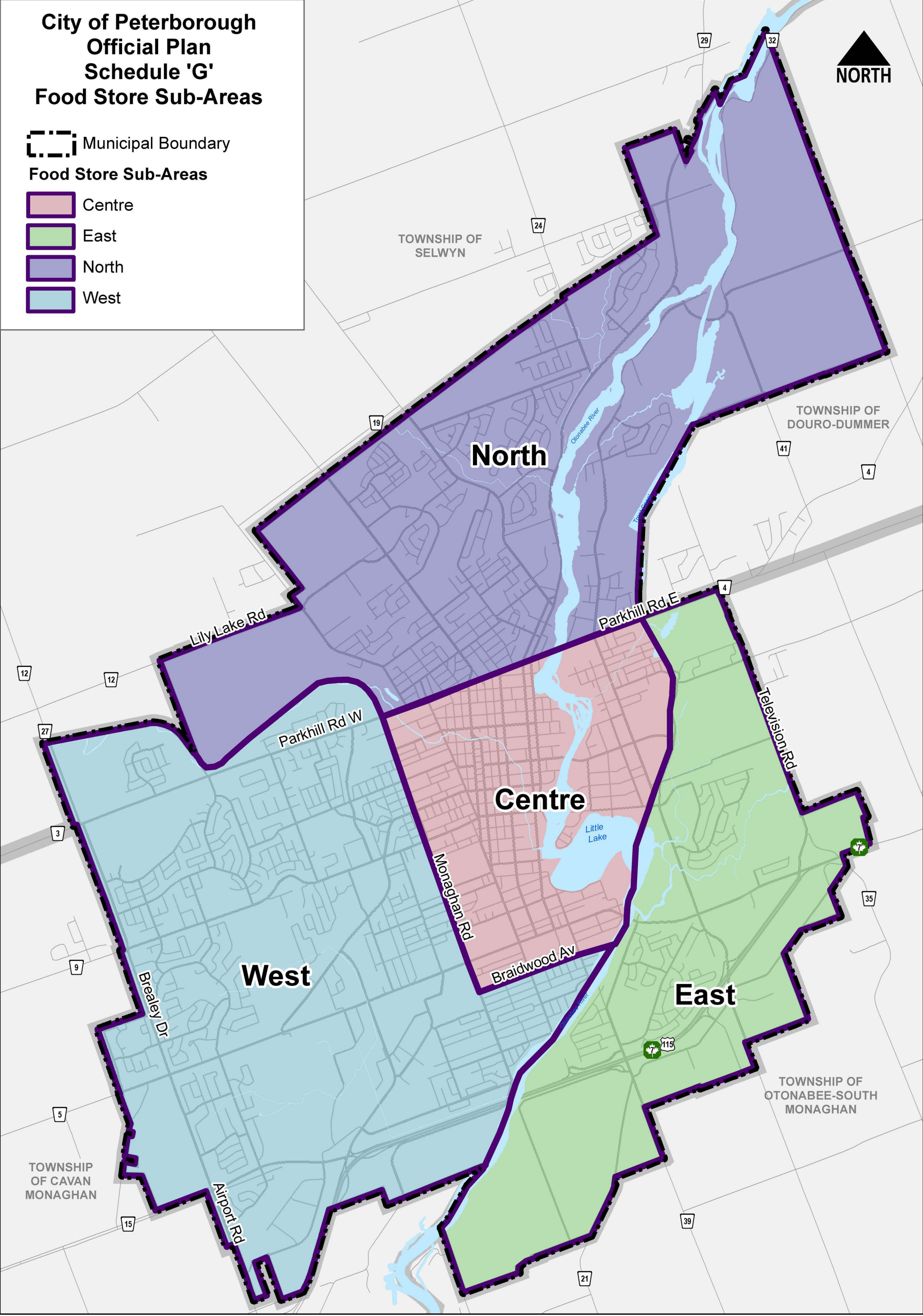


City of Peterborough
Official Plan
Schedule 'G'
Food Store Sub-Areas

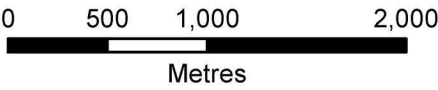
 Municipal Boundary

Food Store Sub-Areas

-  Centre
-  East
-  North
-  West










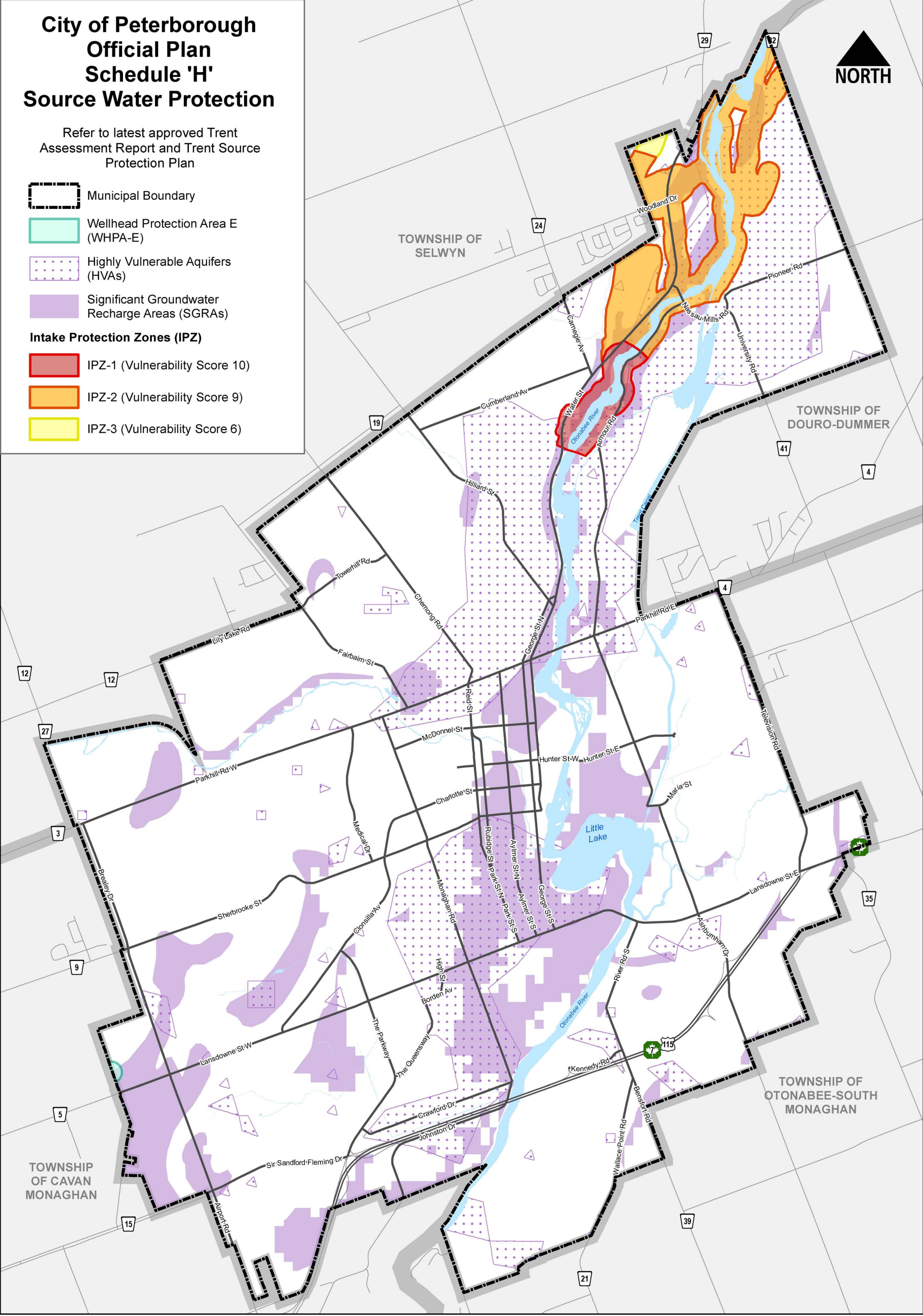
DISCLAIMER OF ALL LIABILITIES - The Corporation of the City of Peterborough, its employees, consultants and agents, make no representation or warranty concerning the accuracy, validity or fitness for use of the contents of this digital or hard copy mapfile, and disclaims all liability for any claims for damages or loss arising from their use or interpretation by any party. A mapfile does not replace a survey nor is it to be used to provide a legal description.



City of Peterborough Official Plan Schedule 'H' Source Water Protection

Refer to latest approved Trent
Assessment Report and Trent Source
Protection Plan

-  Municipal Boundary
 -  Wellhead Protection Area E (WHPA-E)
 -  Highly Vulnerable Aquifers (HVAs)
 -  Significant Groundwater Recharge Areas (SGRAs)
- Intake Protection Zones (IPZ)**
-  IPZ-1 (Vulnerability Score 10)
 -  IPZ-2 (Vulnerability Score 9)
 -  IPZ-3 (Vulnerability Score 6)



DISCLAIMER OF ALL LIABILITIES - The Corporation of the City of Peterborough, its employees, consultants and agents, make no representation or warranty concerning the accuracy, validity or fitness for use of the contents of this digital or hard copy mapfile, and disclaims all liability for any claims for damages or loss arising from their use or interpretation by any party. A mapfile does not replace a survey nor is it to be used to provide a legal description.

0 500 1,000 2,000
Metres



City of Peterborough

Schedule 'I': Road Allowance Widths

Street Name	Width of R.O.W. (metres)
Ackison Road	30
Albert Street	20
Armour Road (Maria Street to Whitaker Street)	26
Armour Road (Whitaker Street to Nassau Mills Road)	30
Ashburnham Drive	30
Aylmer Street	20
Barnardo Avenue North (Water Street to Wolsely Street)	20
Barnardo Avenue North (Wolsely Street to Hilliard Street)	26
Bensfort Road	30
Braidwood Avenue	20
Brealey Drive	30
Cameron Street	20
Carnegie Avenue	30
Chamberlain Street	20
Charlotte Street (Monaghan Road to Water Street)	20
Charlotte Street (Monaghan Road to Weller Street)	26
Chemong Road (Parkhill Road to Highland Road)	30
Chemong Road (Highland Road to City Limits)	30
Clonsilla Avenue (Charlotte Street to Parkway)	30
Clonsilla Avenue (Parkway to Lansdowne Street)	30
Crawford Drive (Monaghan Road to CNR)	26
Crawford Drive (CNR to The Queensway)	30
Cumberland Avenue (Hilliard Street to The Parkway)	26
Cumberland Avenue (Parkway to Water Street)	30
Douro Street	20
Driscoll Road	23
Dumble Avenue	20
Erskine Avenue	26
Fairmount Boulevard	23

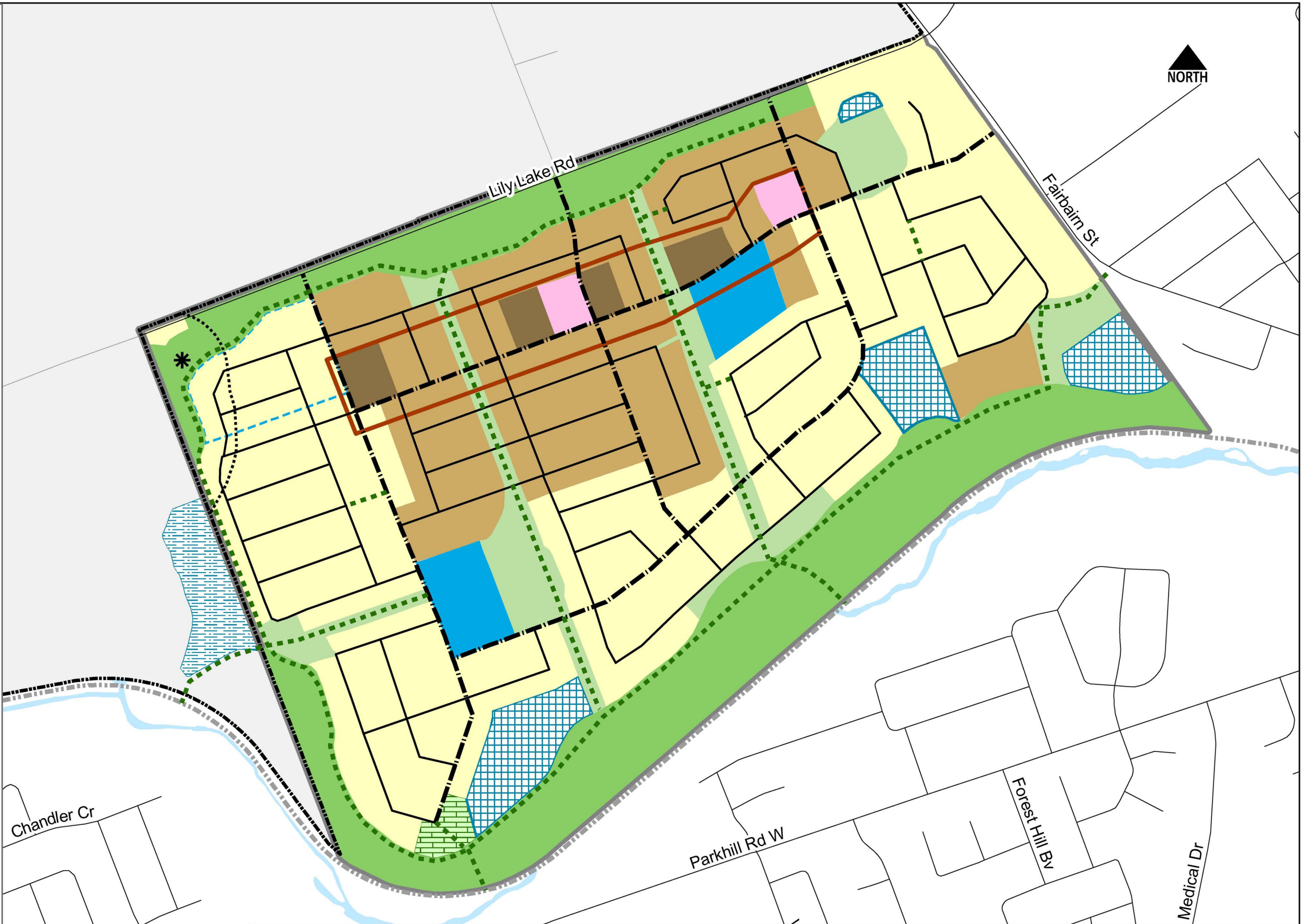
Street Name	Width of R.O.W. (metres)
Forest Hill Boulevard	23
Fairbairn Street	30
Franklin Street	20
George Street (Lansdowne Street to Sherbrooke Street)	26
George Street (Sherbrooke Street to Hilliard Street)	20
Goodfellow Road	23
Guthrie Drive	23
Harper Road	23
Hawley Street	20
High Street	20
High Street / Borden Avenue	26
Highland Road	20
Hilliard Street (Water Street to George Street)	20
Hilliard Street (George Street to Dumble Avenue)	26
Hilliard Street (Dumble Avenue to City Limits)	26
Hunter Street (Reid Street to Burnham Street)	20
Hunter Street (Burnham Street to Armour Road)	23
Hunter Street (Armour Road to Ashburnham Drive)	26
Johnston Drive	26
Lansdowne Street	36
Lily Lake Road	30
Lock Street	20
Maniece Avenue	26
Maria Street (Burnham Street to Ashburnham Drive)	26
McDonnel Street	20
McClennen Street	20
McFarlane Avenue	23
McFarlane Street	20
McKellar Street	20
McNamara Road	23
Monaghan Road	26
Nassau Mills Road (University Road to Pioneer Road)	30
Neal Drive	26

Street Name	Width of R.O.W. (metres)
Otonabee Drive	26
Park Street (Lansdowne Street to Rink Street)	26
Park Street (Sherbrooke Street to Lansdowne Street)	20
Parkhill Road	30
The Parkway (Clonsilla Avenue to the By-Pass)	36
Pioneer Road	30
The Queensway	30
Reid Street (Rink Street to Rubidge Street)	20
Reid Street (Rubidge Street to Chemong Road)	26
Rink Street	20
River Road South	30
Rogers Street	20
Romaine Street	20
Rubidge Street	20
Sherbrooke Street (Water Street to Monaghan Road)	20
Sherbrooke Street (Monaghan Road to Clonsilla Avenue)	26
Sherbrooke Street (Clonsilla Avenue to West City Limits)	30
Spillsbury Drive	26
Sunset Boulevard	20
Television Road	36
Towerhill Road (West of Chemong Road)	30
Towerhill Road (Chemong Road to Hilliard Street)	26
University Road	30
Wallace Point Road	30
Wallis Drive	26
Water Street (Sherbrooke Street to George Street)	20
Water Street (George Street to City Limits)	30
Webber Avenue	23
Weller Street (Park Street to Parkway)	20
Weller Street (Parkway to Fair Avenue)	26
Wolsely Street	26

City of Peterborough
Official Plan
Schedule 'J'
Lily Lake
Secondary Plan

Legend

- * See Section 9.1(i)
- Potential Trail/Walkway
- Land Adjacent(120m) to Provincially Significant Wetland
- - - Collector Street
- Local Street
- ▭ Neighbourhood Core
- ▭ Local Commercial
- ▭ Low Density Residential
- ▭ Medium Density Residential
- ▭ Medium-High Density Residential
- ▭ Major Open Space
- ▭ Parkland
- ▭ Infrastructure Corridor/Other Open Space
- ▭ Public Service
- - - Alternative Stormwater Management
- ▭ Preferred Stormwater Management
- ▭ Stormwater Management
- ▭ Plan Boundary
- ▭ Municipal Boundary
- Trans Canada Trail



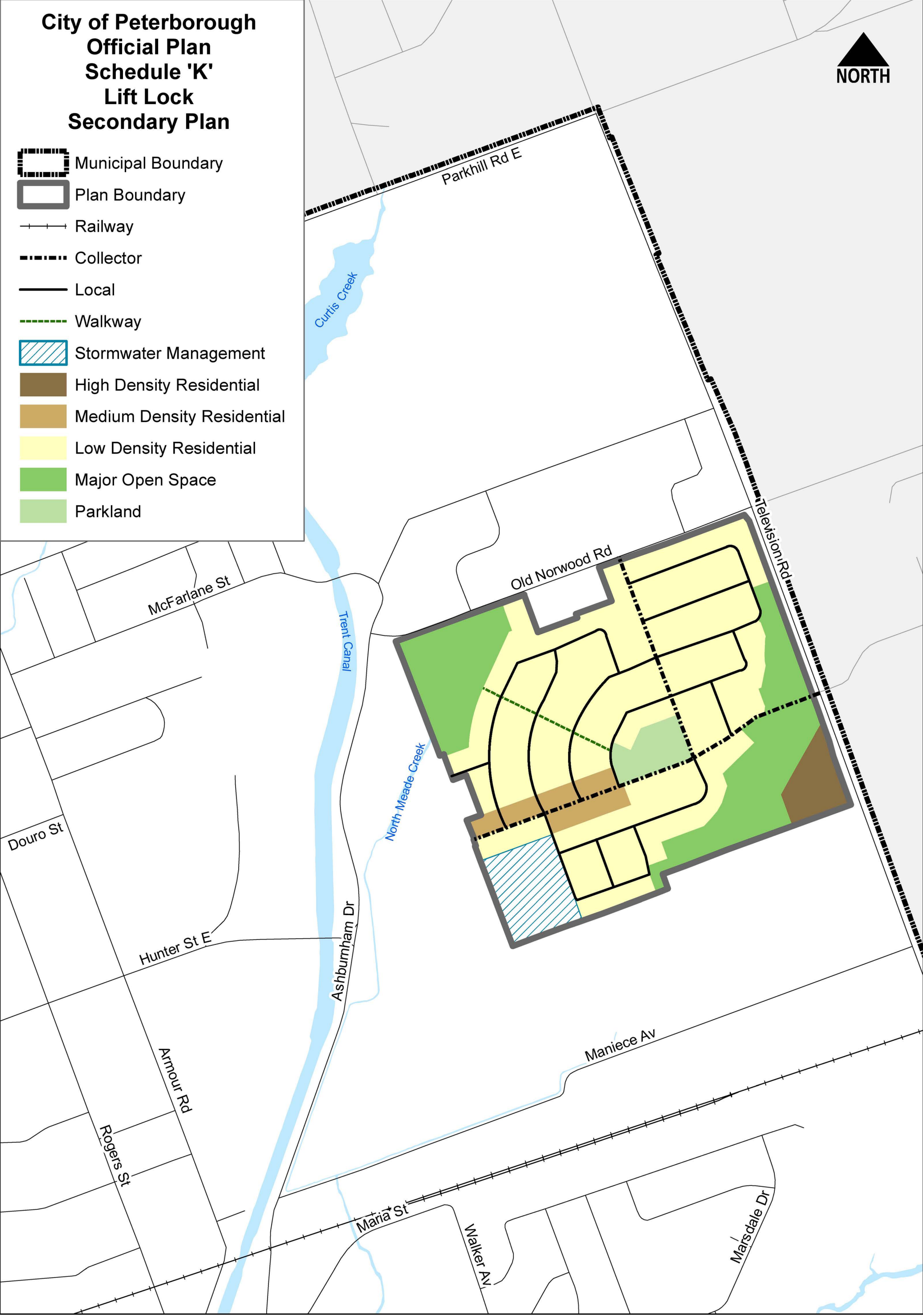
DISCLAIMER OF ALL LIABILITIES - The Corporation of the City of Peterborough, its employees, consultants and agents, make no representation or warranty concerning the accuracy, validity or fitness for use of the contents of this digital or hard copy mapfile, and disclaims all liability for any claims for damages or loss arising from their use or interpretation by any party. A mapfile does not replace a survey nor is it to be used to provide a legal description.

0 100 200 400
Metres



City of Peterborough
Official Plan
Schedule 'K'
Lift Lock
Secondary Plan

- Municipal Boundary
- Plan Boundary
- Railway
- Collector
- Local
- Walkway
- Stormwater Management
- High Density Residential
- Medium Density Residential
- Low Density Residential
- Major Open Space
- Parkland



DISCLAIMER OF ALL LIABILITIES - The Corporation of the City of Peterborough, its employees, consultants and agents, make no representation or warranty concerning the accuracy, validity or fitness for use of the contents of this digital or hard copy mapfile, and disclaims all liability for any claims for damages or loss arising from their use or interpretation by any party. A mapfile does not replace a survey nor is it to be used to provide a legal description.

