



at least

**259**

People identified were experiencing homelessness in Peterborough.

**142**

Absolute Homelessness

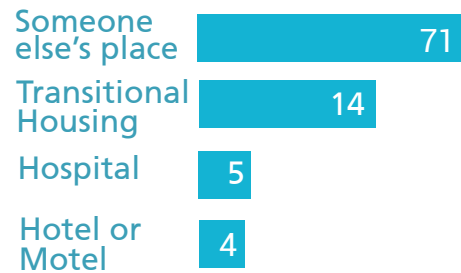
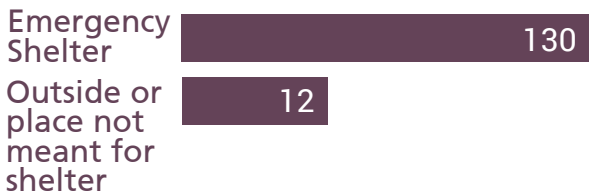
**94**

Provisionally Accommodated

**23**

Unknown Arrangement

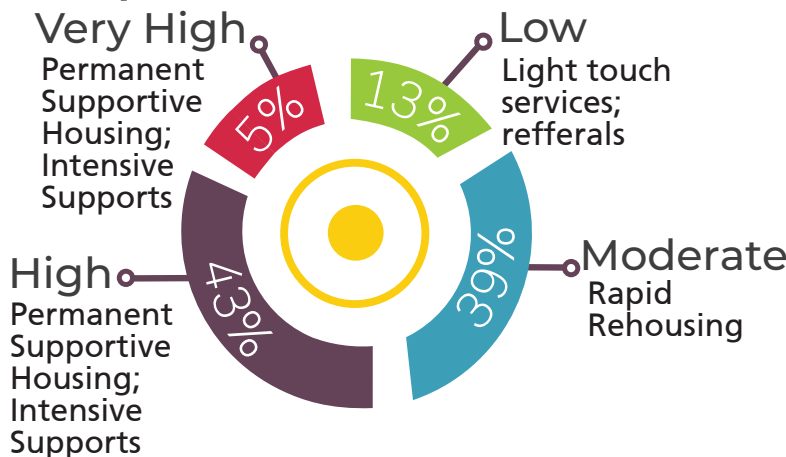
**Sleeping Arrangements**



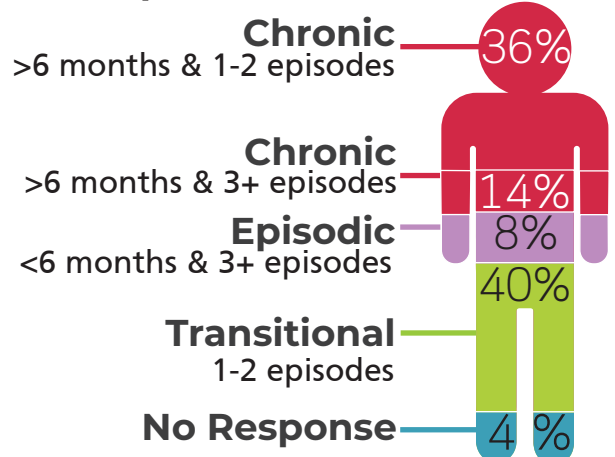
**TOP 3 REASONS FOR HOMELESSNESS**



**Acuity**



**History Of Homelessness**



**Top Barriers to Finding Housing**

**64%**  
Rents Too High

**59%**  
Low Income

**58%**  
Housing Shortage

**45%**  
Poor Housing Conditions

**29%**  
Discrimination

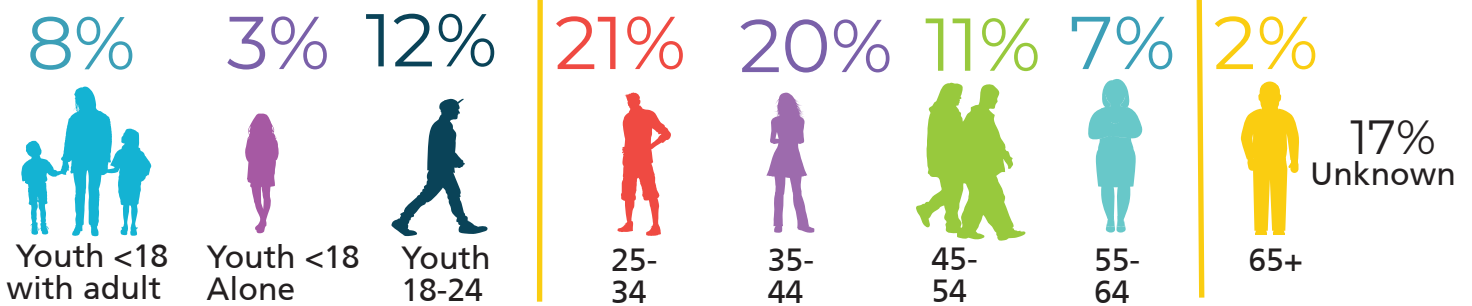
## Quick Facts

- Have a source of income > 94%
- Have employment income > 9%
- Attended post secondary school > 22%
- Have been involved in the child welfare system > 30%

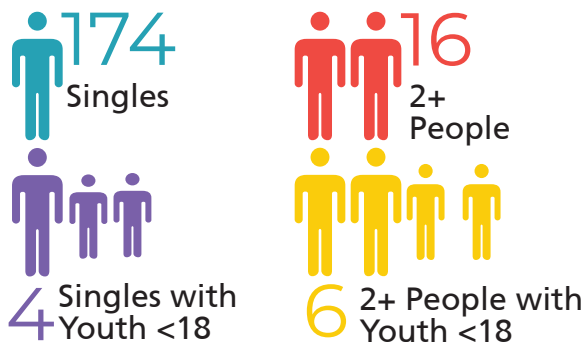
**Youth** at **58% RISK**  
of those surveyed experienced homelessness before the age of 25



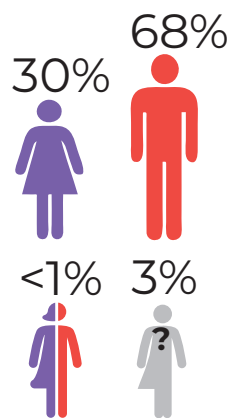
## Age of People Identified as Homeless



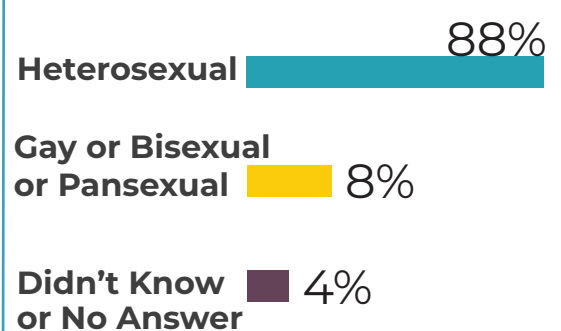
## Household Type



## Gender



## Sexual Orientation



## Between March 20-23, 2018

### Respondents

364 People Approached



200 Surveys Completed



### Volunteer Info

80+ Volunteers



400+ Volunteer Hours



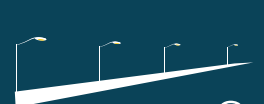
### Survey Locations



17 City



11 County



9 Street Routes