



at least

259

People identified were experiencing homelessness in Peterborough.

142

Absolute Homelessness

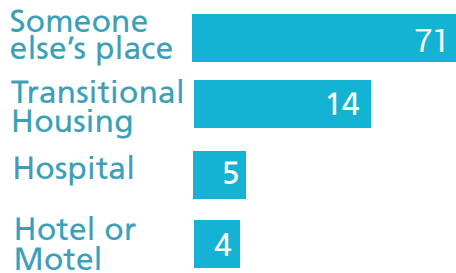
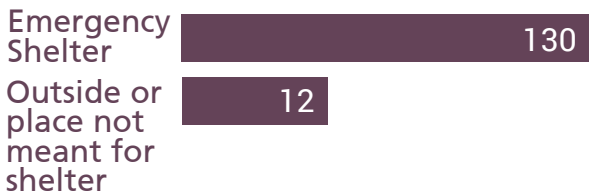
94

Provisionally Accommodated

23

Unknown Arrangement

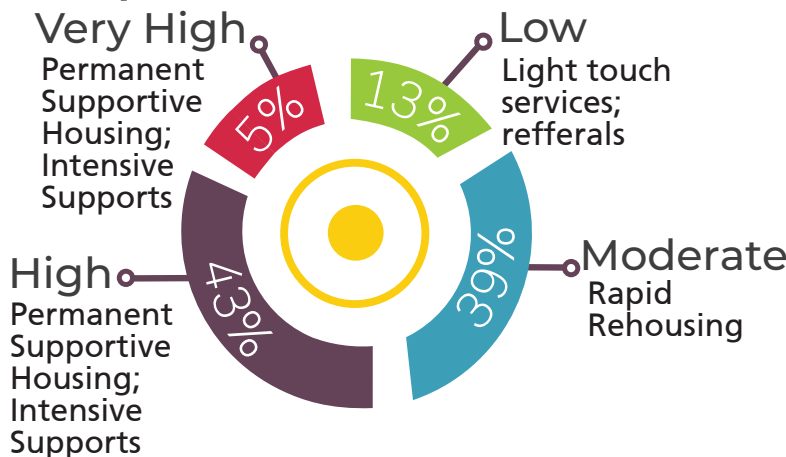
Sleeping Arrangements



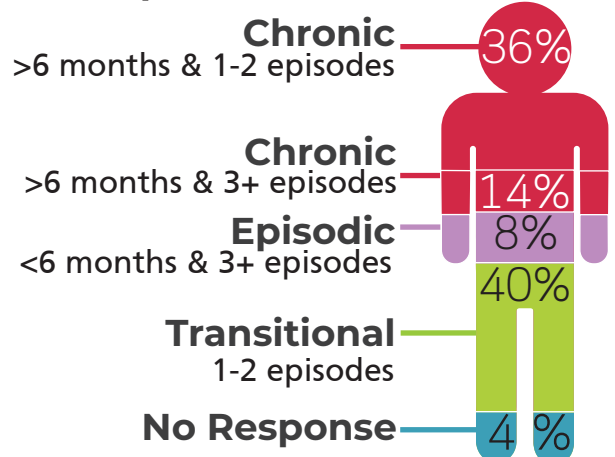
TOP 3 REASONS FOR HOMELESSNESS



Acuity



History Of Homelessness



Top Barriers to Finding Housing

64%
Rents Too High

59%
Low Income

58%
Housing Shortage

45%
Poor Housing Conditions

29%
Discrimination

Quick Facts

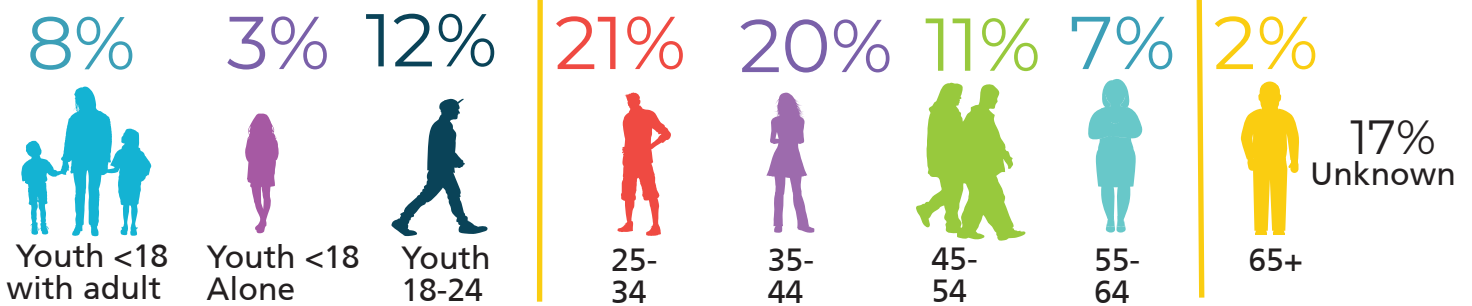
- Have a source of income > 94%
- Have employment income > 9%
- Attended post secondary school > 22%
- Have been involved in the child welfare system > 30%

Youth at **RISK**
58% of those surveyed experienced homelessness before the age of 25

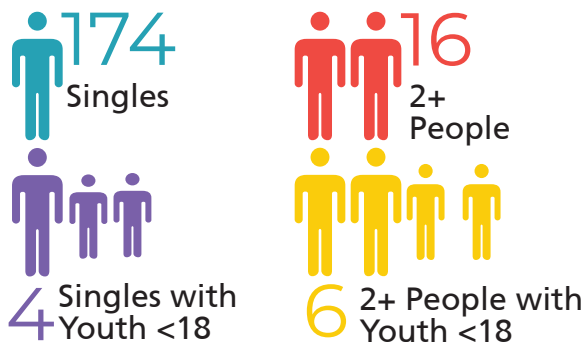
27% Identified as Indigenous or Indigenous Ancestry

9 People Surveyed are Veterans

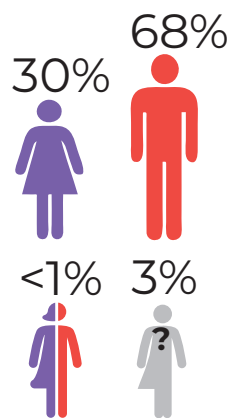
Age of People Identified as Homeless



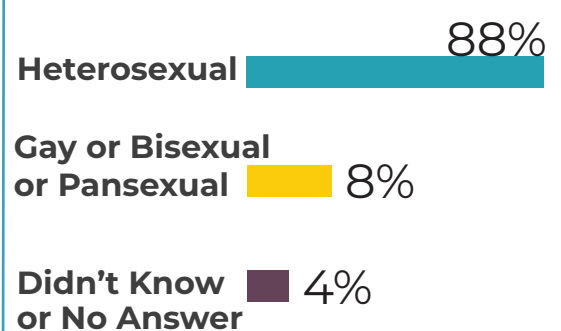
Household Type



Gender



Sexual Orientation



Between March 20-23, 2018

Respondents

364 People Approached



200 Surveys Completed



Volunteer Info

80+ Volunteers



400+ Volunteer Hours



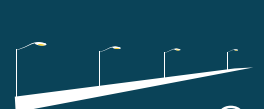
Survey Locations



17 City



11 County



9 Street Routes