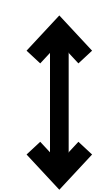


# 1 FLEXIBLE STREET MODE

(Aylmer to George Streets)

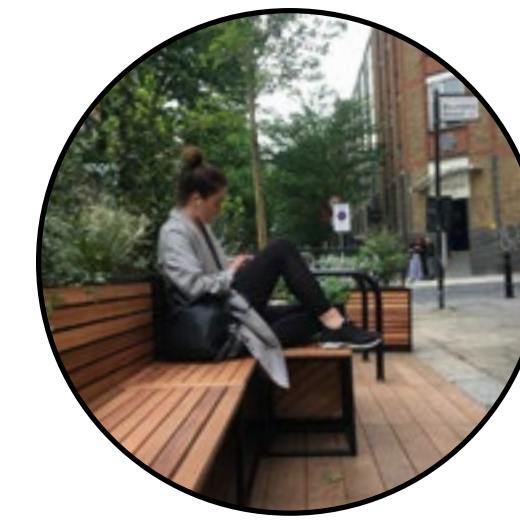
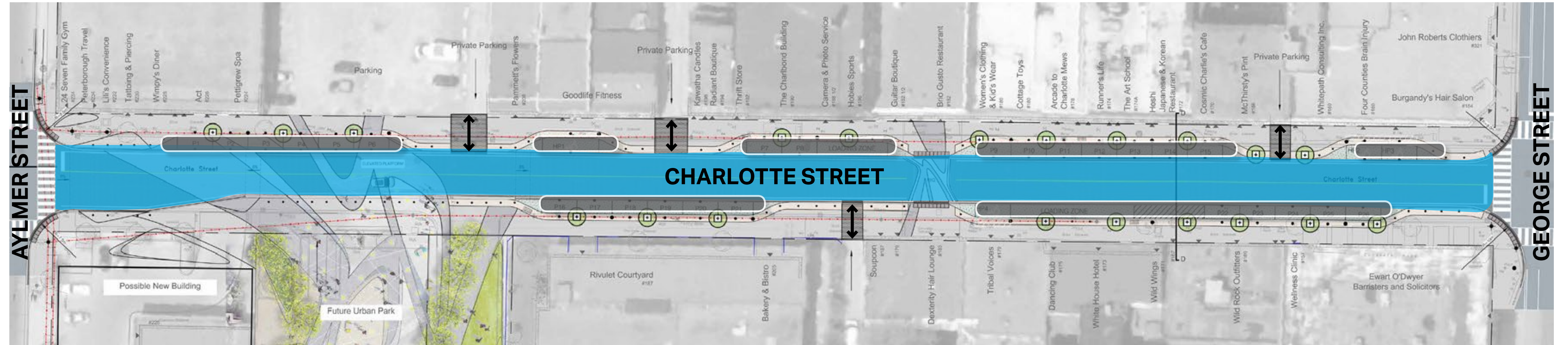
On street parking stalls to be available for parked cars, but can be easily converted if desired. If converted, on street parking stalls can be replaced with sidewalk extensions and programming space for seating, cafes, vendors, gatherings, art work, kiosks etc. Conversion requires the relocation of decorative bollards.



Parking lot access



Charlotte Street travel lanes open to through traffic.



# 2 FESTIVAL STREET MODE

(Aylmer to George Streets)

On street parking replaced with sidewalk extensions and programming space for seating, cafes, vendors, gatherings, art work, kiosks etc.



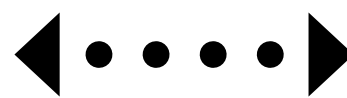
Parking lot access to be temporarily closed during festival mode.



No vehicle access to Charlotte Street during festival mode.



Charlotte Street travel lanes closed to through traffic to allow walking, cycling, shopping, gathering and festival event programming.



A clearway will be maintained for Pedestrians, emergency and service vehicles etc.

