



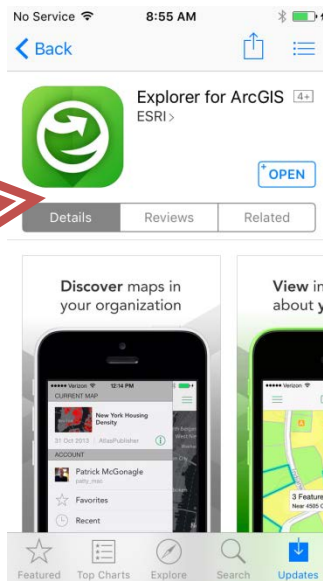
GIS Mapping for Mobile Devices (Tablets and Smartphones)

Looking for a way to view detailed maps on your mobile device?

Use the Explorer for ArcGIS App



1st
Download the Free Explorer for ArcGIS app from the App Store or Google Play




After you download the app you can create a free ArcGIS online account at <https://www.arcgis.com/home/createaccount.html> or continue without signing in. An account allows you to save and create your own maps using ArcGIS online.

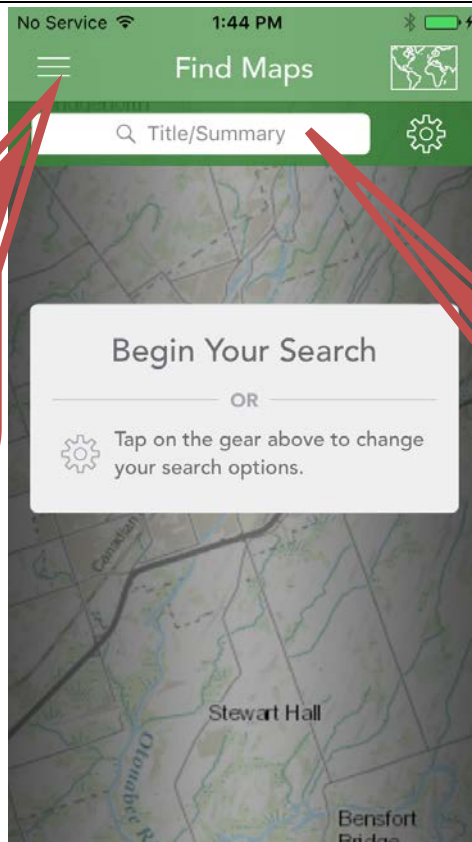


2nd
Sign in, or continue without signing in

Search for Maps

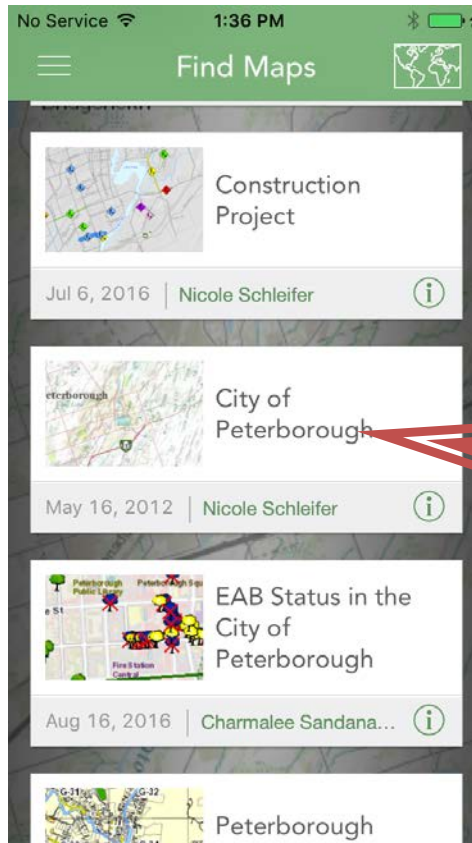
3rd

Click on the three bars  on the top left and choose Find Maps



4th

Type in a keyword i.e. 'Peterborough'



5th

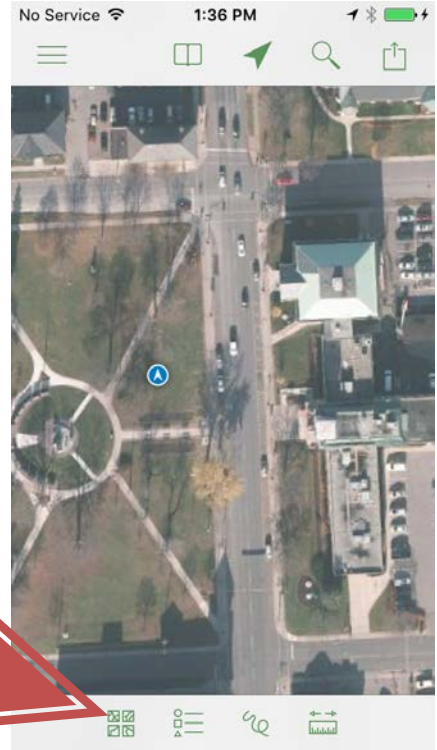
Choose a map to open

Use Map Tools



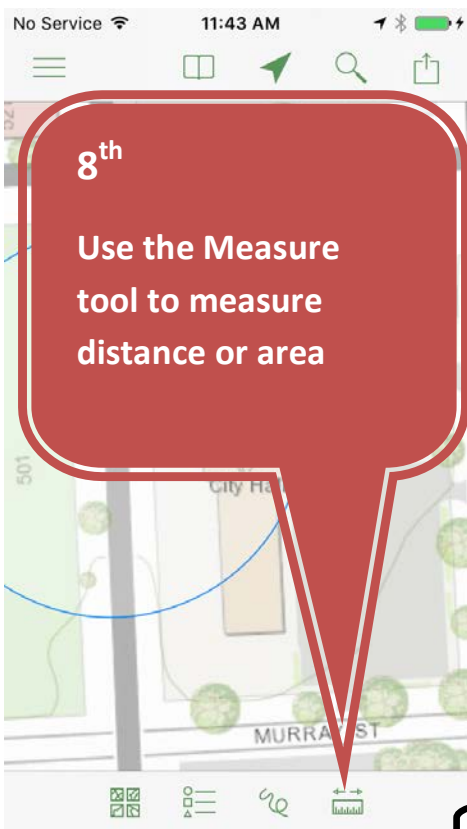
6th

Search for an address (magnifying glass) or zoom to current location (arrow tool)



7th

Use the Basemap Switcher to switch to another background map i.e. Imagery



8th

Use the Measure tool to measure distance or area



Add current GPS point to measurement

Tap to start

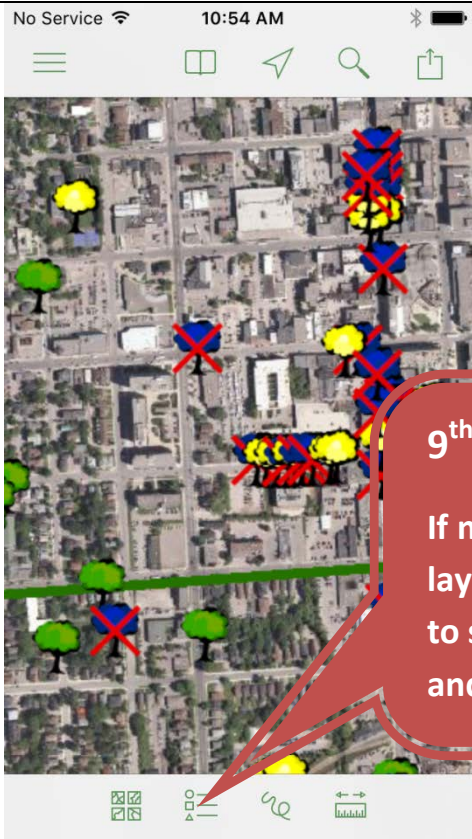
Tap to end

Click here to change unit

Distance

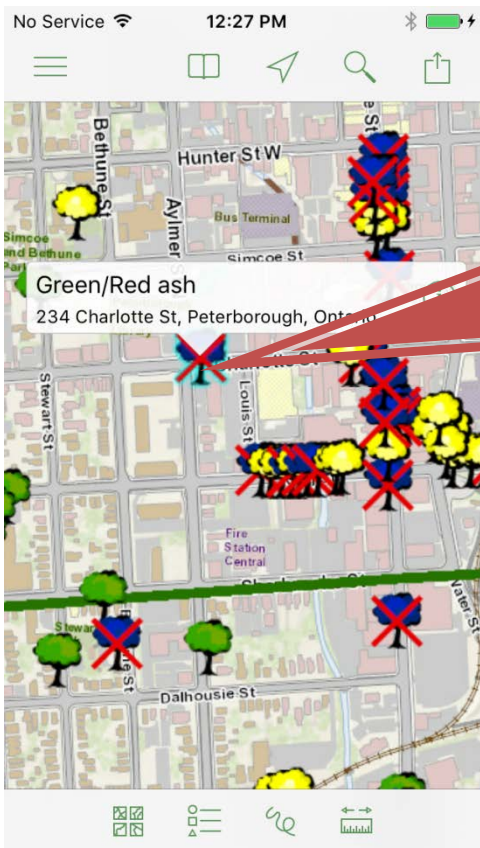
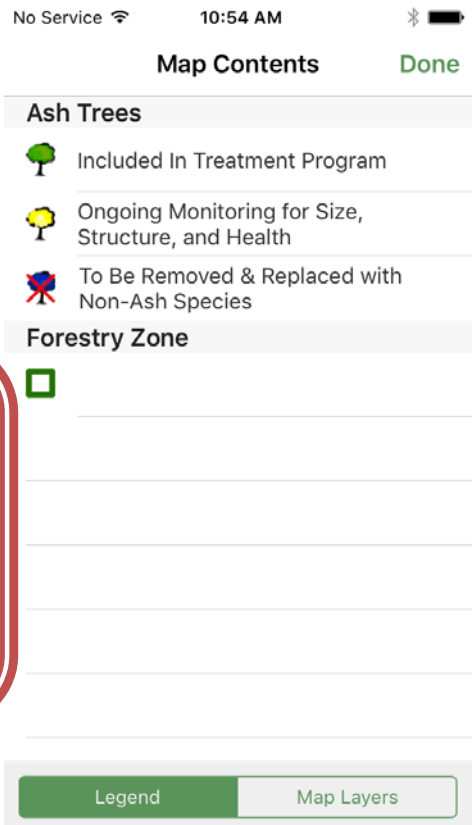
Area

Find Information about Map Features



9th

If map contains layers, click here to see map legend and layers



10th

Click on map features to get further information about them in a popup

Questions?

**Contact the City of Peterborough
Geomatics/Mapping Division at
gis@peterborough.ca**