



City of
Peterborough

**MUNICIPAL
SERVICES
DIRECTORY**

2012

SOME QUICK CONTACTS

MUNICIPAL OFFICES are located at **City Hall, 500 George Street North, Peterborough, Ontario K9H 3R9** (Unless otherwise indicated).

General inquiries should be directed through the main switchboard at 705-742-7771 or toll free at 1-855-738-3755.

Common Inquiries

- Property Tax Office - 705-742-7777 Ext 1865
- Recycling Programs - 705-742-7777 Ext 1657
- Public Works - 705-745-1386 or 705-745-1387
(Garbage and Green Waste Collection)
- Recyclables and Pick up issues
(Waste Services Inc.) - 705-742-4268
- Fire Hall - 705-745-3281
- Police – (Business Services) - 705-876-1122

General Department Inquiries

You may dial directly to a department or division by calling 705-742-7777 or toll free at 1-855-738-3755 and then entering the following extension(s):

- Mayor 1870
- City Administrative Officer 1810
- City Clerk 1820
- Corporate Services (Finance) 1860
- Property Taxes 1865
- City Solicitor 1604
- Human Resources 1875
- Community Services 1822
- Planning and Development Services 1880
- Engineering and Utility Services 1890
- Housing 1499
- Building and Construction 1892
- Recycling and Waste Management 1657
- Provincial Offences 2099

Telephone inquiries should be made directly to the department or division to ensure timely service.

Many City Departments have direct Fax lines that are noted throughout this booklet.

The City of Peterborough may be accessed on the Internet at www.peterborough.ca. Direct Email addresses are listed throughout this booklet.

TABLE OF CONTENTS

City Council 2010-2014	5
2013 Schedule of Council Meetings	6
Administrative Structure	8
Organization Chart	10
City Administration	11
Mayor's Office	11
Chief Administrative Officers Office	12
City Solicitor's Office	12
Provincial Offences Office	13
Corporate Services Department.....	13
City Clerk's Office	14
Human Resources	14
Financial Services	15
Property and Energy Services	16
Information Services	17
Customer Service and Accessibility	17
Utility Services Department.....	18
Engineering Division	18
Environmental Protection Division	18
Public Works Division	19
Transportation Division	20
Public Transit.....	20
Parking	21
Traffic Section.....	21
Transportation Demand Management	22
Waste Diversion Group	22
Flood Reduction	22
Community Services Department.....	23
Social Services	23
Employment Services	24
Community Partnerships and Children's Services	24
Arts, Culture and Heritage	25
Peterborough Museum and Archives.....	25
Peterborough Public Library	26
Art Gallery of Peterborough	27
Heritage Preservation	27
Arenas Division.....	28
Recreation Division.....	30
Sport and Wellness Centre	31
Peterborough Marina	31
Beavermead Campground.....	32
Peterborough Fire Services	33

Emergency Management	34
Planning and Development Services Department.....	35
Planning	35
Housing Division.....	36
Peterborough Municipal Airport	37
Land Information Services	37
Building Division	38
Peterborough Lakefield Community Police Service	39
Greater Peterborough Area Economic Development Corporation	40
Population.....	41
Ward Boundaries.....	42
By-laws.....	43
Dog Licensing	43

CITY COUNCIL 2010-2014

Mayor Daryl Bennett

c/o City Hall, 500 George Street North, Peterborough, Ontario K9H 3R9

Mayor's Office: 705-742-7777 Ext. 1870 - Fax: 705-748-8861

E-Mail: dbennett@peterborough.ca

Councillors

WARD 1 OTONABEE	<p>Dan McWilliams c/o City Hall, 500 George Street N. Peterborough, Ontario K9H 3R9</p>	<p>Voice Mail: 705-742-7777 Ext. 4644 Cell Phone: 705-927-8746 E-Mail: dmcwilliams@peterborough.ca</p>
	<p>Lesley Parnell c/o City Hall, 500 George Street N. Peterborough, Ontario K9H 3R9</p>	<p>Voice Mail: 705-742-7777 Ext. 4641 Home: 705-748-4713 E-Mail: lparnell@peterborough.ca</p>
WARD 2 MONAGHAN	<p>Henry Clarke 1287 Bridle Drive Peterborough, ON K9J 7J7</p>	<p>Bus: 705-743-3260, Ext. 3525 Res: 705-749-3149 Voice Mail: 705-742-7777 Ext. 4611 E-Mail: hclarke@peterborough.ca</p>
	<p>Jack Doris #303 1189 Talwood Crt Peterborough, ON K9J 7X4</p>	<p>Res: 705-745-5939 Voice Mail: 705-742-7777 Ext. 4612 E-Mail: jdoris@peterborough.ca</p>
WARD 3 TOWN	<p>Bill Juby c/o City Hall, 500 George Street N. Peterborough, Ontario K9H 3R9</p>	<p>Voice Mail: 705-742-7777 Ext. 4643 E-Mail: bjuby@peterborough.ca</p>
	<p>Dean Pappas c/o City Hall, 500 George Street N. Peterborough, ON K9H 3R9</p>	<p>Fax: 705-745-0133 (call prior to faxing) Res: 705-745-0133 Voice Mail: 705-742-7777 Ext. 4613 E-Mail: dpappas@peterborough.ca</p>
WARD 4 ASHBURNHAM	<p>Keith Riel 693 Whitaker Street, Unit 12 Peterborough, Ontario K9H 7H4</p>	<p>Voice Mail: 705-742-7777 Ext. 4640 Home: 705-743-8715 E-Mail: kriel@peterborough.ca</p>
	<p>Len Vass 400 Ashburnham Drive Peterborough, ON K9H 6X7</p>	<p>Fax: 705-743-9856 Res: 705-748-4411 Bus: 705-743-3199 Cell: 705-740-5236 Voice Mail: 705-742-7777 Ext. 4615 E-Mail: lvass@peterborough.ca</p>
WARD 5 NORTHCREST	<p>Andrew Beamer c/o City Hall, 500 George Street North, Peterborough, Ontario K9H 3R9</p>	<p>Voice Mail: 705-742-7777 Ext. 4642 Home: 705-743-8004 E-Mail: arbeamer@peterborough.ca</p>
	<p>Bob Hall 1337 Hilliard Street Peterborough, ON K9H 5S3</p>	<p>Res: 705-749-0867 Voice Mail: 705-742-7777 Ext. 4618 E-Mail: bhall@peterborough.ca</p>

**COUNCIL OF THE CITY OF PETERBOROUGH
2013 SCHEDULE OF MEETINGS
ALL MEETINGS COMMENCE AT 6:30 PM
UNLESS OTHERWISE STATED**

DATE	DAY	MEETING	LOCATION *
December 31, 2012	Break	No Meeting	
January 7, 2013	Break	No Meeting	
January 14, 2013	Break	No Meeting	
January 22, 2013	Tuesday	Planning Committee	KPRDSB Office
January 28, 2013	Monday	Committee of the Whole	KPRDSB Office
February 4, 2013	Monday	City Council	KPRDSB Office
February 11, 2013	Monday	Planning Committee	KPRDSB Office
February 19, 2013	Tuesday	Committee of the Whole	KPRDSB Office
February 25, 2013	Monday	City Council	KPRDSB Office
March 4, 2013	Monday	Planning Committee	KPRDSB Office
March 11, 2013	Monday	Committee of the Whole	KPRDSB Office
March 18, 2013	Monday	City Council	KPRDSB Office
March 25, 2013	Monday	Planning Committee	KPRDSB Office
April 2, 2013	Tuesday	Committee of the Whole	Council Chambers
April 8, 2013	Monday	City Council	Council Chambers
April 15, 2013	Monday	Planning Committee	Council Chambers
April 22, 2013	Monday	Committee of the Whole	Council Chambers
April 29, 2013	Monday	City Council	Council Chambers
May 6, 2013	Monday	Planning Committee	Council Chambers
May 13, 2013	Monday	Committee of the Whole	Council Chambers
May 21, 2013	Tuesday	City Council	Council Chambers
May 27, 2013	Monday	Planning Committee	Council Chambers
June 3, 2013	Monday	Committee of the Whole	Council Chambers
June 10, 2013	Monday	City Council	Council Chambers
June 17, 2013	Monday	Planning Committee	Council Chambers
June 24, 2013	Monday	Committee of the Whole	Council Chambers
July 2, 2013	Tuesday	City Council	Council Chambers
July 8, 2013	Break	No Meeting	
July 15, 2013	Break	No Meeting	
July 22, 2013	Monday	Planning Committee	Council Chambers
July 29, 2013	Monday	Committee of the Whole	Council Chambers
August 6, 2013	Tuesday	City Council	Council Chambers
August 12, 2013	Break	No Meeting	
August 19, 2013	Break	No Meeting	
August 26, 2013	Monday	Planning Committee	Council Chambers
September 3, 2013	Tuesday	Committee of the Whole	Council Chambers
September 9, 2013	Monday	City Council	Council Chambers
September 16, 2013	Monday	Planning Committee	Council Chambers
September 23, 2013	Monday	Committee of the Whole	Council Chambers
September 30, 2013	Monday	City Council	Council Chambers

2013 SCHEDULE OF MEETINGS (continued)

Date	Day	Meeting	Location *
October 7, 2013	Monday	Planning Committee	Council Chambers
October 21, 2013	Monday	City Council	Council Chambers
October 28, 2013	Monday	Planning Committee	Council Chambers
November 4, 2013	Monday	Budget Committee Committee of the Whole	Council Chambers
November 12, 2013	Tuesday	City Council	Council Chambers
November 18, 2013	Monday	Planning Committee	Council Chambers
November 25, 2013	Monday	Budget Committee (5:00 p.m.)	Council Chambers
November 26, 2013	Tuesday	Budget Committee (5:00 p.m.)	Council Chambers
November 27, 2013	Wednesday	Budget Committee (5:00 p.m.)	Council Chambers
November 28, 2013	Thursday	Budget Committee (5:00 p.m.)	Council Chambers
December 2, 2013	Monday	Committee of the Whole	Council Chambers
December 4, 2013	Wednesday	Budget Committee - Public Meeting (7:00 pm)	Council Chambers
December 9, 2013	Monday	City Council	Council Chambers
December 16, 2013	Break	No Meeting	
December 23, 2013	Break	No Meeting	
December 30, 2013	Break	No Meeting	

Location:

* KPRDSB Office: Kawartha Pine Ridge District School Board Office
1994 Fisher Drive, Peterborough, Ontario K9J 7A1

* Council Chambers: City Hall, 500 George Street North
Peterborough, Ontario K9H 3R9

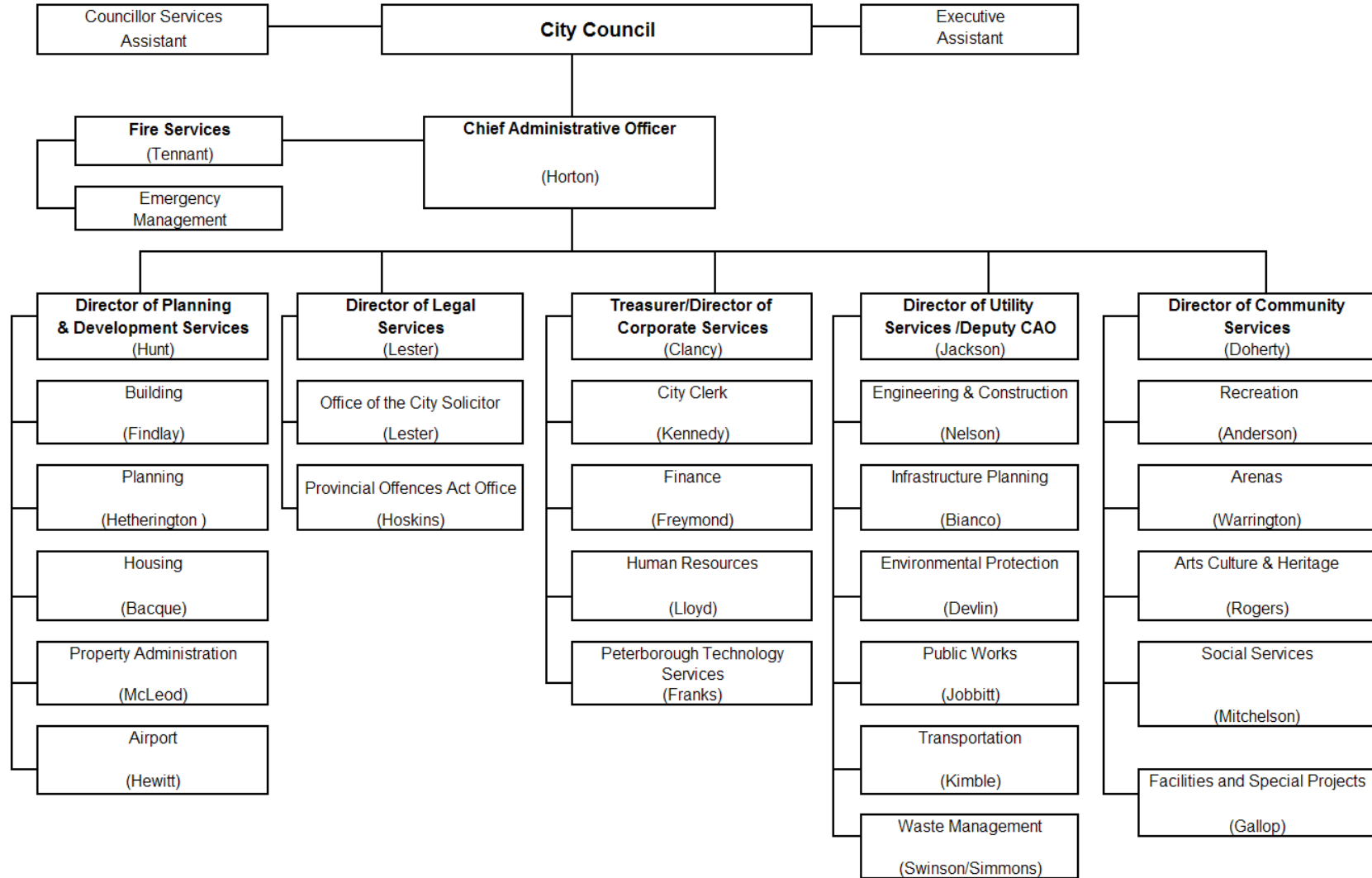
CITY OF PETERBOROUGH

Administrative Structure

DEPARTMENT	CONTACT AND TITLE	PHONE
CAO's Office	Brian Horton Chief Administrative Officer	705-742-7777 Ext 1810
	Donna Wagner Administrative Assistant	705-742-7777 Ext 1810
Corporate Services	Sandra Clancy Director/Treasurer <i>Includes accounts payable and receivable, taxation, payroll, purchasing, property, clerks and human resources</i>	705-742-7777 Ext 1863
	Bernadette Lawler Administrative Assistant	705-742-7777 Ext 1860
Planning and Development Services	Malcolm Hunt Director <i>Includes Planning, Development Engineering, Building, Housing, Airport</i>	705-742-7777 Ext 1844
	Shelagh Fry Administrative Assistant	705-742-7777 Ext 1844
Community Services	Ken Doherty Director <i>Includes Arenas, Recreation, Arts, Culture and Heritage, Marina</i>	705-742-7777 Ext 1823
	Carolyn Jobbitt Administrative Assistant	705-742-7777 Ext 1833
Utility Services	Wayne Jackson Director <i>Includes Engineering and Construction, Transportation, Parks and Public Works, Sewage Treatment, and Waste Reduction Programs</i>	705-742-7777 Ext 1894
	Donna LaBrash Administrative Assistant	705-742-7777 Ext 1890

City Solicitor's Office	Patricia Lester City Solicitor <i>Includes Solicitors Department and Provincial Offences Office</i>	705-742-7777 Ext 1603
	Jennifer Fraser Administrative Assistant	705-742-7777 Ext 2091
Fire Services	Doug Tennant Fire Chief <i>Includes Suppression Services, Prevention, Training, Communications and Emergency Management</i>	705-745-3281 Ext 221
	Pam Kelly Administrative Assistant	705-745-3284
Peterborough Lakefield Community Police	Murray Rodd Police Chief	705-876-1122 Ext 221
	Marnie Ayotte Administrative Assistant	705-876-1122 Ext 241

City of Peterborough Organization Chart



Updated as of November 27, 2012

CITY ADMINISTRATION

MUNICIPAL OFFICES are located at City Hall, 500 George Street North, Peterborough, Ontario K9H 3R9 (unless otherwise indicated). General inquiries should be directed through the main switchboard at 705-742-7771.

Additional information on the City can be obtained on the City's Internet Home Page at www.peterborough.ca

Hours of Operation: Monday through Friday, 8:30 am to 4:30 pm
(Closed Saturday, Sunday and all Statutory Holidays)

MAYOR'S OFFICE

City Council is comprised of the Mayor and ten Councillors, who hold weekly meetings on a three-week cycle of Planning Committee, Committee of the Whole and Council.

The Councillor's Services Assistant provides administrative, reception and secretarial support to the Mayor and Members of City Council.

MAYOR
Daryl Bennett

705-742-7777 Ext 1870
dbennett@peterborough.ca

EXECUTIVE ASSISTANT TO THE MAYOR
David Goyette

705-742-7777 ext 1807
dgoyette@peterborough.ca

COUNCILLORS SERVICES ASSISTANT
Heather Watson

705-742-7777 Ext 1870
hwatson@peterborough.ca

FAX: 705-748-8861

CHIEF ADMINISTRATIVE OFFICER'S OFFICE

The Chief Administrative Officer of the City is responsible to the Mayor and Members of Council for the administration, coordination and direction of all the affairs of the Corporation in accordance with the policies established by Council.

CHIEF ADMINISTRATIVE OFFICER

Brian Horton

705-742-7777 Ext 1810

bhorton@peterborough.ca

ASSISTANT TO THE CAO

Donna Wagner

705-742-7777 Ext 1810

dwagner@peterborough.ca

CORPORATE POLICY COORDINATOR

Janet Sheward

705-742-7777 Ext 1667

jsheward@peterborough.ca

FAX: 705-749-6687

CITY SOLICITOR'S OFFICE

The City Solicitor provides legal advice and general legal services to the Corporation, members of Council and various local Boards on municipally related issues, as well as representing the City as counsel and advocate before the courts and administrative tribunals.

The Office of the City Solicitor provides and maintains various legal resources on statutes and regulations as well as a library of other reference materials.

CITY SOLICITOR

Patricia Lester

705-742-7777 Ext 1603

plester@peterborough.ca

ASSOCIATE CITY SOLICITOR

Alan Barber

705-742-7777 Ext 1897

abarber@peterborough.ca

ASSISTANT TO THE CITY SOLICITOR

Jennifer Fraser

705-742-7777 Ext 1604

jfraser@peterborough.ca

LAW CLERK

Kimberley Beach

705-742-7777 Ext 1893

kbeach@peterborough.ca

FAX: 705-742-3947

PROVINCIAL OFFENCES OFFICE

The Provincial Offences Office, a division of the Legal Department, is responsible for offences, under the Provincial Offences Act, in the Peterborough County Court Services Area. The Peterborough County Court Services Area is composed of all Townships within Peterborough County as well as the City of Peterborough.

Location

99 Simcoe Street
Peterborough, Ontario K9H 2H3

General Inquiries

705-742-7777 Ext 2099

MANAGER, COURT SERVICES

Janice Hoskins

705-742-7777 Ext 2091

jhoskins@peterborough.ca

FAX: 705-743-9292

CORPORATE SERVICES DEPARTMENT

Divisions within Corporate Services:

City Clerk's Office
Human Resources
Financial Services
Property and Energy Division
Information Services
Customer Service/Accessibility

DIRECTOR, CORPORATE SERVICES

Sandra Clancy

705-742-7777 Ext 1863

sclancy@peterborough.ca

ADMINISTRATIVE ASSISTANT

Bernadette Lawler

705-742-7777 Ext 1860

blawler@peterborough.ca

FAX: 705-748-8839

CITY CLERK'S OFFICE

The City Clerk is responsible for recording, without note or comment, all resolutions, decisions and other proceedings of the Council. The Clerk is required to keep records of all by-laws and the minutes of the Council.

The City Clerk is a Statutory Officer of the Corporation and is assigned duties by various Provincial Statutes, including the Municipal Act, the Municipal Elections Act, the Planning Act, the Local Improvement Act, the Ontario Heritage Act and the Vital Statistics Act.

The duties include issuing marriage licenses, the registration of births and deaths, issuing lottery licenses, conducting civil marriage ceremonies at City Hall and processing insurance claims for the Corporation of the City of Peterborough.

The Clerk is the Returning Officer for Municipal Elections.

The City Clerk and the Mayor are the signing officers for the Corporation of the City of Peterborough.

CITY CLERK
John Kennedy

705-742-7777 Ext 1799
jkennedy@peterborough.ca

**DEPUTY CLERK/
ELECTIONS COORDINATOR**
Natalie Garnet

705-742-7777 Ext 1818
ngarnet@peterborough.ca

FAX: 705-742-4138

HUMAN RESOURCES

The Human Resources Division is responsible for providing ongoing services to all departments within the City organization, including recruitment and selection; salary administration and classification, staff training and development, succession planning, performance management, corporate health and safety programs and training and Workplace Safety and Insurance administration; employment standards; and maintenance of personnel records.

The division oversees the employee benefit programs; the development and maintenance of position descriptions; negotiates and administers all collective agreements, grievance handling and acts in an advisory capacity to all departments in the interpretation and administration of collective agreements and legislation.

DIVISION HEAD, HUMAN RESOURCES

Cathy Lloyd

705-742-7777 Ext 1814
clloyd@peterborough.ca

EMPLOYEE RELATIONS/TRAINING CO-ORDINATOR

Bob Kidd

705-742-7777 Ext 1899
bkidd@peterborough.ca

RETURN TO WORK/WELLNESS COORDINATOR

Jennifer McFarlane

705-742-7777 Ext 1803
jmcfarlane@peterborough.ca

HEALTH AND SAFETY CO-ORDINATOR

Mark Kinnear

705-742-7777 Ext 1771
mkinnear@peterborough.ca

BENEFITS OFFICER

Megan Hunt

705-742-7777 Ext 1885
mhunt@peteborough.ca

HUMAN RESOURCES ADMINISTRATIVE ASSISTANT

Melanie Denham

705-742-7777 Ext 1875
mdenham@peterborough.ca

FAX: 705-742-7021

FINANCIAL SERVICES

The Financial Services Division discharges the responsibilities and duties assigned to the Treasurer by the statutes and Council, including the collection of property taxes and other revenues, and co-ordination of the current and capital budget estimates.

City Budget

The 2012 Current and Capital Budget estimates provided for gross current expenditures of \$210.8 million, gross capital expenditures of \$51.6 million, and a 2.5% overall increase in the combined municipal, education and sewer surcharge rate.

Property Taxation and Accounts Receivable

The Tax Office within the department is responsible for the billing and collection of all property taxes for the City of Peterborough. Taxes are billed twice annually with quarterly instalments due the end of March, May, July and September. The City offers Pre-Authorized Payment Plans and payments via telephone banking as well as accepting payments through the mail or through any Canadian bank, credit union or trust company. Payments can be made in person by cash, cheque, post-dated cheque, money order, bank draft or debit card payment. Parking ticket, large article pickup ticket and accounts receivable payments are also accepted in the tax office.

**MANAGER, FINANCIAL SERVICES/
DEPUTY CITY TREASURER**
Richard Freymond

705-742-7777 Ext 1862
rfreymond@peterborough.ca

REVENUE ADMINISTRATOR
Erica Arkell

705-742-7777 Ext 1628
earkell@peterborough.ca

TAX COLLECTOR
Christine Heersink

705-742-7777 Ext 1622
cheersink@peterborough.ca

FAX: 705-748-8839

Accounting and Accounts Payable

The Financial Services Division also discharges the balance of the responsibilities and duties assigned to the Treasurer by the statutes of Council, including preparation of financial statements, maintenance of accounting records, payments to suppliers, provisions of payroll and auditing services, public sector accounting practices and asset management.

Goods and Services

The Division provides general administrative services for the City including the issuing of City Requests for Tenders, purchase of all goods and services, maintenance and management of stores inventory.

CHIEF ACCOUNTANT
Darren Hancock

705-742-7777 Ext 1624
dhancock@peterborough.ca

FAX: 705-876-4615

CITY AUDITORS: Collins Barrow Kawarthas

PROPERTY AND ENERGY SERVICES

The Property and Energy Services Division is responsible for the management and maintenance of certain City-owned property and buildings and the co-ordination of energy and conservation for all City-owned buildings.

MANAGER, PROPERTY/ENERGY
Mac MacGillivray

705-742-7777 Ext 1852
mmacgillivray@peterborough.ca

FAX: 705-748-8839

INFORMATION SERVICES

The City's Information Services Division, in conjunction with Peterborough Technology Services, is responsible for the delivery of Information Technology resources to all City departments. This includes desktop office automation resources, access to corporate applications on various technical platforms across both local and wide area networks, and links to various external resources.

V.P./DIRECTOR, TECHNOLOGY SERVICES

Larry Franks

705-748-9301 Ext 1202

lfranks@peterboroughutilities.ca

MANAGER, INFORMATION SERVICES

Jamie Hagg

705-742-7777 Ext 1618

jhagg@peterborough.ca

CUSTOMER SERVICE AND ACCESSIBILITY

The City of Peterborough is dedicated to providing excellent customer service and accessibility to all residents. The Customer Service division in partnership with City departments will work together to expand on the options available for how customers do business with the City and to improve on the overall customer experience.

CUSTOMER SERVICE COORDINATOR

Sharron Hayton

705-742-7777 Ext 1868

shayton@peterborough.ca

ACCESSIBILITY COORDINATOR

Phyllis Hodder

705-742-7777 Ext 1785

phodder@peterborough.ca

UTILITY SERVICES DEPARTMENT

Divisions within Utility Services:

Engineering/Construction
Environmental Protection
Public Works/Parks
Transportation
Waste Management/Recycling
Flood Planning

DIRECTOR, UTILITIES SERVICES AND DEPUTY CAO

Wayne H. Jackson

705-742-7777 Ext 1894

wjackson@peterborough.ca

SECRETARY TO THE DIRECTOR

Donna LaBrash

705-742-7777 Ext 1890

dlabrash@peterborough.ca

FAX: 705-876-4621

ENGINEERING DIVISION

The Engineering and Construction Division is responsible for the design and construction of all new storm and sanitary sewers, sidewalks, streets, bridges and culverts. This includes the preparation of the contract documents and the administration of the construction in the field. In addition, the Division is also responsible for the operation and maintenance of the streetlight system.

MANAGER, ENGINEERING AND CONSTRUCTION

Blair Nelson

705-742-7777 Ext 1763

bnelson@peterborough.ca

ENVIRONMENTAL PROTECTION DIVISION

The Environmental Protection Division operates the City's wastewater treatment plant (WWTP) and the 13 pumping stations and force mains used to convey sanitary sewage to the WWTP. The Division enforces the Sewer Use By-law and regulations as they pertain to the City. The Division operates an on-site laboratory which provides environmental analysis for both City operations and the public. The Division provides for the operation of one of Peterborough's major tourist attractions, the Centennial Fountain on Little Lake.

Location

425 Kennedy Road
Peterborough, Ontario

MANAGER

Patrick Devlin

705-742-7777 Ext 2624

pdevlin@peterborough.ca

ENVIRONMENTAL CLERK

Sandra Frost

705-742-7777 Ext 2621

sfrost@peterborough.ca

CHIEF OPERATOR

Phoebe Eccles

705-742-7777 Ext 2631

peccles@peterborough.ca

CHIEF ENVIRONMENTAL OFFICER

Kent Keeling

705-742-7777 Ext 2629

kkeeling@peterborough.ca

CHIEF CHEMIST

Krista Thomas

705-742-7777 Ext 2632

kthomas@peterborough.ca

FAX 705-743-0991

PUBLIC WORKS DIVISION

This Division is responsible for the day-to-day operations of the following programs and services: solid waste collection, green waste collection, large article collections, snow plowing, road and sidewalk repairs and maintenance, street cleaning, storm sewers, sanitary sewers, weed control, animal control, landfill operation, maintenance and repairs to City vehicles, road marking, and signage. It also provides public works services to homeowners, other City departments, the Peterborough Utilities Commission and other City organizations on a cost-recovery basis.

The Division is also responsible for the maintenance and improvement of urban forestry resources and to preserve where practical, existing trees on parkland and other open space municipal lands. It serves to beautify the City through the design, planting and maintenance of flowerbeds. City parks are maintained by this division for year round recreational activities.

Location

182 Townsend Street
Peterborough, Ontario

MANAGER

Brian Jobbitt

705-742-7777 Ext 2909

bjobbitt@peterborough.ca

OFFICE SUPERVISOR
Cassandra Musclow

705-742-7777 Ext 2902
cmusclo@peterborough.ca

FAX: 743-3223

TRANSPORTATION DIVISION

The Transportation Division includes Transit, Parking, Traffic and Transportation Demand Management.

Location

Transit Terminal
190 Simcoe Street
Peterborough, Ontario

MANAGER

Jim Kimble, C.E.T.

705-742-7777 Ext 1895
jkimble@peterborough.ca

FAX: 705-876-4621

PUBLIC TRANSIT

The Public Transit Section provides planning and delivery of conventional public transit and Handi-Van transit services for persons with disabilities.

Transit operations are coordinated at the Simcoe Street Terminal and the Transit section also manages the bus storage and maintenance garage on Townsend Street.

Location

Public Transit
190 Simcoe Street
Peterborough, Ontario

TRANSIT OPERATIONS MANAGER

Gary Noakes

705-742-7777 Ext 2895 or 745-0525
gnoakes@peterborough.ca

OPERATIONS SUPERVISOR

Andrew Burdett

705-742-7777 Ext 2889 or 745-0525
aburdett@peterborough.ca

OPERATIONS SUPERVISOR

Ron Sanderson

705-742-7777 Ext 2890 or 745-0525
rsanderson@peterborough.ca

OPERATIONS SUPERVISOR

Paul Fitzgerald

705-742-7777 Ext 2888 or 745-0525

pfitzgerald@peterborough.ca**HANDI-VAN SCHEDULING**

Tammy Ackerman

705-742-7777 Ext 2891 or 745-5801

tackerman@peterborough.ca**PARKING**

The Division plans and operates all municipal on-street and off-street vehicle parking including the management of the City parking garages on King and Simcoe Streets. The parking section also administers and enforces all municipal parking by-law regulations citywide.

The parking section administers an inventory which includes 574 off-street at grade spaces, 1,163 spaces in structures and 557 metered on-street spaces for a total of 2,294 parking spaces.

Location

King Street Parkade
202 King Street (west of George Street)

PARKING OPERATIONS SUPERVISOR

Dennis VanAmerongen

705-742-7777 Ext 2758

dvanamerongen@peterborough.ca**PARKING OPERATIONS ASSISTANT**

Kate Raper

705-742-7777 Ext 2762

kraper@peterborough.ca**TRAFFIC SECTION**

The Provision of Traffic Engineering Services and Adult Crossing Guard offers services for the City including the operation and maintenance of traffic signals, signs and pavement markings. The traffic section also provides special project service for transportation planning exercises, construction detours and community events.

TRANSPORTATION SERVICES COORDINATOR

Peter Malin

705-742-7777 Ext 1846

pmalin@peterborough.ca

TRANSPORTATION DEMAND MANAGEMENT

The role of Transportation Demand Management (TDM) Planning is to promote and facilitate walking, cycling, public transit and carpooling as modes of transportation. The purpose of TDM initiatives is to reduce demand on road infrastructure thereby reducing road congestion, minimizing road capital expenditures, improving air quality, increasing a sense of community and improving overall health.

Many of the programs are a joint effort of the City of Peterborough, Peterborough Green-Up and the Peterborough County/City Health Unit.

TRANSPORTATION DEMAND MANAGEMENT PLANNER 705-742-7777 Ext 1485
Susan Sauve ssauve@peterborough.ca

WASTE DIVERSION GROUP

Waste Management develops strategies and administers programs, which divert solid and hazardous wastes from the landfill. Examples of such programs include blue box and apartment recycling, home composting, the household hazardous waste depot, and green waste collection and central composting. Educating the general public about these programs and increasing their level of participation is a large component of this group's job. This group also coordinates landfill activities.

MANAGER, WASTE DIVERSION
Virginia Swinson

705-742-7777 Ext 1725
vswinson@peterborough.ca

WASTE RECYCLING GROUP ASSISTANT
Karen Meekin

705-742-7777 Ext 1657
kmeekin@peterborough.ca

FAX: 705-876-4621

FLOOD REDUCTION

The flood reduction program consists of the short and long term actions the City of Peterborough is taking based on the Flood Reduction Master Plan. The Flood Reduction Master Plan was prepared by UMA Engineering Ltd. (now known as AECOM Ltd.) following the July 2004 flood event.

MANAGER, FLOOD REDUCTION PROJECT
Dan Ward

705-742-7777 Ext 1484
dward@peterborough.ca

FAX: 705-876-4621

COMMUNITY SERVICES DEPARTMENT

The Community Services Department is responsible for the Social Services Division, Arts, Culture and Heritage Division which includes the Peterborough Museum and Archives, the Public Library, the Art Gallery as well as the Arenas Division, the Peterborough Sport and Wellness Centre and Recreation Division including the Marina and Beavermead Park.

DIRECTOR, COMMUNITY SERVICES

Ken Doherty

705-742-7777 Ext 1823

kdoherly@peterborough.ca

ADMINISTRATIVE ASSISTANT TO THE DIRECTOR

Carolyn Jobbitt

705-742-7777 Ext 1822

cjobbitt@peterborough.ca

FAX: 705-748-8824

SOCIAL SERVICES

The Social Services Division provides financial assistance to persons in need; employment counselling and placement; children's services; homemakers; family support program, and other municipal support services. All services are subject to eligibility and require City and County of Peterborough residency.

Location

178 Charlotte St (in the Charlotte Mews)
P.O. Box 4138
Peterborough Ontario K9J 2T8

General Inquiries

705-748-8830

After Hours Emergency call

705-740-6222

MANAGER, SOCIAL SERVICES

Linda Mitchelson

705-742-7777 Ext 3770

lmitchelson@peterborough.ca

ADMINISTRATIVE ASSISTANT TO THE MANAGER

Laurie Horton

705-748-8830 Ext 3821

lhorton@peterborough.ca

Ontario Works

The Division provides employment and financial assistance to persons in need as defined under the Ontario Works Assistance Act. Benefits include dental, drugs, optical and other health care needs. These services are available based on eligibility to those living in the City and County of Peterborough.

To apply for Ontario Works call 705-748-8830 or apply on-line at www.ontario.ca/socialassistance.

Hostel Services

The Division arranges purchase of service contracts for per diem and base funding for beds at Rubidge Retirement Residence, Brock Mission, Youth Emergency Shelter and Cameron House.

Discretionary Benefits

The benefits are for assistance with extra needs such as adult dental and adult vision care to eligible persons.

Homemakers

Funding for homemaking services for eligible persons to support their continued living in their own residence.

EMPLOYMENT SERVICES

Employment Services assists Ontario Works clients by supporting their participation in a job search, training or education program and through the Community Placement and Employment Placement programs. Financial support may also be available.

Location

178 Charlotte Street (in the Charlotte Mews)
Peterborough, ON
705-742-1105

EMPLOYMENT SERVICES PROGRAM MANAGER

Mike Gannon

705-748-8830 Ext 3877

mgannon@peterborough.ca

FAX: 705-748-8858

COMMUNITY PARTNERSHIPS AND CHILDREN'S SERVICES

The Community Partnerships and Family Services Office for the City and County of Peterborough provides financial assistance for child care to eligible families who are working, attending school or have been referred for care from a child welfare agency. For Ontario Works clients, our Child Care Assessment Officers, in consultation with yourself and your caseworker, can also provide some assistance for some job search requirements, Community Placements, the Self-Employment Program and the Employment Placement Program.

MANAGER, CHILDREN'S SERVICES

Sandra Robinson

705-742-7777 Ext 3495

srobinson@peterborough.ca

FAX: 705-748-8858

ARTS, CULTURE AND HERITAGE

The Arts, Culture and Heritage Division preserves, presents, and promotes the arts, culture, and heritage of Peterborough by:

- Providing and coordinating municipal cultural facilities
- Guiding and supporting community projects and celebrations
- Encouraging communication, cooperation and coordination among organizations
- Recognizing initiative and excellence

The Arts, Culture and Heritage Board is comprised of members of City Council, representatives of umbrella and/or stakeholder organizations, and concerned citizens. The Board is appointed by Council to assist in the governance of the Division/ Peterborough Museum & Archives; and to advise Council on arts, cultural and heritage matters.

Arts, Culture and Heritage Division Office

Peterborough Public Library
345 Aylmer St. N.
Peterborough Ontario K9H 3V7

DIVISION MANAGER

Becky Rogers

705-742-7777 Ext 2380

brogers@peterborough.ca

FAX: 705-745-8958

PETERBOROUGH MUSEUM AND ARCHIVES

The Museum is governed by the Arts, Culture and Heritage Board, and appointed by City Council. The museum holds a multi-million dollar collection of over 25,000 artifacts and natural history specimens relating to the history of the Peterborough area. The archives collection includes thousands of lineal feet of documents and manuscripts including the original Peter Robinson papers, assessment rolls, over 200 works of art, 6,000 photographs, maps and books.

Two galleries house permanent exhibits reflecting the community's unique heritage. Present themes include Early Settlement and Victorian Peterborough. Another gallery holds temporary exhibitions from other museums, galleries and community groups to reflect a local theme. These change every 6 - 8 weeks.

Museum staff and volunteers provide educational tours of both permanent and temporary exhibitions to an average of 130 school groups comprised of approximately 3,500 students. The museum also organizes approximately 100 programs and special events a year with an average audience of 10,000.

The museum is open 7 days per week year around and attracts an annual audience of over 3,500 per year. The museum recently formed a unique partnership with the Friends of the Trent Severn Waterway to take over the museum's gift shop. In addition to serving as a campus for Fleming's Museum Management and Curatorship Program, the museum also rents space to many local organizations.

Location

Peterborough Museum and Archives
300 Hunter Street East
Peterborough, Ontario K9J 6Y5

General Inquiries

705-742-7777 Ext 2470

MUSEUM DIRECTOR

Susan Neale

705-742-7777 Ext 2471
sneale@peterborough.ca

FAX: 705-743-2614

PETERBOROUGH PUBLIC LIBRARY

The Library is governed by the Peterborough Public Library Board and has three supporting organizations: the Peterborough Library Foundation, the Friends of the Library and the DelaFosse Friends. The Library operates two branches: the Main branch (downtown) and the DelaFosse branch (south end).

The library provides adult information services to help adult patrons access the library's resources including the reference collection, microfilm and microfiche collections, and the Peterborough Collection.

Children's Services assists in collection development and offers programs specifically for children. With funding from Kiwanis, the Children's department also conducts tours and school programs.

Location

345 Aylmer Street North
Peterborough, Ontario K9H 3V7

General Inquiries

705-745-5382

MANAGER

Becky Rogers

705-742-7777 Ext 2380
brogers@peterborough.ca

HEAD LIBRARIAN
Betty-Kay Murray

705-742-7777 Ext 2370
bmurray@peterborough.ca

FAX 705-745-8958

ART GALLERY OF PETERBOROUGH

The Art Gallery of Peterborough (AGP) features artists from the Peterborough area and across Canada. The AGP cares for a unique collection of historical and contemporary art and presents changing exhibits of the art of our times. The programs offer studio workshops, tours, art classes, and lectures for all ages. Services include: The AGP Gift Shop, Art Rental and Sales, and a Visitors' Lounge. An active volunteer program assists the AGP.

For further information on the Gallery's hours of service and current programs visit their website at: <http://www.agp.on.ca> or call them at the General Inquiries phone number noted below.

Art Gallery of Peterborough
250 Crescent Street
Peterborough, Ontario K9J 2G1

General Inquiries

705-743-9179

ART GALLERY DIRECTOR
Celeste Scopelites

705-742-7777 Ext 2027
cscopelites@peterborough.ca

CURATOR
Carla Garnet

705-742-7777 Ext 2023
cgarnet@peterborough.ca

FAX: 705-743-8168

HERITAGE PRESERVATION

The Heritage Preservation Office (HPO) is charged with designing and administering programs relating to the preservation of historic places in the City including structures, landscapes and archaeological sites. The HPO also provides advice to Council and liaises with staff on a range of issues relating to matters of built heritage.

Programs include:

- Heritage Property Tax Relief Program which provides a property tax reduction to owners of designated heritage properties
- Preparation of Heritage Designation briefs and the administration of over 100 heritage properties in the City

- Education and public awareness for heritage through guest lectures, conference presentations and publications
- Administering federal and provincial incentive and recognition programs on behalf of the City
- Coordinating archaeological services for all City Departments.

HERITAGE PRESERVATION OFFICER

Erik Hanson

705-742-7777 Ext 1489

ehanson@peterborough.ca

HERITAGE RESEARCHER

Jennifer Patterson

705-742-7777 Ext 1827

jpatterson@peterborough.ca

ARENAS DIVISION

MANAGER, ARENAS

Sue Warrington

705-742-7777 Ext 2504

swarrington@peterborough.ca

ASSISTANT MANAGER, OPERATIONS

John Preston

705-742-7777 Ext 2402

jpreston@peterborough.ca

ASSISTANT MANAGER, ADMINISTRATION

Chris Gould

705-742-7777 Ext 2503

cgould@peterborough.ca

Memorial Centre

The Memorial Centre was built in 1956 and refurbished in 2003, adding 24 luxury box suites, improved concessions, a licensed restaurant, scoreboard, and air conditioning. In 2005, a new full video scoreboard was also added. The ice surface is 85 feet x 190 feet. The seating capacity is 4,329 including the grey seats and an additional 1,000 standing. The maximum capacity is 5,329. There are 400 parking spaces available. The main floor of the building is fully accessible. The Memorial Centre is the home to the Peterborough and District Sports Hall of Fame, the Peterborough Figure Skating Club and the Peterborough Petes Head office.

Location

151 Lansdowne Street W.
Peterborough, ON K9J 1Y4

MANAGER

Sue Warrington

705-742-7777 Ext 2504

swarrington@peterborough.ca

FAX 705-743-2196

Evinrude Centre

The Evinrude twin pad arena was built in 1995-96. The two ice surfaces are 85 feet x 200 feet. There is seating on the Atom Liftlock Pad for 702 people and on the IGA pad there is bench style seating for approximately 300 people. The multipurpose room is 5,011 square feet and is booked for many recreational and social functions. The lobby and service areas are 6,000 square feet. The arena also has concessions, a fully equipped kitchen, tuck shop, sport shop and a video games arcade. There are 426 parking spaces available. The arena is fully accessible.

Location

911 Monaghan Road
Peterborough, Ontario K9J 5K5

EVINRUDE FOREMAN

Chris Sharp
FAX 705-876-9263

705-742-7777 Ext 2401
csharp@peterborough.ca

Kinsmen Civic Centre

The Kinsmen Civic Centre has two ice surfaces measuring 85 feet x 185 feet. The arena has eight change rooms and a lower lobby area. There is an upstairs viewing area from which both ice surfaces can be observed. Ice is in the Kinsmen arena for 9 months a year. The main users are hockey, lacrosse and ball hockey players. The upstairs area is not accessible. Approximately 500,000 to 600,000 spectators pass through the Kinsmen doors each year. The arena has 236 parking spaces.

Location

777 Sherbrooke Street
Peterborough, Ontario K9J 2R2

KINSMEN FOREMAN

Chris Fitzgerald

FAX 705-742-3078

705-742-5454
cfitzgerald@peterborough.ca

Northcrest Arena

The Northcrest Arena was built in 1967 and is a single pad ice surface. The floor surface is 80 feet x 180 feet. The arena also has a warm room area 20 feet x 80 feet, which can be booked for socials. Approximately 25,000 users go through the Northcrest doors in a single year. Ice is in the arena from September to April each year. The floor space is mainly used by lacrosse, ball hockey and special events. It is also home to the Northcrest skating school.

Location

100 Marina Boulevard
Peterborough, Ontario K9H 6M6

SEASONAL NORTHCREST FOREMAN

Chris Fitzgerald

705-745-0042

RECREATION DIVISION

Recreation Services are provided to citizens of Peterborough through a variety of programs and services. These include seven instructional sport camps, lifeguard supervision at two municipal beaches and six wading pools, play programs at eight neighbourhood parks, day camp activities and swimming lessons. The Recreation Division coordinates the activities of the Peterborough Youth Commission that include a youth website (www.ptboyouth.com), Youth Council, and numerous active subcommittees. The Division has also developed decentralized youth centres in neighbourhoods in Peterborough geared to youth 13 years of age and over.

The Recreation Division provides funding and advice to two community senior recreation organizations, Activity Haven Senior Centre and Mapleridge Senior's Recreation Centre. This funding assists to support the programs and services offered by these major providers of older adult recreation activities.

The Recreation Division also manages community centres. Staff oversee the management of tenants and facility operations at the Queen Alexandra Community Centre and Millennium Boathouse on the Otonabee River Trail.

In the area of outdoor sport fields, the Recreation Division ensures the maximum, sustainable use of outdoor facilities for athletic and community activities. This includes permitting over 110 fields in 40 (plus) locations to accommodate both community and school participation. Annually, in league and tournament play, over 2,000 teams play with 30,000 participants.

RECREATION COORDINATOR

Rob Anderson

705-742-7777 Ext 1833
randerson@peterborough.ca

SECRETARY

Cari-Anne Sterling

705-742-7777 Ext. 1827
csterling@peterborough.ca

QUEEN ALEXANDRA CENTRE

Stephanie Fraser

705-742-7777 Ext 1826
sfraser@peterborough.ca

FAX 705-748-8824

PETERBOROUGH SPORT AND WELLNESS CENTRE

The Peterborough Sport & Wellness Centre opened in June 2005 and offers over 500 programs each week, in addition to the drop-in activities at the centre. The centre has the area's most unique aquatic centre that includes a leisure pool and therapy pool with wheelchair access. Adjacent to the pool and fitness centre are three large change rooms for men, women as well as a family/special needs change room to accommodate the needs of other users to the facility. In total, 7 change rooms are available at the centre. Also included are a fitness centre with a 100 metre indoor track, workout rooms, a cardio and strength training centre, a youth room, three multipurpose spaces, and a triple gymnasium.

FACILITY MANAGER, WELLNESS CENTRE

Geoff Matthews

705-742-7777 Ext 2204

gmatthews@peterborough.ca

ASSISTANT FACILITY MANAGER

Lynn Sturch

705-742-7777 Ext 2255

lsturch@peterborough.ca

CUSTOMER SERVICE ADMINISTRATOR

Kim Darling

705-742-7777 Ext 2205

kdarling@peterborough.ca

FAX 705-743-9722

PETERBOROUGH MARINA

Peterborough Marina is situated on Little Lake between Locks 19 and 20 of the Trent-Severn Waterway within Del Crary Park. The Marina facility is City-owned and operated under contract. The Marina has overnight boating accommodations for up to 100 vessels. Some 20 cruisers and smaller runabouts also occupy the marina on a seasonal basis.

The Marina is also home to the Lift Lock and River Cruises, a tour boat company offering sightseeing trips over the lift lock and evening cruises on the Otonabee River. More than 10,000 passengers are carried yearly from the Marina.

PETERBOROUGH MARINA COORDINATOR

Don Jackson

705-742-7771

djackson@peterborough.ca

FAX: 705-745-9837

BEAVERMEAD CAMPGROUND

With such pleasant scenery and so many outdoor activities, it is no wonder camping is so popular in the Peterborough area. Beavermead Campground is a family campground and day-use park that is owned and operated by the City of Peterborough. Located on beautiful Little Lake in the heart of Peterborough, Beavermead Campground has 98 sites, 46 un-serviced sites and 52 are serviced to support your camping needs!

Location

2011 Ashburnham Road,
Peterborough, Ontario

2013 Season

Beavermead Campground is open for camping from May 3 - October 14, 2013 inclusive. Reservations are currently being accepted.

Phone Number:

705-742-9712

Phone number in off-season:

705-742-7777 Ext 1873

E-mail:

beavermead@peterborough.ca

PETERBOROUGH FIRE SERVICES

The Peterborough Fire Brigade came into being in February 1850 and continued until the Peterborough Fire Department was formed in 1908. Today Peterborough Fire Services totals 99 personnel spread throughout the suppression and rescue division, public education, prevention, administration, communications, training and emergency, and management.

The Division operates four Fire Halls with 12 emergency response vehicles. The goal is to reach any fire/accident scene inside the city within 6 minutes, while driving safely for the circumstances.

The Peterborough Fire Services provides a full range of emergency and support services to the community that is outlined in the services at a glance chart.

Location

Peterborough Fire Services Headquarters
210 Sherbrooke Street
Peterborough, Ontario
705-745-3281

FIRE CHIEF

Doug Tennant

705-745-3281 Ext. 221

dtennant@peterborough.ca

DEPUTY FIRE CHIEF

Chris Snetsinger

705-745-3283 or 705-742-7777 Ext. 2755

csnetsinger@peterborough.ca

MANAGER, STAFFING AND LOGISTICS

Marsie Mackay

705-745-3281 Ext 220

mmackay@peterborough.ca

ADMINISTRATIVE ASSISTANT

Pamela Kelly

705-745-3284 or 705-742-7777 Ext. 2755

pkelly@peterborough.ca

FIRE PREVENTION

Paul Waller

Greg Simmons

Steve Whitehill

705-745-3281

pwaller@peterborough.ca

gsimmons@peterborough.ca

swhitehill@peterborough.ca

PUBLIC EDUCATION

Maureen Crowley, Public Educator

705-745-3281

mcrowley@peterborough.ca

Training Division

Coordinate and provide training and testing to the Emergency Response Division and the Fire Prevention Division.

Coordinate public events and training involving the Emergency Response Division.

CHIEF TRAINING OFFICER

Dave Braun

705-742-7777 Ext 2755

dbraun@peterborough.ca

EMERGENCY MANAGEMENT

Municipal emergencies can be defined as situations that are caused by forces of nature, accidents, intentional acts, and such that constitute a danger of major proportions to life or property. Situations, or the threat of impending situations, which abnormally affect the lives and property in our society, required a controlled and coordinated response by a number of agencies, both governmental and private. This response should be under the direction of appropriate elected officials, as distinct from routine operations carried out by an agency or agencies such as police forces, fire departments or hospitals.

Whenever an emergency occurs, which affect the lives and property of citizens, the initial and prime responsibility for providing immediate assistance rests with the local municipal government. Emergency planning is designed to ensure the co-ordination of municipal, private and volunteer services during an emergency to bring the situation under control as quickly as possible.

MANAGER, EMERGENCY PLANNING

Jodi Denoble, Emergency Planner

705-745-3281 Ext. 217

jdénoble@peterborough.ca

ASSISTANT EMERGENCY PLANNER

Sharon Depatie

705-745-3281 Ext. 523

ssepattie@peterborough.ca

PLANNING AND DEVELOPMENT SERVICES DEPARTMENT

The Planning and Development Services Department includes the Planning Division, Housing Division, Land Information Services Division, and Building Division. The Planning Division oversees the purchase and sale of all municipal property, the operation of the Peterborough Municipal Airport and the development of the City's Industrial Parks. The department has a "development team" focus, tailored to each inquiry in order to act quickly on enquiries for new and expanding business opportunities as well as all planning and development matters. The department is a one-stop venue for all municipal government services that support the development industry.

DIRECTOR

Malcolm Hunt

705-742-7777 Ext 1809

mhunt@peterborough.ca

ADMINISTRATIVE ASSISTANT TO THE DIRECTOR

Shelagh Fry

705-742-7777 Ext 1844

sfry@peterborough.ca

FAX: 705-742-5218

PLANNING

Services offered by the Planning Division include the processing of plans of subdivision, zoning, official plan amendments and site plans. The Division's services also include development-related engineering, such as lot grading and stormwater management. The Planning Division's scope of responsibilities includes urban design such as downtown streetscapes, parks planning, the sale and purchase of municipal property and the development of the City's Industrial Parks.

City Council, other boards, commissions and departments are advised through the Planning Division of applications to change the Official Plan, Zoning by-law, Housing Policy and other planning documents.

The Committee of Adjustment, which considers minor variance and severance matters, is also administered by the Planning Division.

MANAGER OF PLANNING/PLANNER, SUBDIVISION CONTROL AND SPECIAL PROJECTS

Ken Hetherington

705-742-7777 Ext 1781

khetherington@peterborough.ca

PLANNER, URBAN DESIGN Brian Buchardt

705-742-7777 Ext 1734

bbuchardt@peterborough.ca

PLANNER, LAND USE

Caroline Kimble

705-742-7777 Ext 1735

ckimble@peterborough.ca

PLANNER, POLICY AND RESEARCH

Richard Straka

705-742-7777 Ext 1733
rstraka@peterborough.ca

LAND ASSET ADMINISTRATOR

Alex McLeod

705-742-7777 Ext 2100
amcleod@peterborough.ca

COMMITTEE OF ADJUSTMENT SECRETARY-TREASURER

Lisa Killingbeck

705-742-7777 Ext 1880
lkillingbeck@peterborough.ca

FAX: 705-742-5218

HOUSING DIVISION

The Housing Division administers the social housing portfolio for the City and County of Peterborough. Although not a direct housing provider, the City oversees the operations of approximately 22 publicly funded housing providers, including the Peterborough Housing Corporation. The Division also supports community development initiatives that promote affordable housing and access to housing including The Affordable Housing Action Committee and the Housing Resource Centre.

As a show of leadership in 2001, the City of Peterborough developed an Affordable Housing Strategy. The goal of the strategy was to stimulate the development of affordable housing and to complement the City's social housing responsibilities. To date, 11 new projects (totaling 354 units) are either occupied, under construction or are at the approval/design stages.

MANAGER OF HOUSING

Susan Bacque

705-742-7777 Ext 1492
sbacque@peterborough.ca

HOUSING PROGRAM ASSISTANT

Michelle Longhurst

705-742-7777 Ext 1499
mloonghurst@peterborough.ca

HOUSING FINANCIAL OFFICER

David Pritchard

705-742-7777 Ext 1780
dpritchard@peterborough.ca

PETERBOROUGH MUNICIPAL AIRPORT

The Peterborough Municipal Airport is owned by the City of Peterborough.

The Airport has the longest paved runway between Ottawa and Toronto. Our new 7,000 foot runway and infrastructure is designed to support narrow body aircraft such as the Boeing 737 and Airbus 320 series. This full service facility caters to both business and general aviation including fuel, oil, aircraft repairs, aircraft completion centre, avionics, parts sales and aircraft modification. The airport has charter services available to fly business or travel providing non-scheduled domestic and trans-border flights to meet your schedule.

Recently equipped with a new automated weather observation site (AWOS) and PAPI approach system (Precision Approach Path Indicator) allows pilots to access reliable information and assistance for approaches.

The Peterborough airport is serviced by the Canada Border Service Agency and offers a port of entry for general aviation clearance of up to 15 persons.

General aircraft movements play a very important role at the Airport. With approximately 25,000 - 30,000 aircraft movements per year; the day to day activity includes small recreational traffic to corporate jets, medivac flights, charter flights, cargo shipments and flight training activities. The airport has no noise bylaws or operating time curfews allowing unrestricted operation of freight and passenger flights.

Location

925 Airport Rd,
Peterborough, Ontario K9K 9P7

AIRPORT ADMINISTRATOR

Nancy Hewitt

705-742-7777 Ext 2171

nhewitt@peterborough.ca

LAND INFORMATION SERVICES

Land Information Services (LIS) was created from a growing need to better maintain and develop the City's land-related or geographic digital data. Over the last 30 years, mapping has evolved from paper based, to digital, to Geographic Information Systems (GIS). GIS produces smart maps where digital map data is linked to data within a database so that maps may be queried for information or used for spatial analysis.

One of the Division's roles is to work with other departments, consultants, contractors, and the public to not only supply GIS services, technical assistance, graphic arts, and map products, but also to help clear up land-related data inefficiencies and develop policies and procedures for the collection and maintenance of geographic data. The scope of responsibilities also includes the development, evaluation, and recommendation of system standards and procedures for GIS and web related projects along with GIS data analysis

and manipulation. It is also responsible for the documentation of GIS procedures and data sets, and the maintenance of corporate land-related information records.

LIS MANAGER
Mike MacLean

705-742-7777 Ext 1761
mmaclean@peterborough.ca

BUILDING DIVISION

The Building Division joined Planning and Development Services in 1997 and is an integral part of the “development team” approach in the City of Peterborough. The Building Division is responsible for ensuring compliance with the Building Code and various City by-laws. The technically trained staff of plans examiners and field inspectors are available to help with the public’s building projects. Services include the administration, enforcement, education and dispersal of information to the public regarding the Building Code, Zoning, Minimum Property Standards, Development Charges, Parks Levy, Site Plan Control, Signs and fences to name a few.

CHIEF BUILDING OFFICIAL
Dean Findlay

705-742-7777 Ext 1791
dfindlay@peterborough.ca

ADMINISTRATIVE ASSISTANT
Kim Zevenhoven

705-742-7777 Ext 1892
kzevenhoven@peterborough.ca

FAX: 705-742-5218

THE PETERBOROUGH LAKEFIELD COMMUNITY POLICE SERVICE

On January 1, 1999, the Peterborough Community Police Service and the Lakefield Police Service amalgamated to become the Peterborough Lakefield Community Police Service. Our Municipal policing experience exceeds 275 years of delivering a professional, friendly and helpful service to our communities.

The Vision of this police service is to be the best Police Service, providing the highest standard of professionalism in partnership with our community. To that end, our members have been encouraged to interact with the community and develop partnerships among all citizens, businesses, and community organizations. Through these partnerships, we can jointly provide a safe community and create innovative solutions to specific problems that are unique to our policing jurisdiction.

The police service currently operates two police facilities. Police headquarters is located at 500 Water Street in the City of Peterborough and a detachment office is maintained at 12 Queen Street in the Lakefield Ward, of Smith-Ennismore Lakefield Township.

Our management team may be contacted directly by calling 705-876-1122 and using the directory to access individuals.

Our Web Site can be accessed at:
General e-mail address is available at:

www.peterboroughpolice.com
police@peterboroughpolice.com

Location

500 Water Street, P.O. Box 2050
Peterborough, Ontario K9J 7Y4

CHIEF OF POLICE

Murray Rodd

705-876-1122 Ext 221

mrodd@city.peterborough.ca

DEPUTY CHIEF OF POLICE

Stephen Streeter

705-876-1122 Ext 222

sstreeter@city.peterborough.ca

Total Authorized Strength (2011)

Uniform Members: 129

Auxiliary Members: 32

Civilian Members: 51

GREATER PETERBOROUGH AREA ECONOMIC DEVELOPMENT CORPORATION

The Greater Peterborough Area Economic Development Corporation (GPAEDC) is mandated to sustain and develop existing and potential economic interests for the County and City, embracing all aspects of economic development including industry, agriculture and other commercial activity.

The other key component to the GPAEDC is tourism. Peterborough & the Kawarthas Tourism is the officially recognized tourism agency for the Greater Peterborough Area representing all tourism businesses in the Kawarthas.

Location

210 Wolfe Street
Peterborough, Ontario K9J 2K9

PRESIDENT AND CEO

Dan Taylor

705-743-0777 Ext 2120

dtaylor@gpaedc.on.ca

CORPORATE ASSISTANT

Aleksandra de Oliveira

705-743-0777 Ext 2122

adeoliveira@gpaedc.on.ca

TOURISM LOCATION

Peterborough & the Kawarthas
1400 Crawford Drive
Peterborough, Ontario K9J 6X6

705-742-2201

info@thekawarthas.net

MANAGER, TOURISM AND VISITOR INFORMATION SERVICES

Gail Henderson

705- 742-2201 Ext. 2140

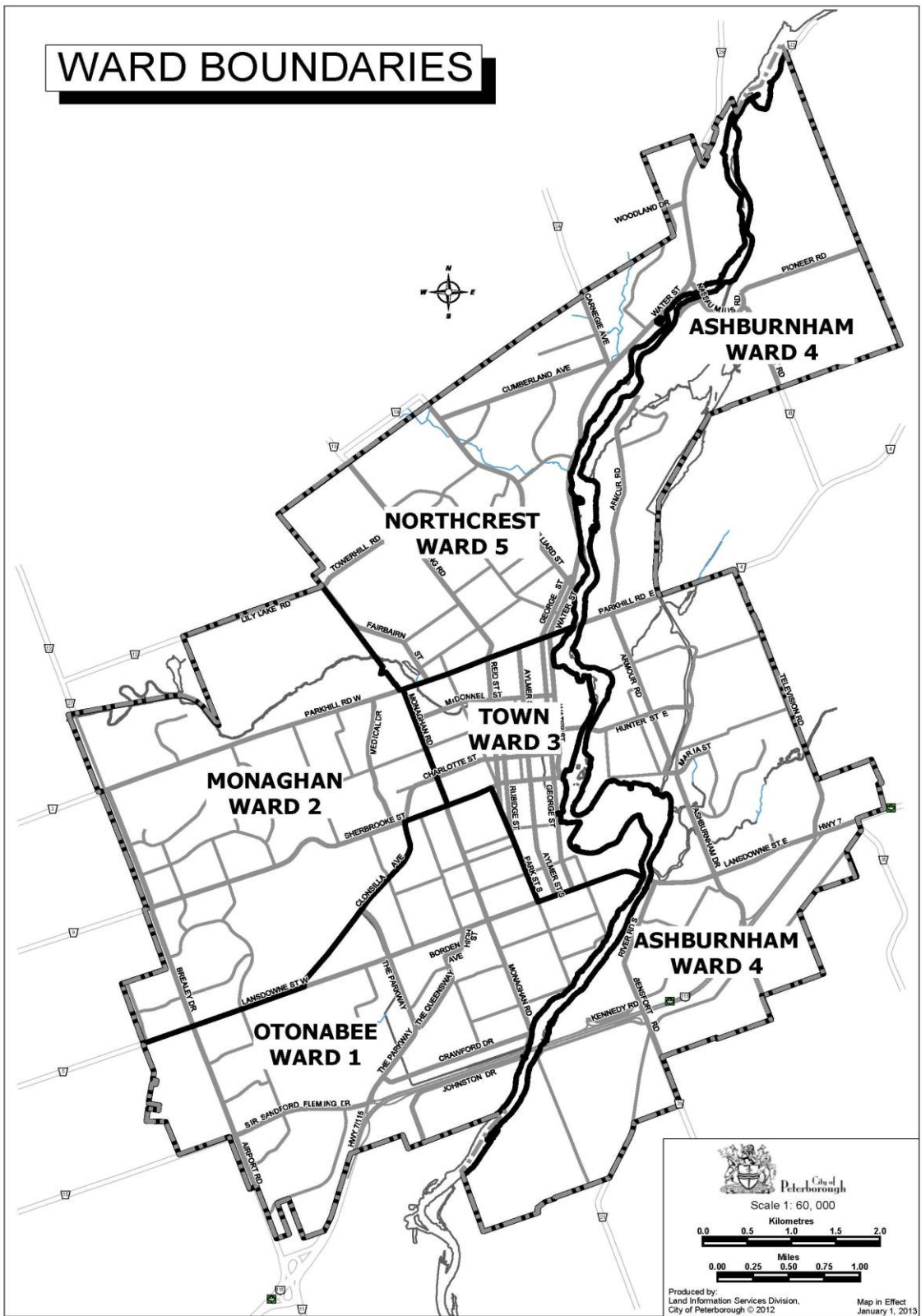
ghenderson@gpaedc.on.ca

POPULATION OF PETERBOROUGH (SETTLEMENT, TOWN AND CITY)

1824	6*
1826	200*
1832	500*
1838	900*
1850	2,100*
1860	4,000*
1870	4,620
1880	6,375
1890	9,337
1900	10,879
1910	16,923
1920	21,790
1930	22,798
1940	24,530
1950	36,716
1960	46,592
1971	58,111*
1976	59,683*
1981	60,620*
1986	61,050*
1991	68,371*
1996	69,742*
2001	71,446*
2006	74,898*
2011	78,698*

**From census information*

WARD BOUNDARIES



BY-LAWS

The City of Peterborough has by-laws that regulate many issues. Some of these by-laws include:

- Solid Waste Collection (includes green waste and recyclable material and maximum containers permissible)
- Regulation of Animals
- Property Maintenance and Standards
- Noise
- Parking and Parking Fines

These By-laws, and others, are available on our City Website at www.peterborough.ca.

If you require further information regarding any of these by-laws or any other city by-law, please contact the City Clerk's Office at 705-742-7777 Ext 1820 to obtain the most updated reference.

DOG LICENSING

Since January 1, 2000 Animal Control Services and the Licensing of dogs has been delivered by the **Peterborough Humane Society**. The Humane Society Administers and enforces Municipal Animal Care and Control By-Laws on behalf of the City. See below for the Society's contact information.

The following are the fees effective for the 2012 calendar year:

Status of Dog <i>Same price for male or female dog</i>	Annual Dog Licence Fee	Annual Dog Licence Fee for Owner Over 65 Years of Age (proof of age required)	Late Fee (if paid after February 15 in each year)
Unaltered	\$75.00	\$50.00	\$10.00
Altered -(satisfactory evidence required)	\$50.00	\$30.00	\$10.00

Peterborough Humane Society
385 Lansdowne Street East
Peterborough, Ontario K9L 2A3

705-745-4722

Website: www.peterboroughhumanesociety.ca

Email: info@ptbohs.com

FAX: 705-745-9770

Hours of Operation:

Administration: 8:00 am - 4:30 pm Daily

Viewing and Adoption: 10:00 am - 4:00 pm Daily