



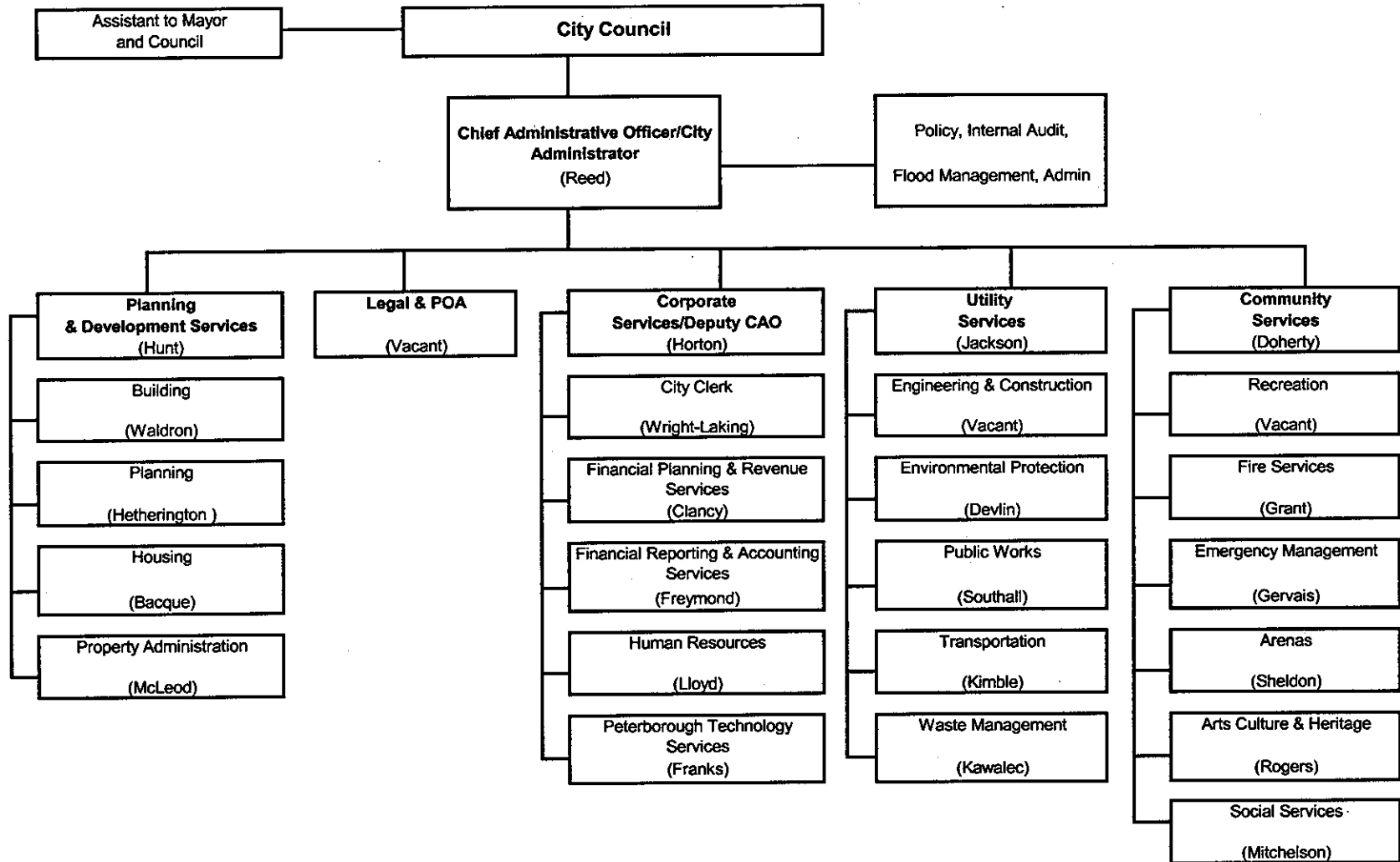
City of
Peterborough

Organizational Charts

TABLE OF CONTENTS

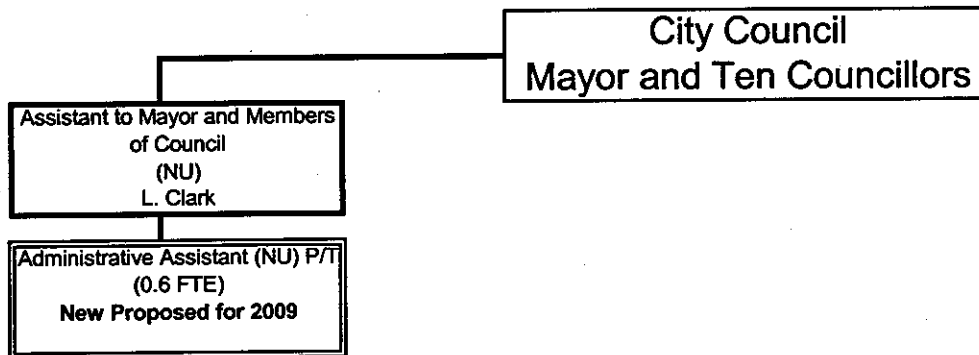
<u>2009 WORK PROGRAMS</u>	<u>2009 ORGANIZATIONAL CHARTS</u>	<u>2009 USER FEES</u>
<p>General Government CAO Office City Clerk's Office Financial Reporting and Accounting Services and Financial Planning & Revenue Services Property Maintenance Information Services Human Resources Legal Services & POA Office</p> <p>Utility Services Administration Engineering and Construction Public Works Transportation - Parking - Traffic - Transportation Demand Management - Public Transit Environmental Protection Waste Management</p> <p>Community Services Community Services Administration Emergency Management Fire Services Recreation Peterborough Sport & Wellness Centre Arts, Culture & Heritage - Administration - Heritage Preservation Office - Museum and Archives - Library - Art Gallery of Peterborough Arena Division Memorial Centre and Morrow Park Social Services - Social Assistance - Peterborough Employment Resource Centre - Homelessness Program Community Partnerships & Family Services - Children's Services - Peterborough Community Social Plan</p> <p>Planning and Development Services Planning Land Information Services Housing Building Airport</p>	<p>Departmental Summary</p> <p>General Government Council City Administrator Corporate Services Peterborough Technology Services Legal Services</p> <p>Protective Services Peterborough-Lakefield Community Police Service</p> <p>Utility Services Engineering, Construction Public Works Division Transportation Division Environmental Services Waste Management</p> <p>Community Services Community Services Summary Emergency Management Peterborough Fire Services Recreation Peterborough Sport and Wellness Centre Arts, Culture and Heritage Peterborough Centennial Museum & Archives Peterborough Public Library Board Art Gallery of Peterborough Arenas Division Social Services Summary Social Assistance Community Partnerships & Family Services</p> <p>Planning and Development Services</p>	<p>General Government Corporate Services - Financial Planning and Revenue Services - Clerk's Office Legal Services – POA Office Legal Services</p> <p>Utility Services Engineering Public Works Transportation - Parking - Transit Waste Water Treatment Plant Waste Management</p> <p>Community Services Fire Prevention Recreation - Instructional Sports - Peterborough Sport & Wellness Centre - Millennium Park - Queen Alexandra Community Centre - Outdoor Sport Field Permitting - Peterborough Marina Heritage Preservation Office Museum and Archives Library Art Gallery of Peterborough Arenas - Evinrude Centre - Kinsmen Centre - Northcrest Community Centre - Memorial Centre and Morrow Park Social Services - Directly Operated Programs</p> <p>Planning and Development Services Application Amendment Fees Land Information Building Inspection By-law Enforcement ORCA Fees Airport Operating Revenue</p>

City of Peterborough Organization Chart



Updated October 8, 2008

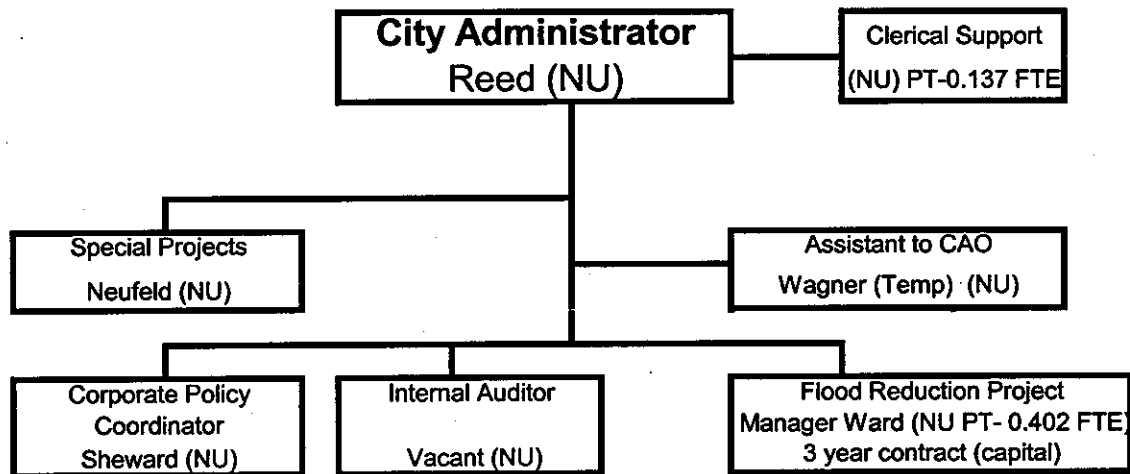
Council



Staff complement	
Mayor & 10 Councillors	11.000
NU - Mayor's Secretary	1.000
Part Time	0.600
Total	12.600

Updated October 24, 2008

City Administrator's Office

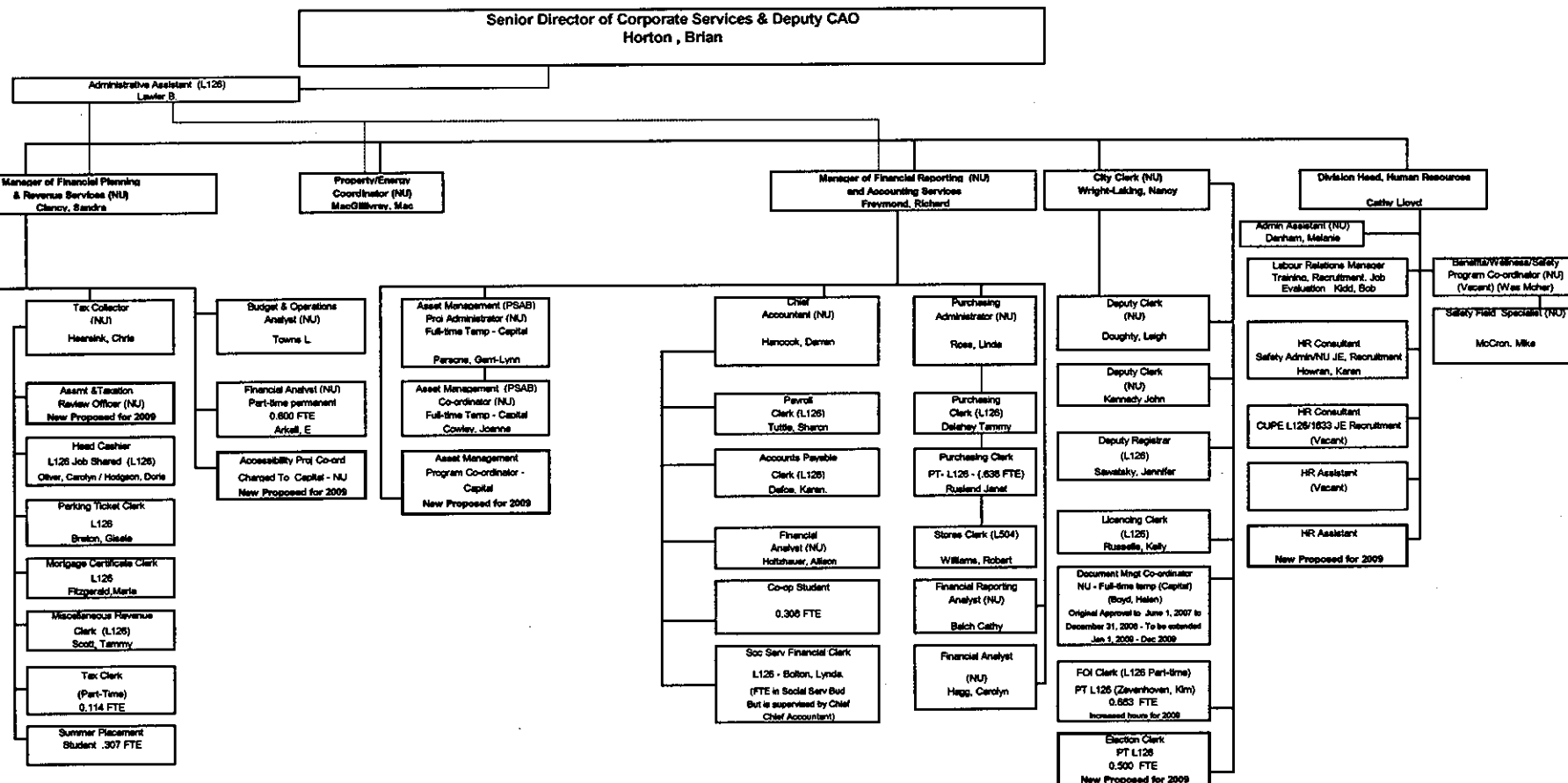


* RoseMary Reid is on secondment to the POA Office

Staff complement	
NU	5.000
Capital	0.402
Operating PT	0.137
Total	5.539

Updated October 24, 2008

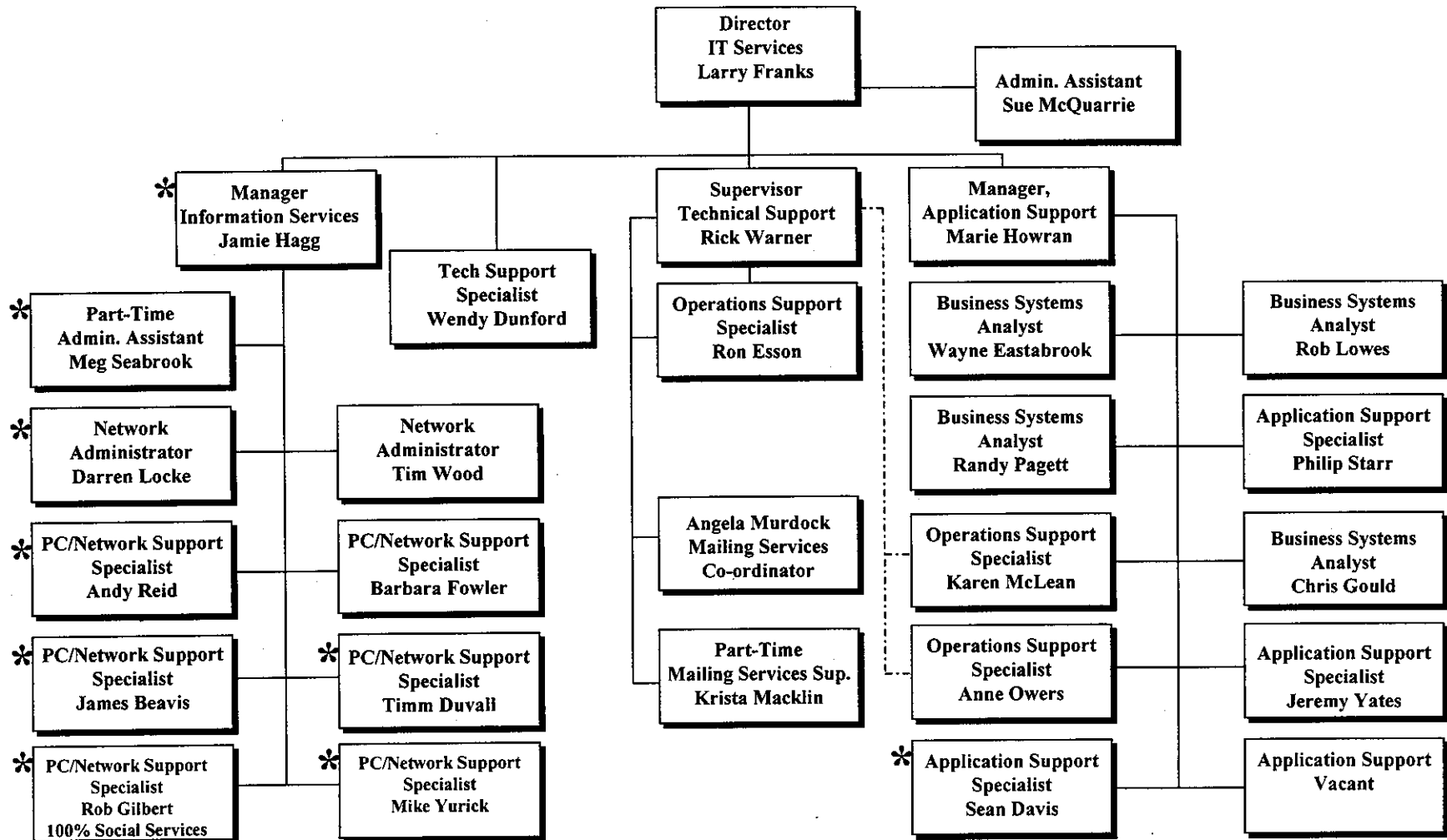
Corporate Services



Staff Complement (ex SS Fin Clerk)	FPRS	FRAS	Clk	Prog	HR	Total
NU	5,750	6,250	3,000	1,000	8,000	24,000
L126	6,400	3,000	2,000			11,400
L504	0,000	1,000	0,000			1,000
Subtotal Full Time (Op)	12,150	10,250	5,000		9,000	36,400
Part Time	1,642	0,946	1,183			3,771
Total Full & Part time (Op)	13,792	11,196	6,183	1,000		40,171
Charged to Capital	1,000	3,000	1,000			5,000
Total Op and Cap	14,792	14,196	7,183	1,000	9,000	45,171

Update October 24, 2008

Peterborough Technology Services

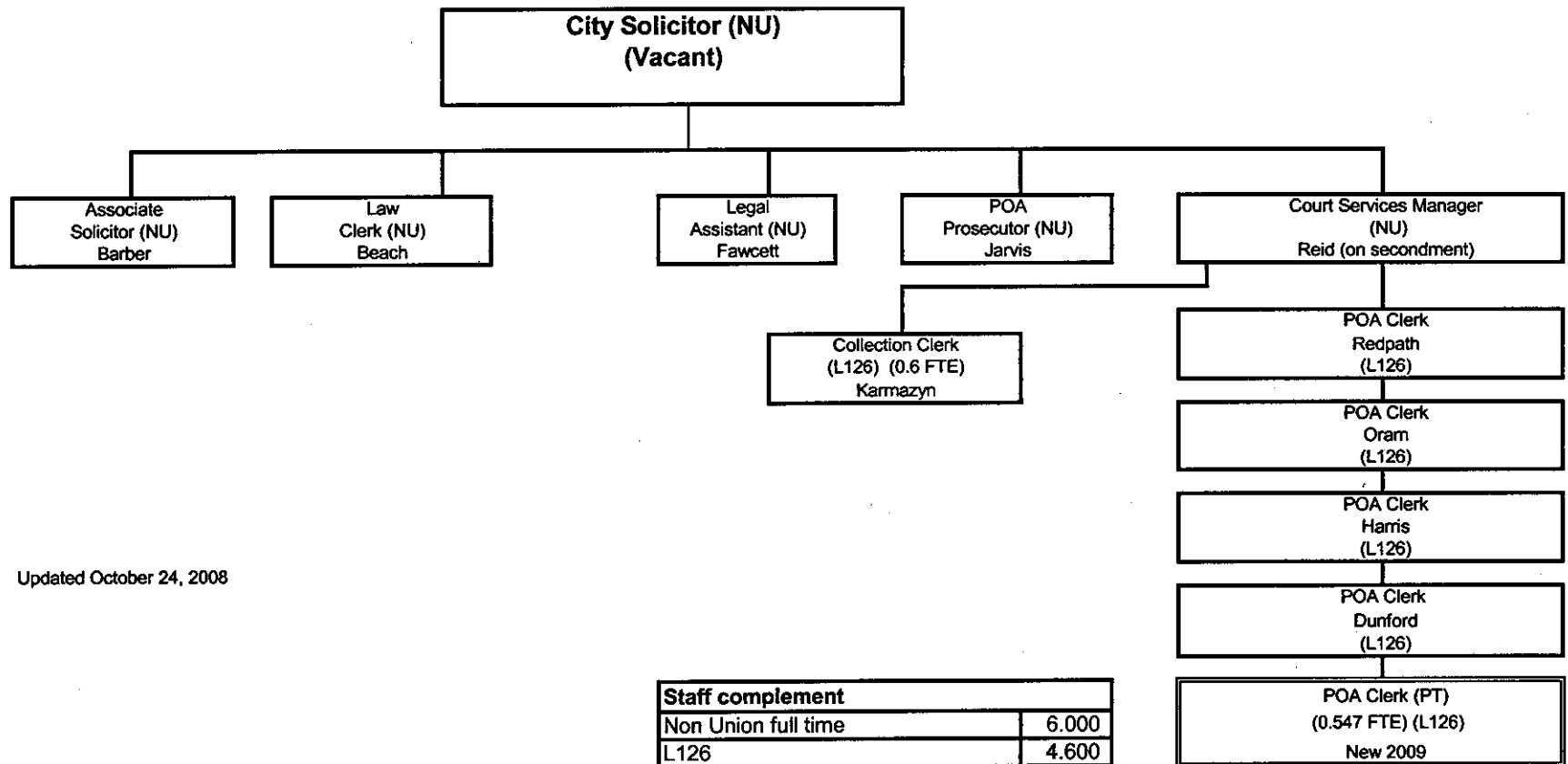


Note * = Located at City sites.

Total FTE = 25.20; City FTE = 14.60; PUG FTE = 10.60

Updated May 14, 2008

LEGAL SERVICES

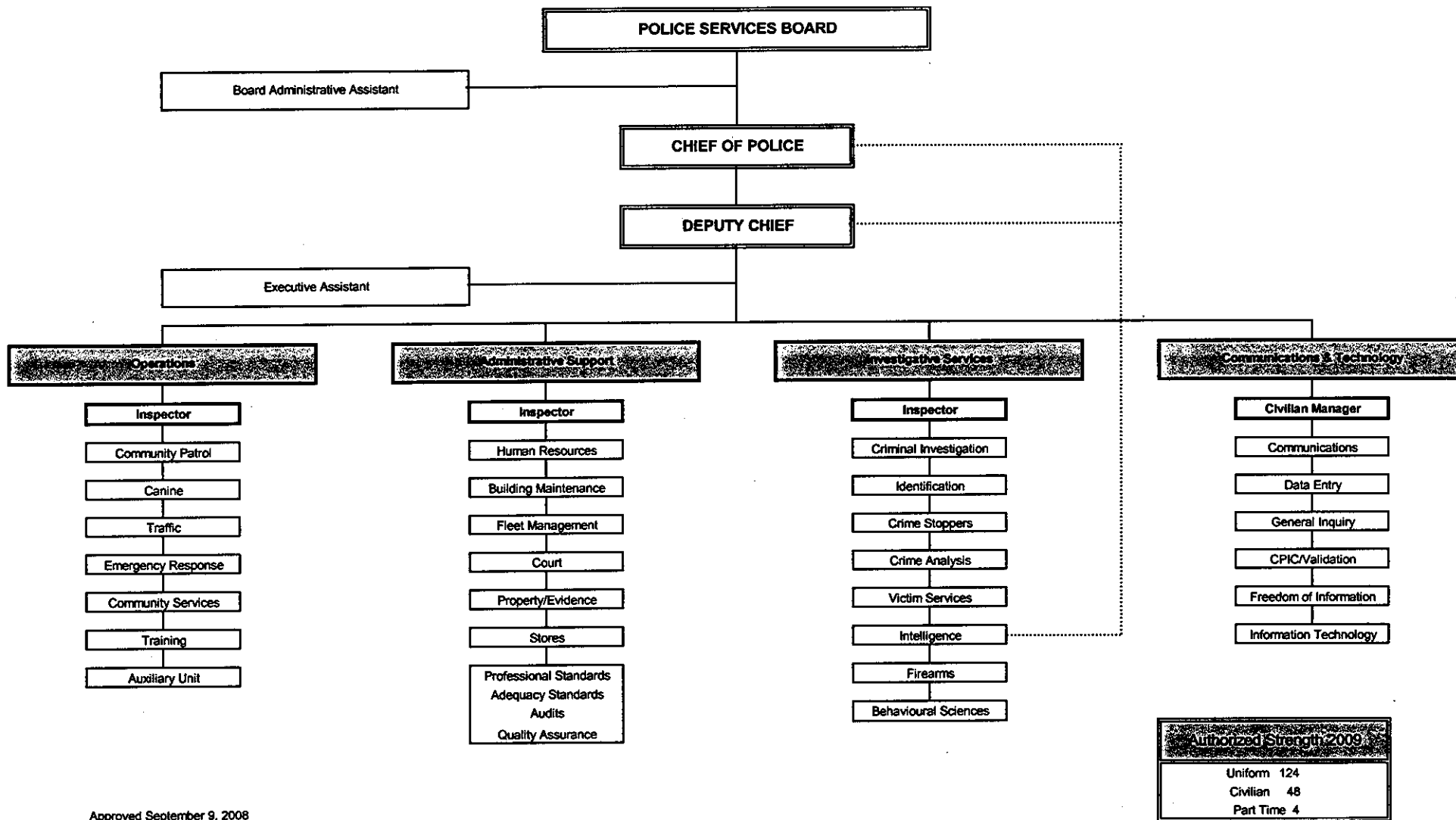


Updated October 24, 2008

Staff complement	
Non Union full time	6.000
L126	4.600
Part-time	0.547
Total	11.147

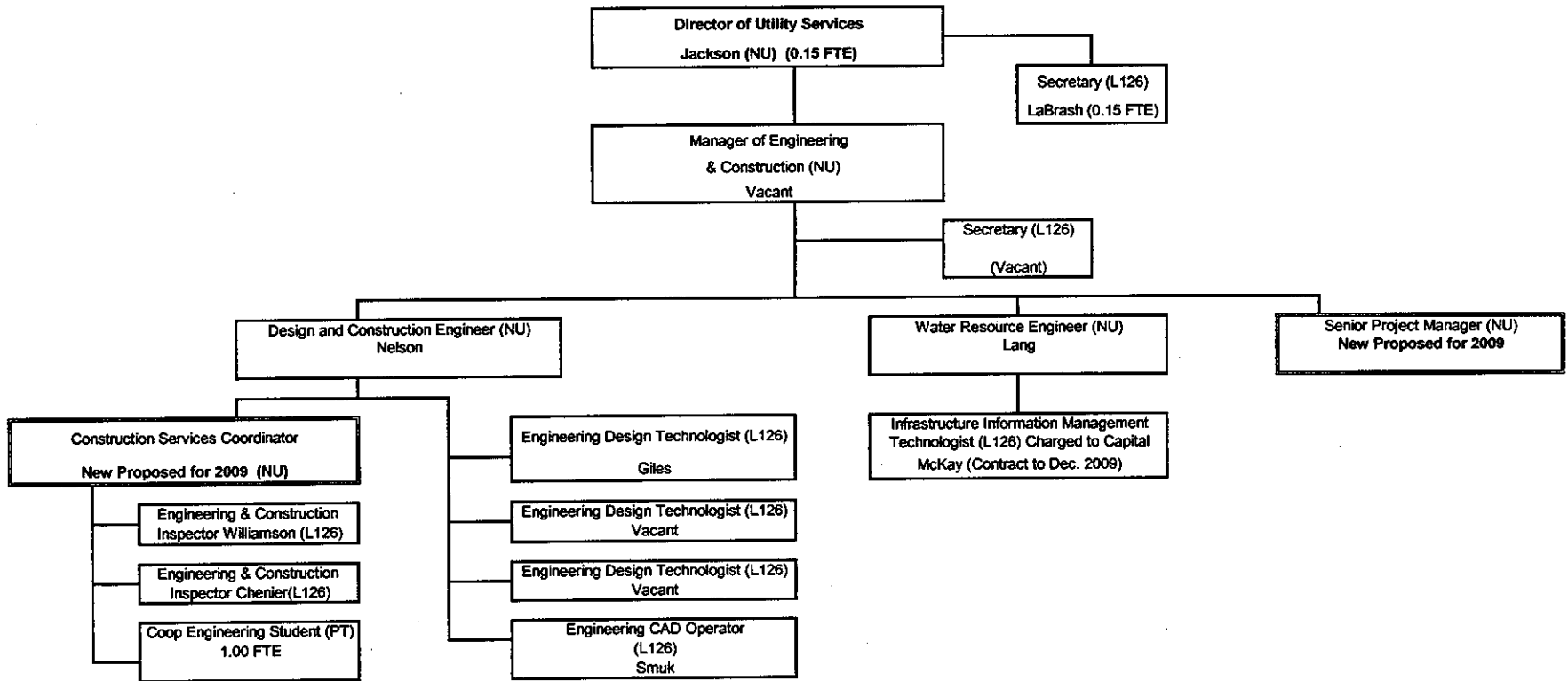
Peterborough Lakefield Community Police Service

Organizational Chart 2009



Approved September 9, 2008

Utility Services Engineering & Construction

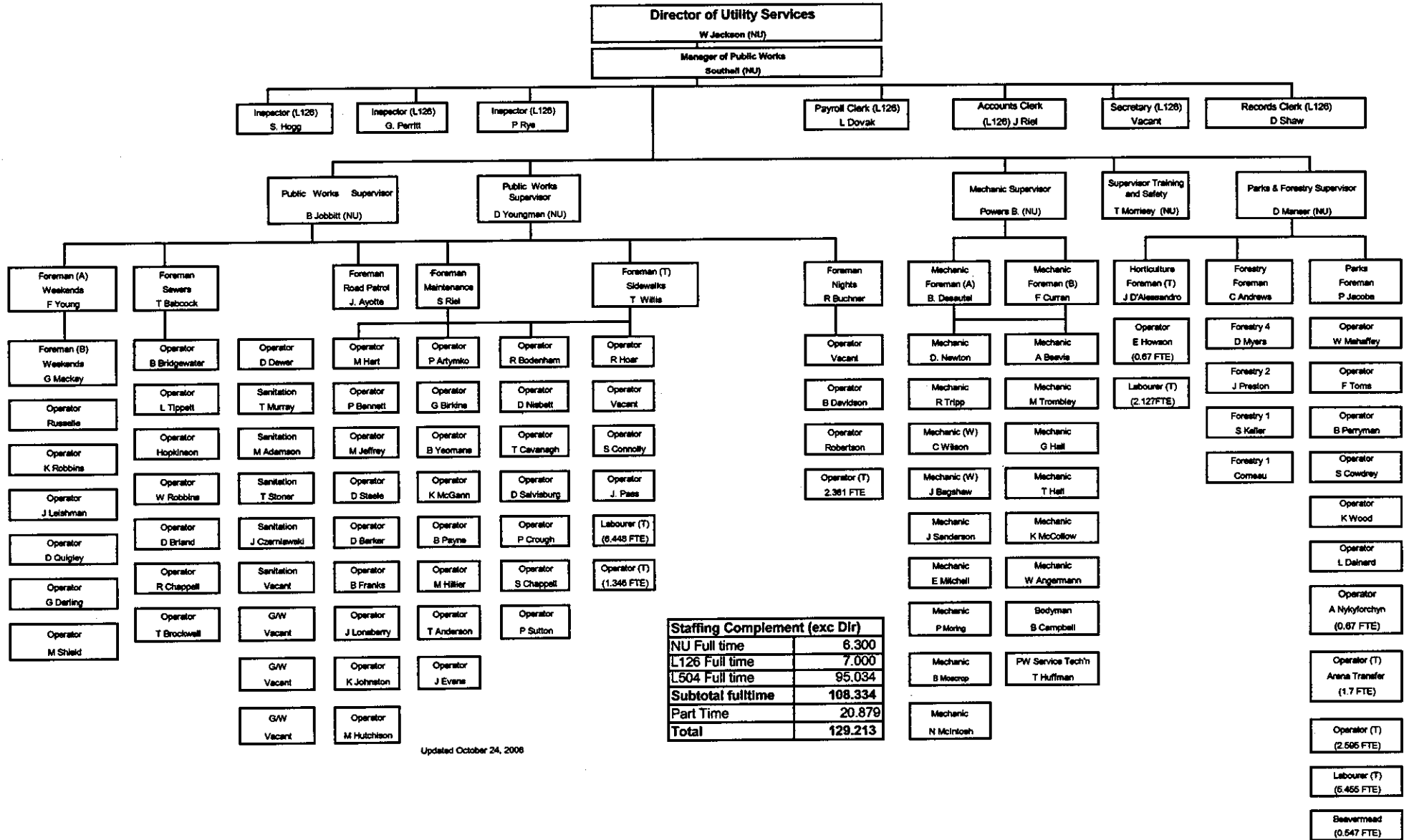


Note: 0.25 FTE Construction Services Coordinator charged to Street Light Program (101 353) and is reflected on that activity Form 1.

Updated October 24, 2008

Staff Complement (Incl. Director & Secretary)	
NU	5.150
L 126	7.150
PT	1.000
Total - Operating	13.300
Charged to Capital	1.000
Total - Operating & Capital	14.300

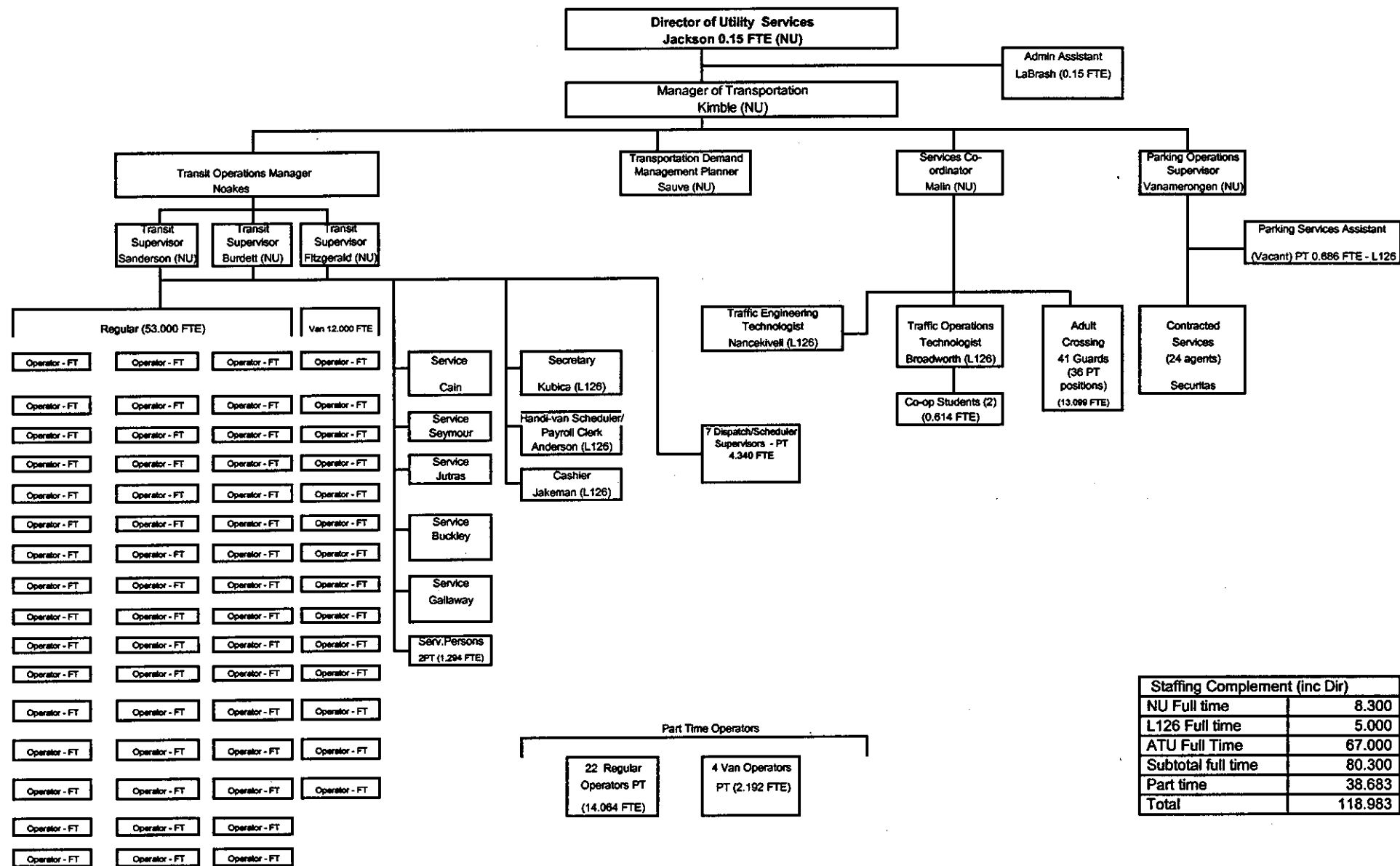
USD - Public Works Division



Staffing Complement (exc Dir)	
NU Full time	6.300
L126 Full time	7.000
L504 Full time	95.034
Subtotal fulltime	108.334
Part Time	20.879
Total	129.213

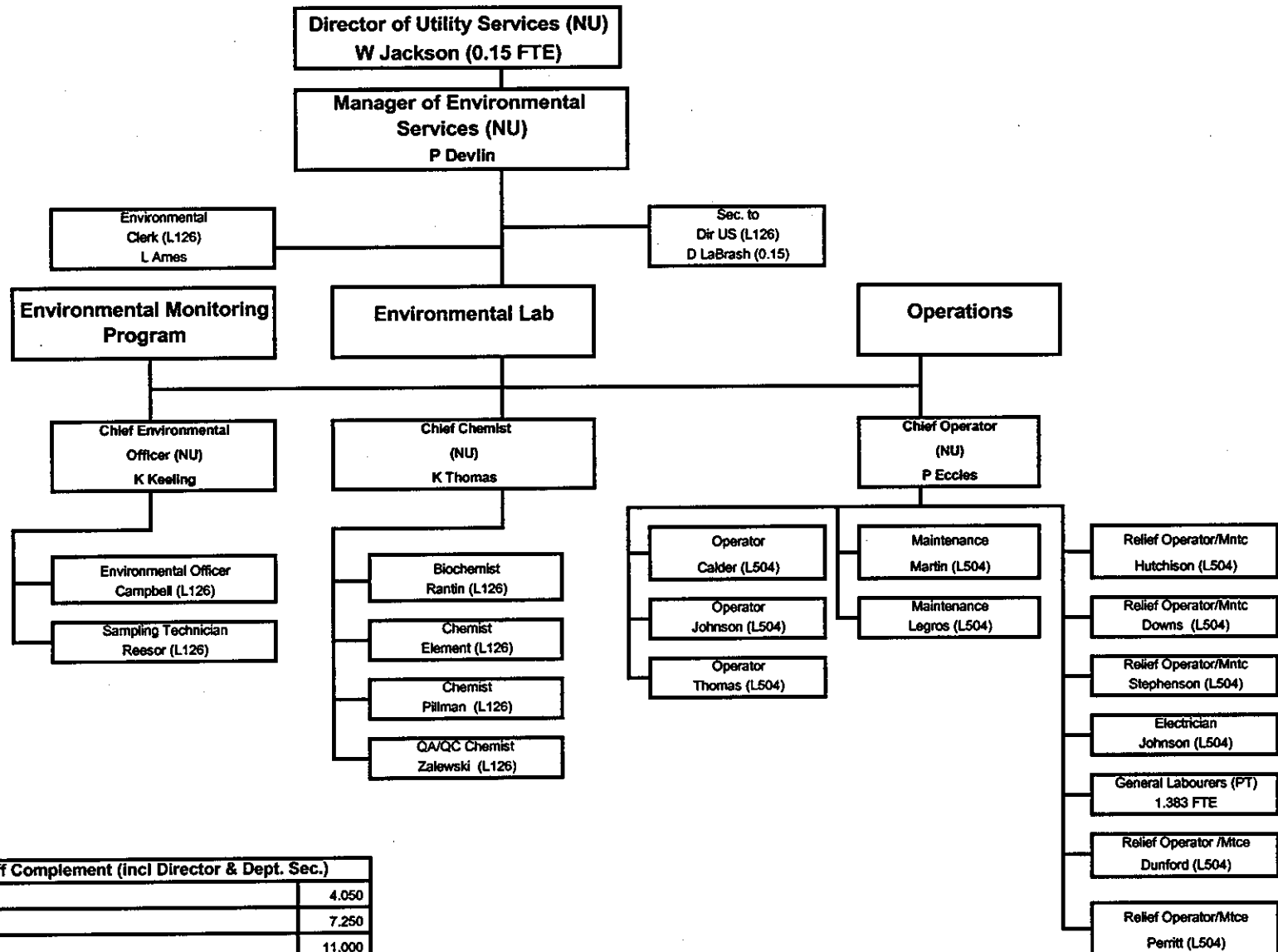
Updated October 24, 2006

USD - Transportation Division



Staffing Complement (inc Dir)	
NU Full time	8.300
L126 Full time	5.000
ATU Full Time	67.000
Subtotal full time	80.300
Part time	38.683
Total	118.983

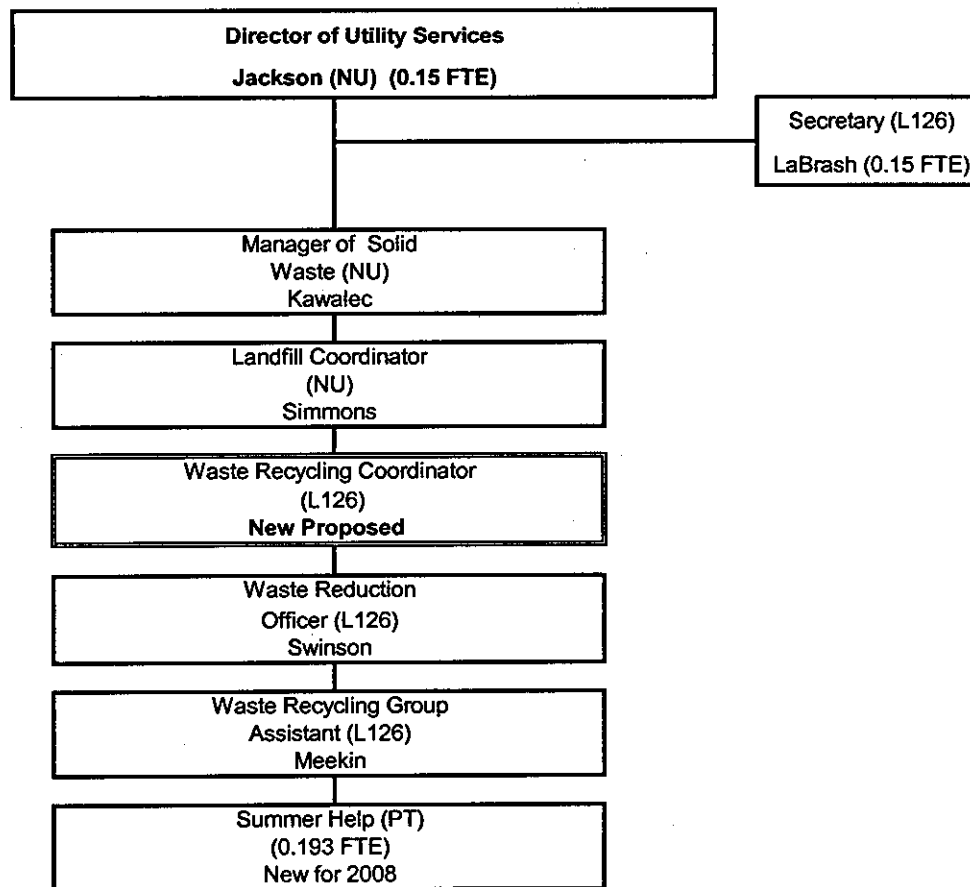
USD - Environmental Services



Staff Complement (incl Director & Dept. Sec.)	
NU	4.050
L126	7.250
L504	11.000
Part Time	1.383
Total Full & Part time	23.683

Updated October 24, 2008

Utility Services Waste Management



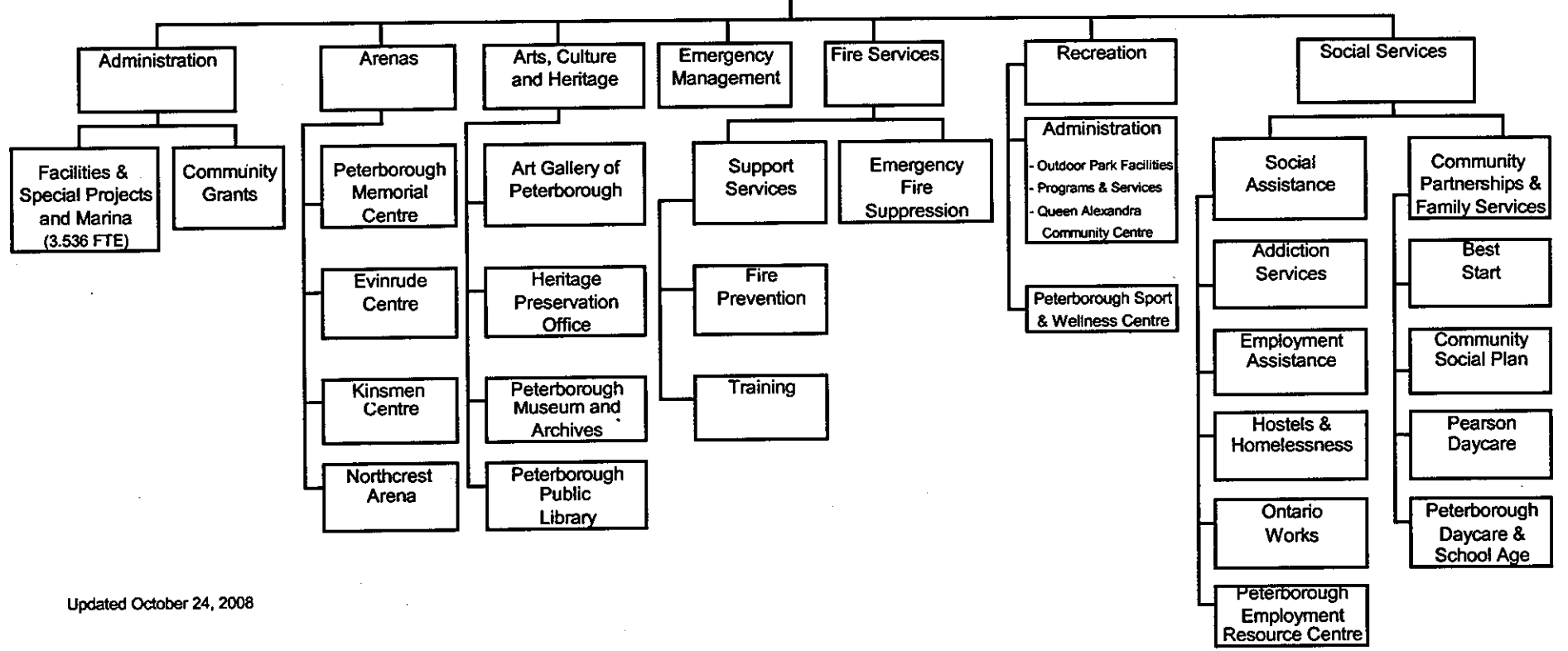
Staff Complement (Incl. Director & Secretary)	
NU	2.150
L 126	3.150
PT	0.193
Total - Operating	5.493

Updated July 22, 2008

Community Services

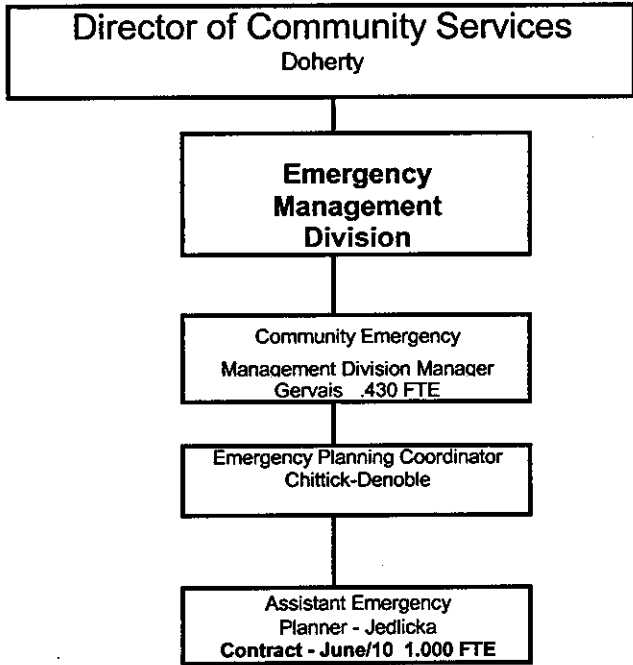
Director of Community Services
Doherty (1.00 FTE)

Secretary (L126)
Gogo (1.00 FTE)



Updated October 24, 2008

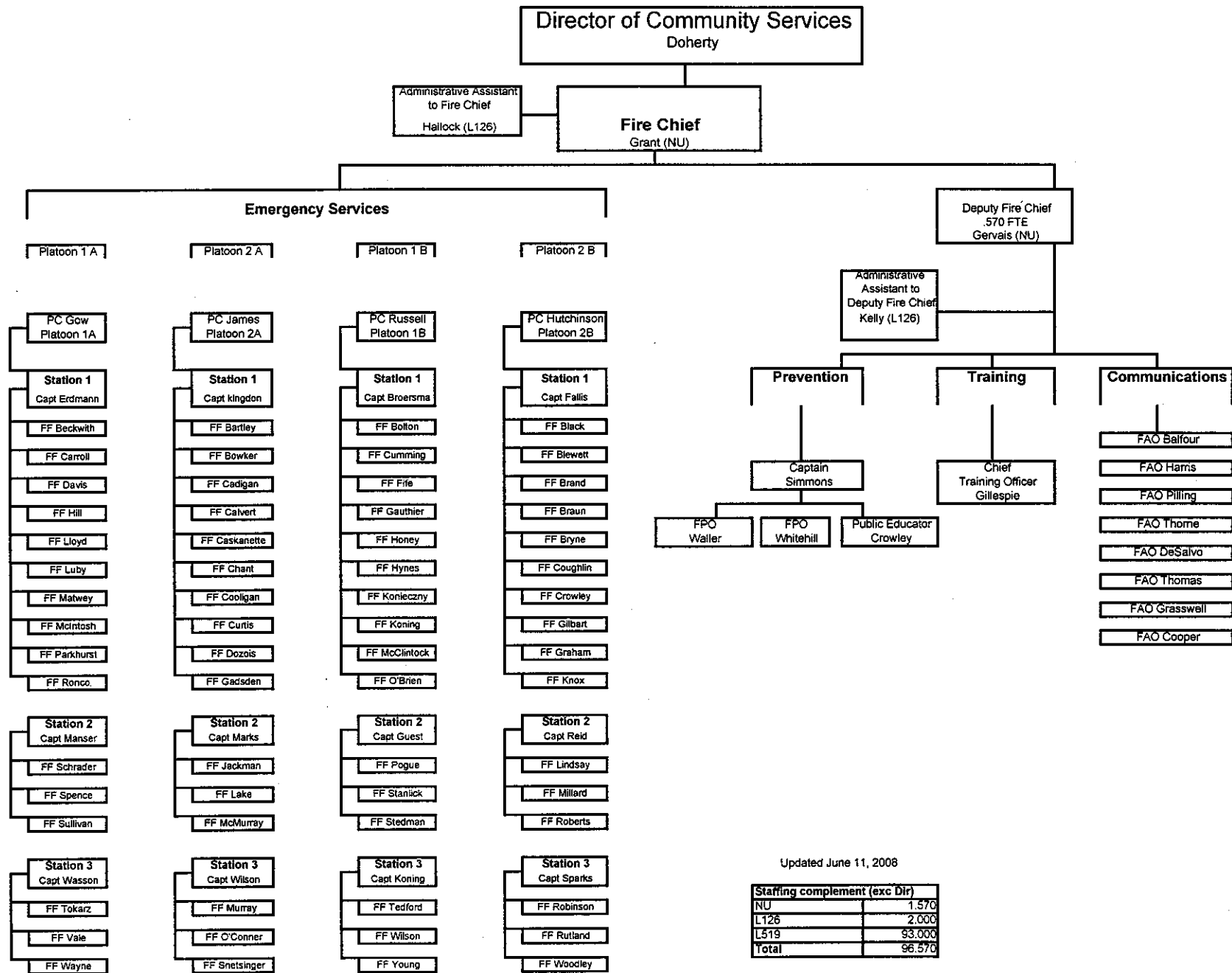
Emergency Management



Updated October 24, 2008

Staffing complement (exc Dir)	
NU	2.430
L126	0.000
L519	0.000
Total	2.430

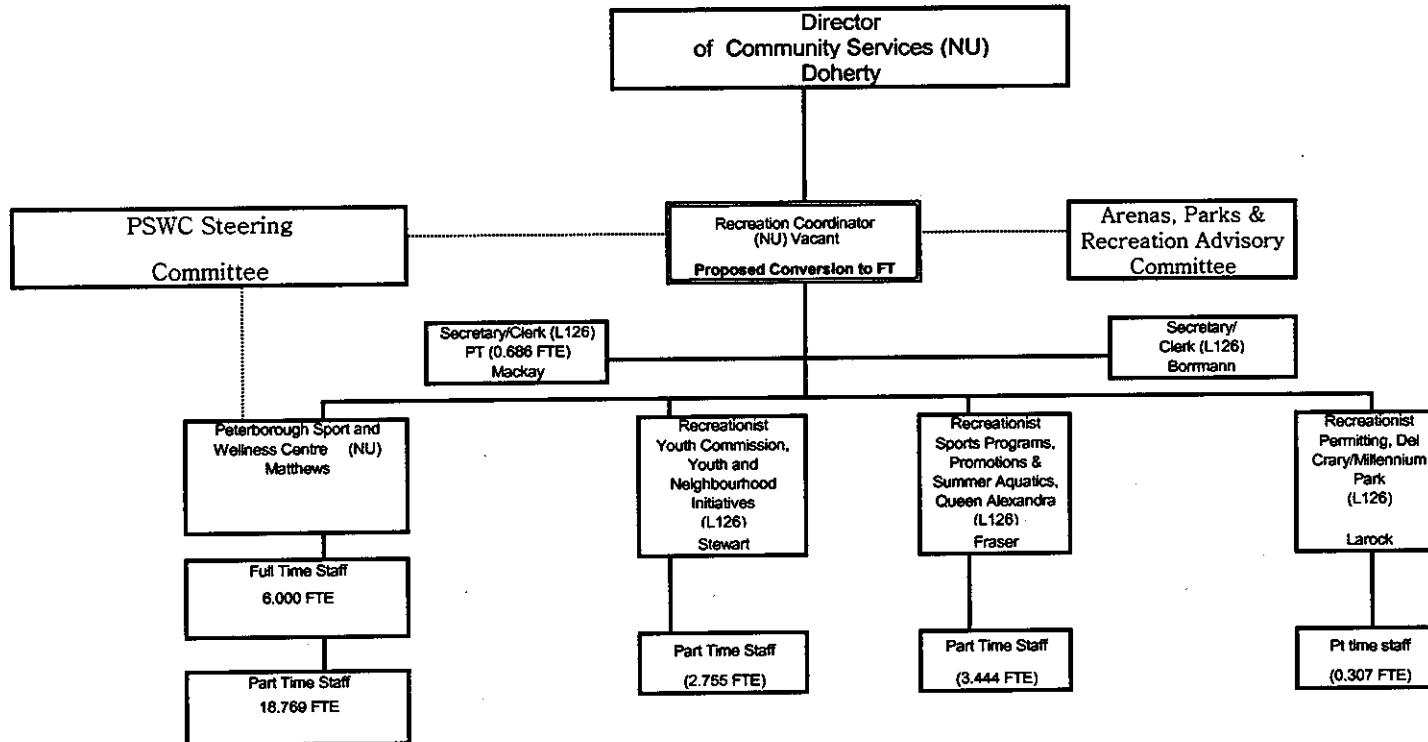
Peterborough Fire Services



Updated June 11, 2008

Staffing complement (exc Dir)	
NU	1,570
L126	2,000
L519	93,000
Total	96,570

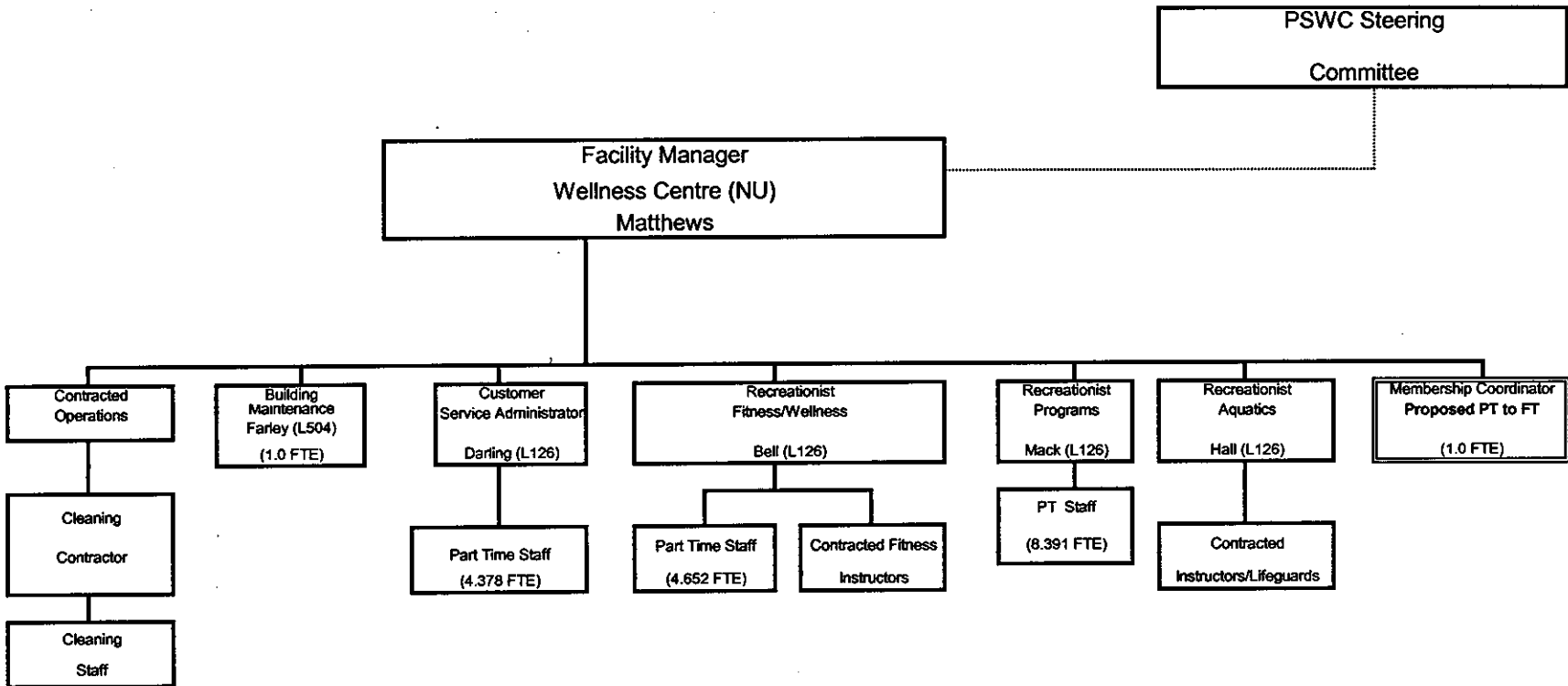
Community Services Department - Recreation



Updated: October 24, 2008

Staffing Complement (Excl. Dir)	
NU Full time	2,000
L126 Full time	9,000
L504 Full time	1,000
Subtotal full time	12,000
Part time	24,640
Total	36,640

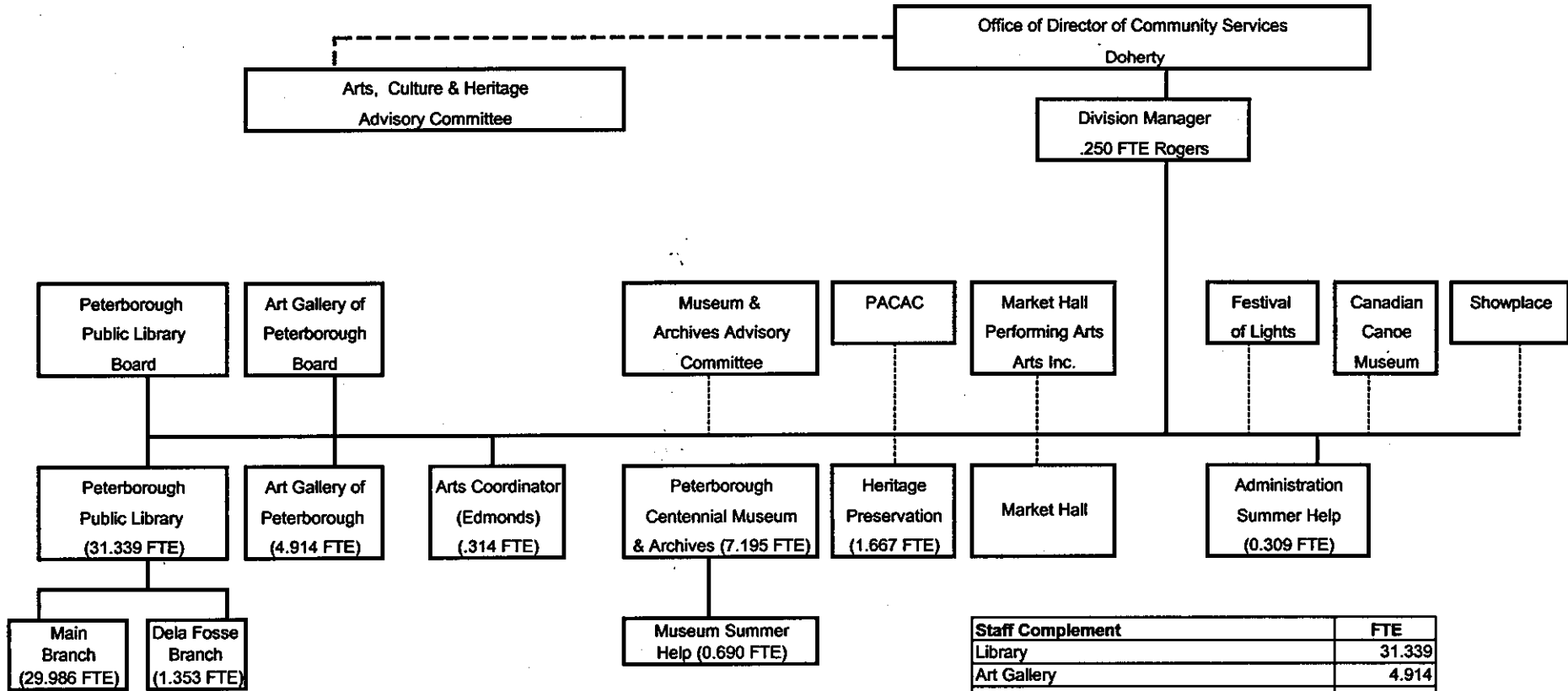
Community Services Department - Recreation - Peterborough Sport and Wellness Centre



NU Full time	1,000
L126 Full time	5,000
L504 Full time	1,000
Subtotal full time	7,000
Part time	17,421
Total	24,421

Updated October 24, 2008

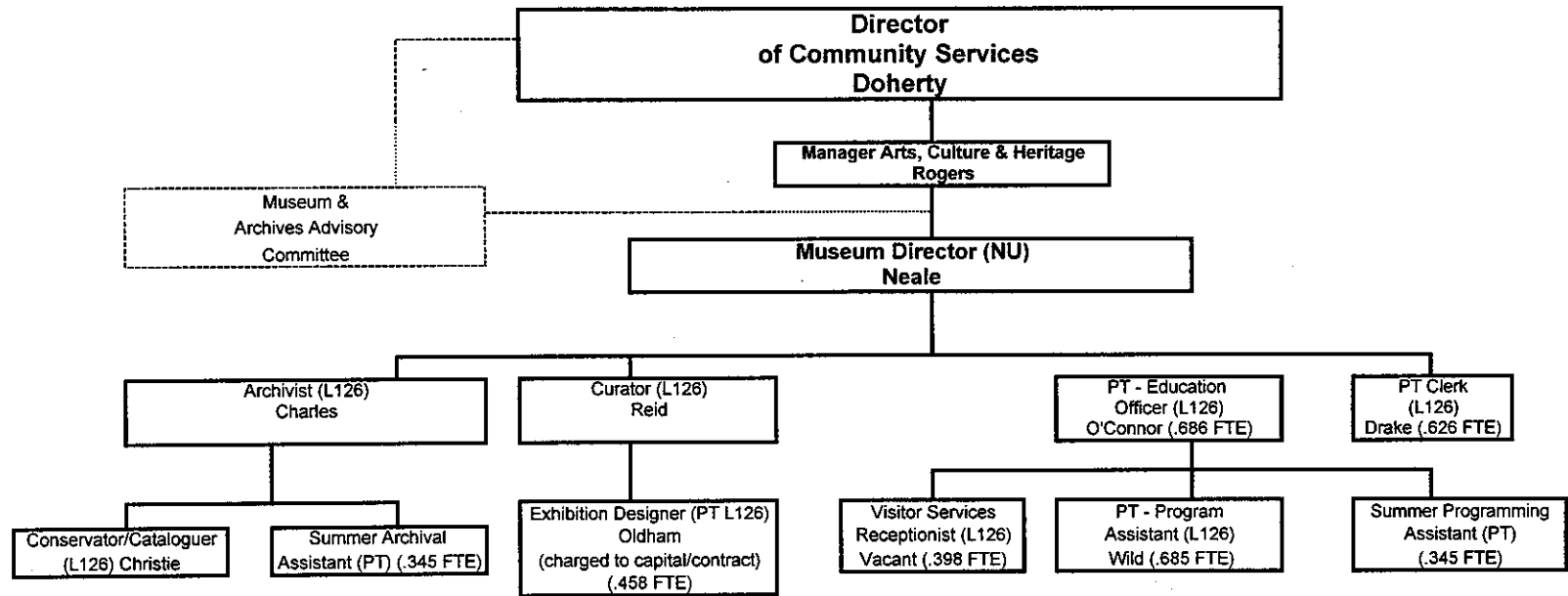
COMMUNITY SERVICES DEPARTMENT - ARTS, CULTURE & HERITAGE DIVISION



Updated October 24, 2008

Staff Complement	FTE
Library	31.339
Art Gallery	4.914
Museum	7.885
Heritage Preservation	1.667
Admin	0.873
Total	46.678

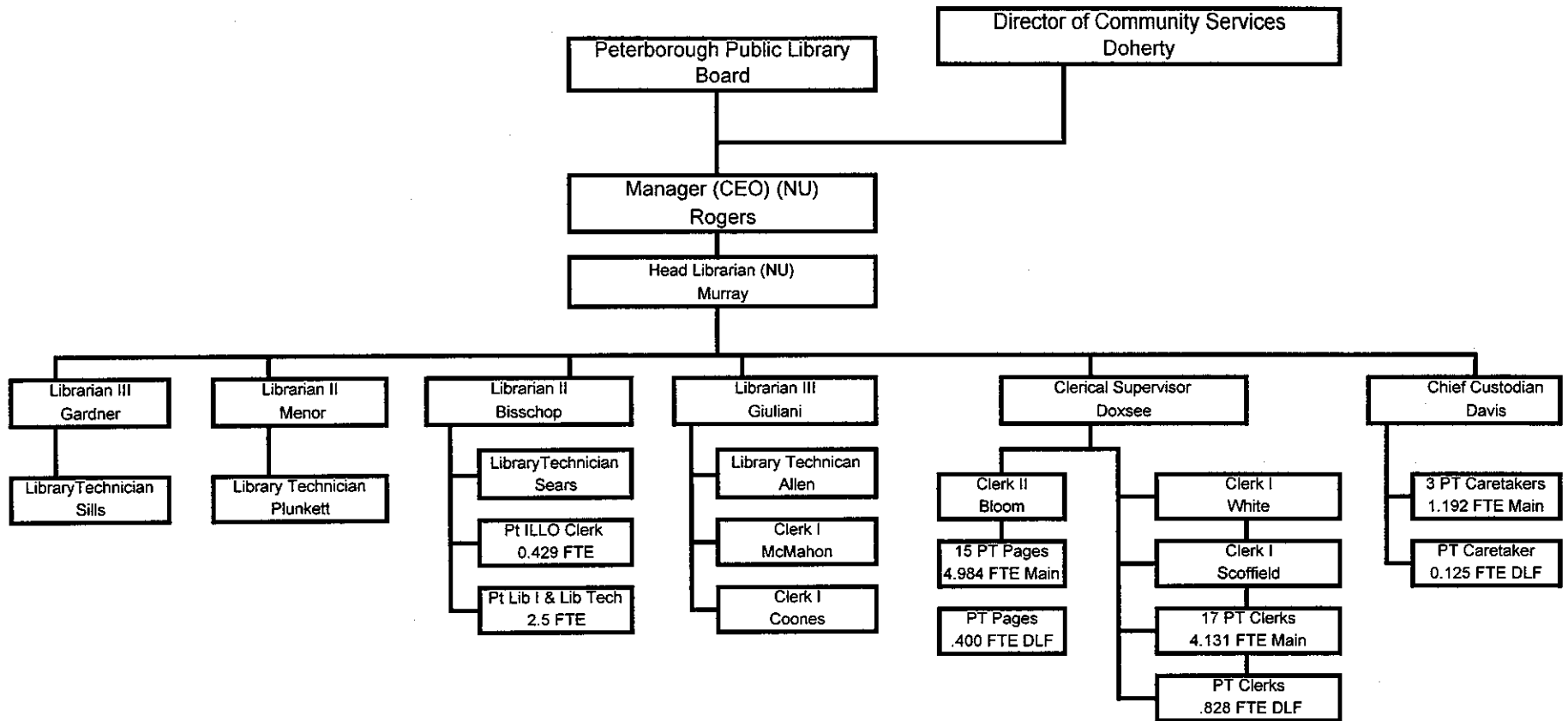
Community Services Department - Peterborough Centennial Museum & Archives



Staff Complement (ex Director & Manager)	
NU	1.000
L126	3.000
Subtotal Full Time	4.000
Part-time / Temporary / Charged to Capital	3.885
Total Full & Part time	7.885

Updated June 13, 2008

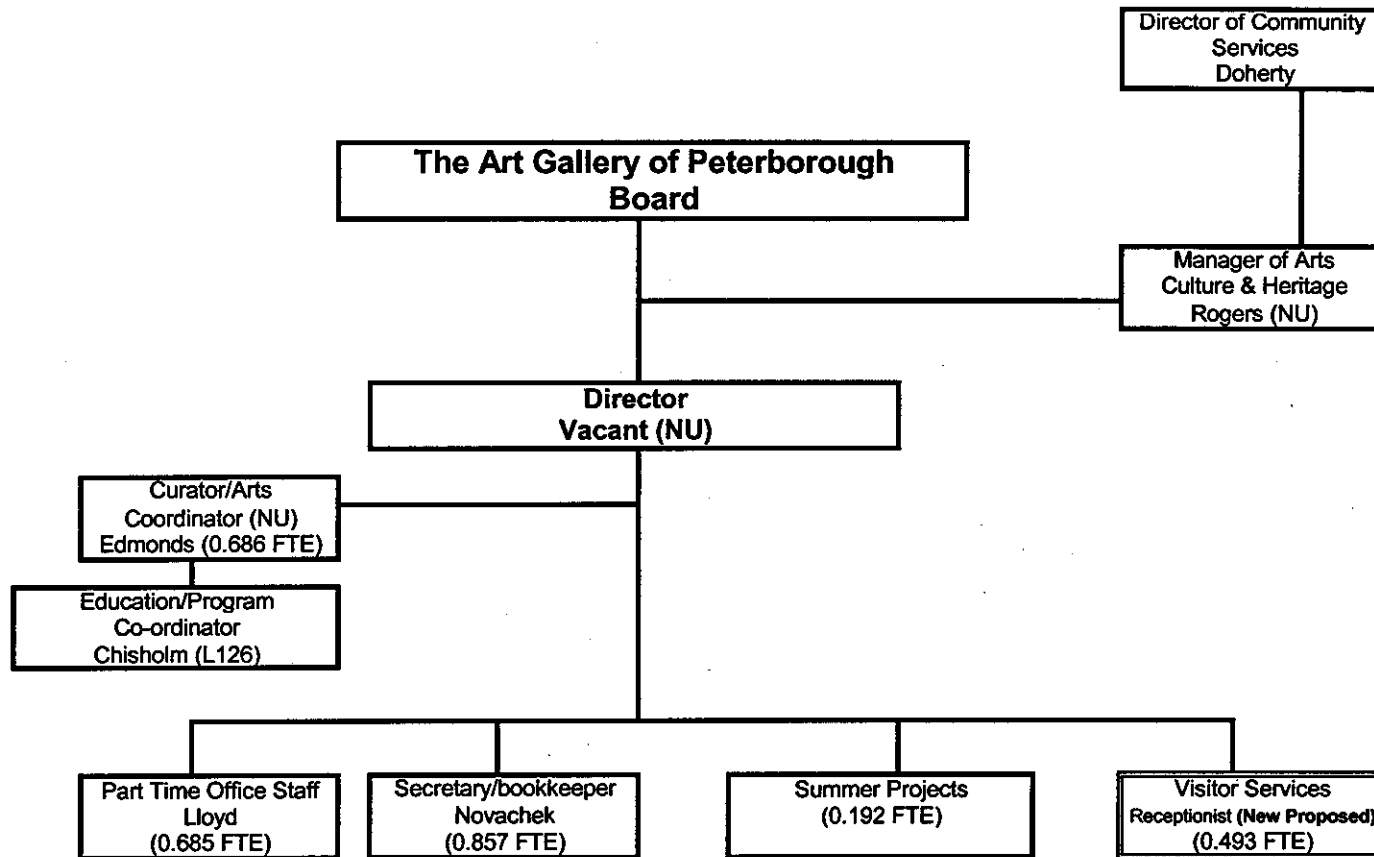
Community Services Department - Peterborough Public Library Board



Main Branch	
Non Union	1.750
Full-time	15.000
Part-time	13.236
Subtotal Main	29.986
De Lafosse	
Part-time	1.353
Grand total	31.339

Updated June 16, 2008

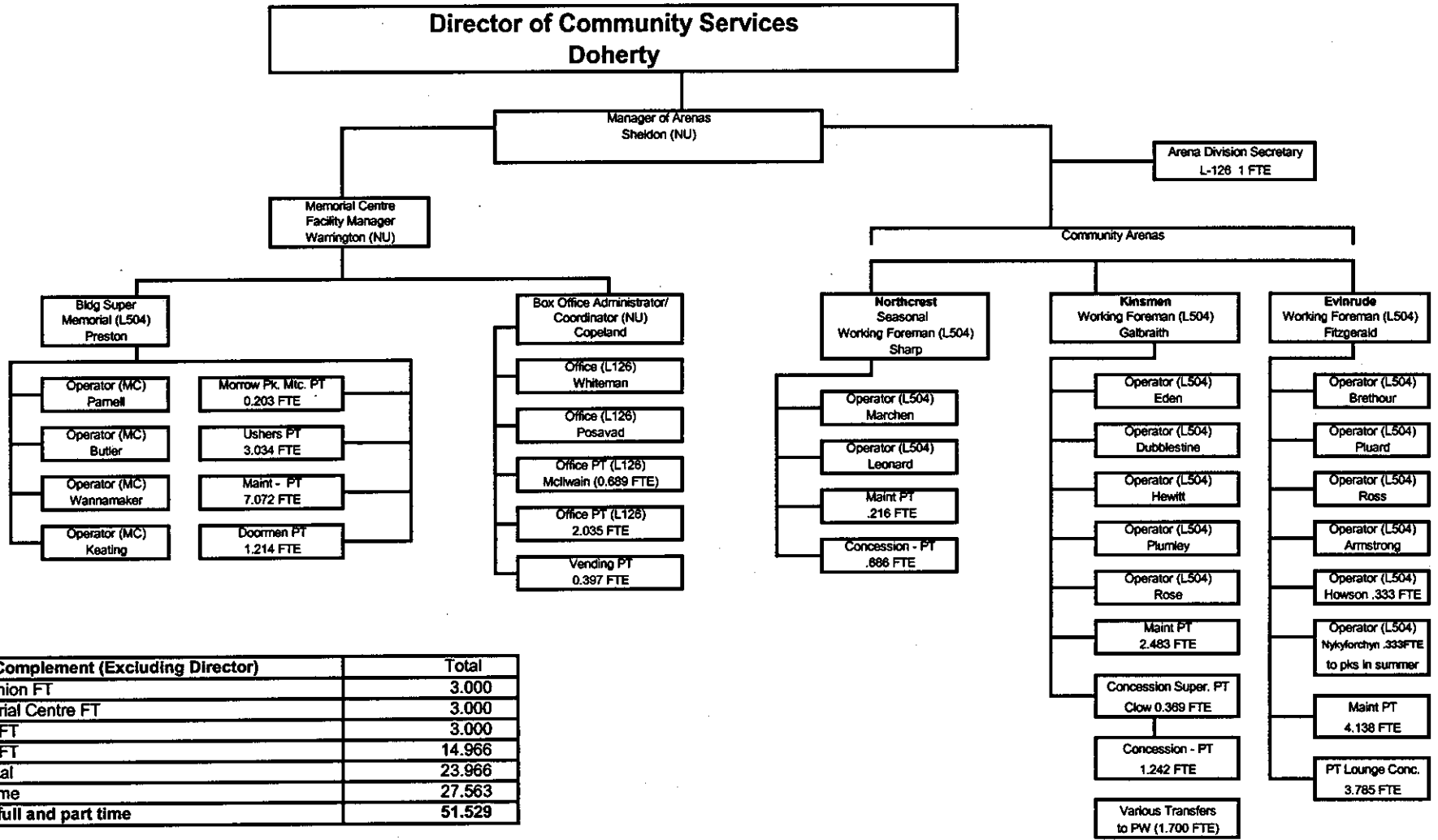
Community Services Department - Art Gallery of Peterborough



Staff Complement (ex Director & Manager)	
NU	1.686
L126	1.857
Subtotal Full Time	3,543
Part-time	1.371
Total Full & Part time	4.914

Updated October 24, 2008

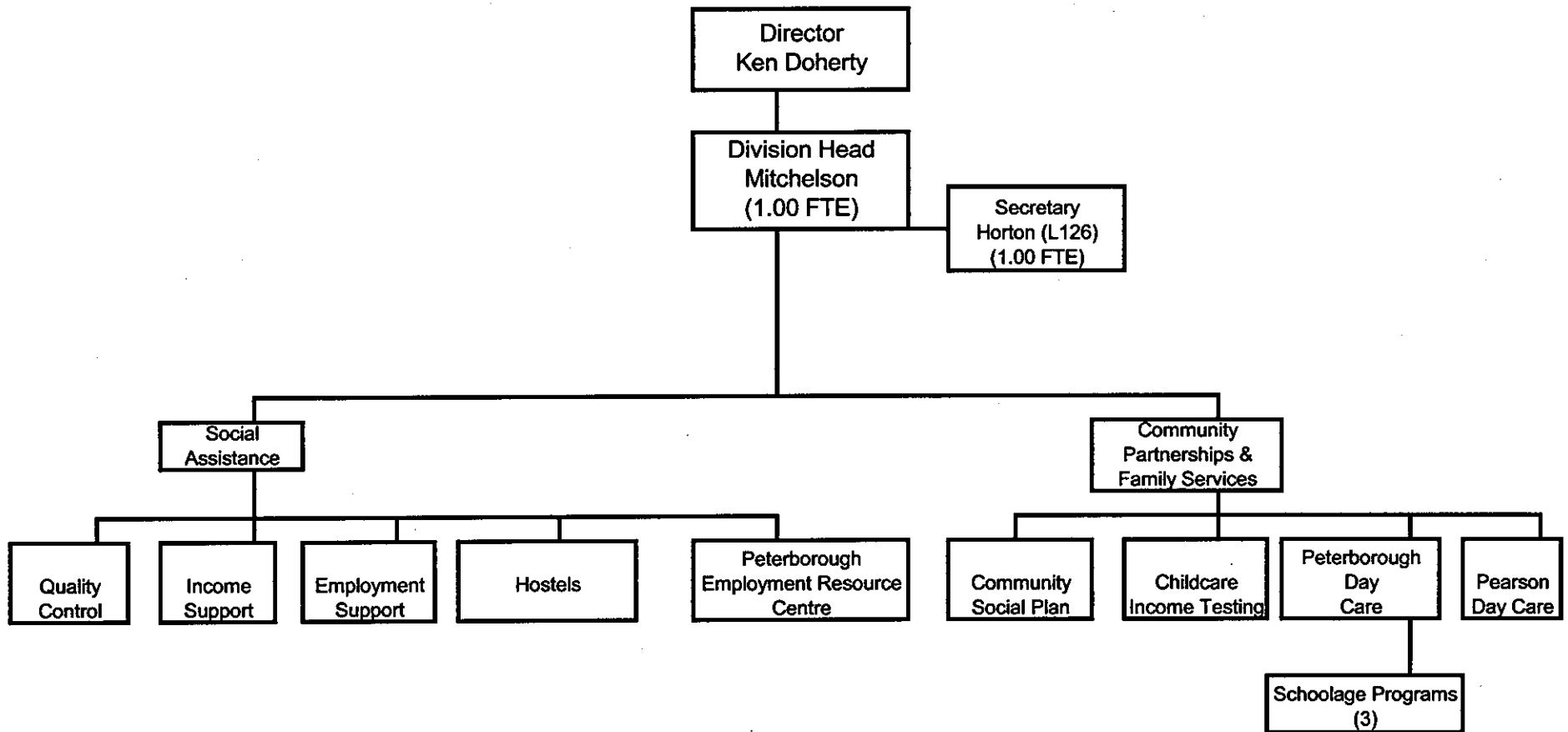
Community Services Department - Arenas Division



Staff Complement (Excluding Director)	Total
Non union FT	3.000
Memorial Centre FT	3.000
L 126 FT	3.000
L 504 FT	14.966
Subtotal	23.966
Part-time	27.563
Total full and part time	51.529

Updated June 16, 2008

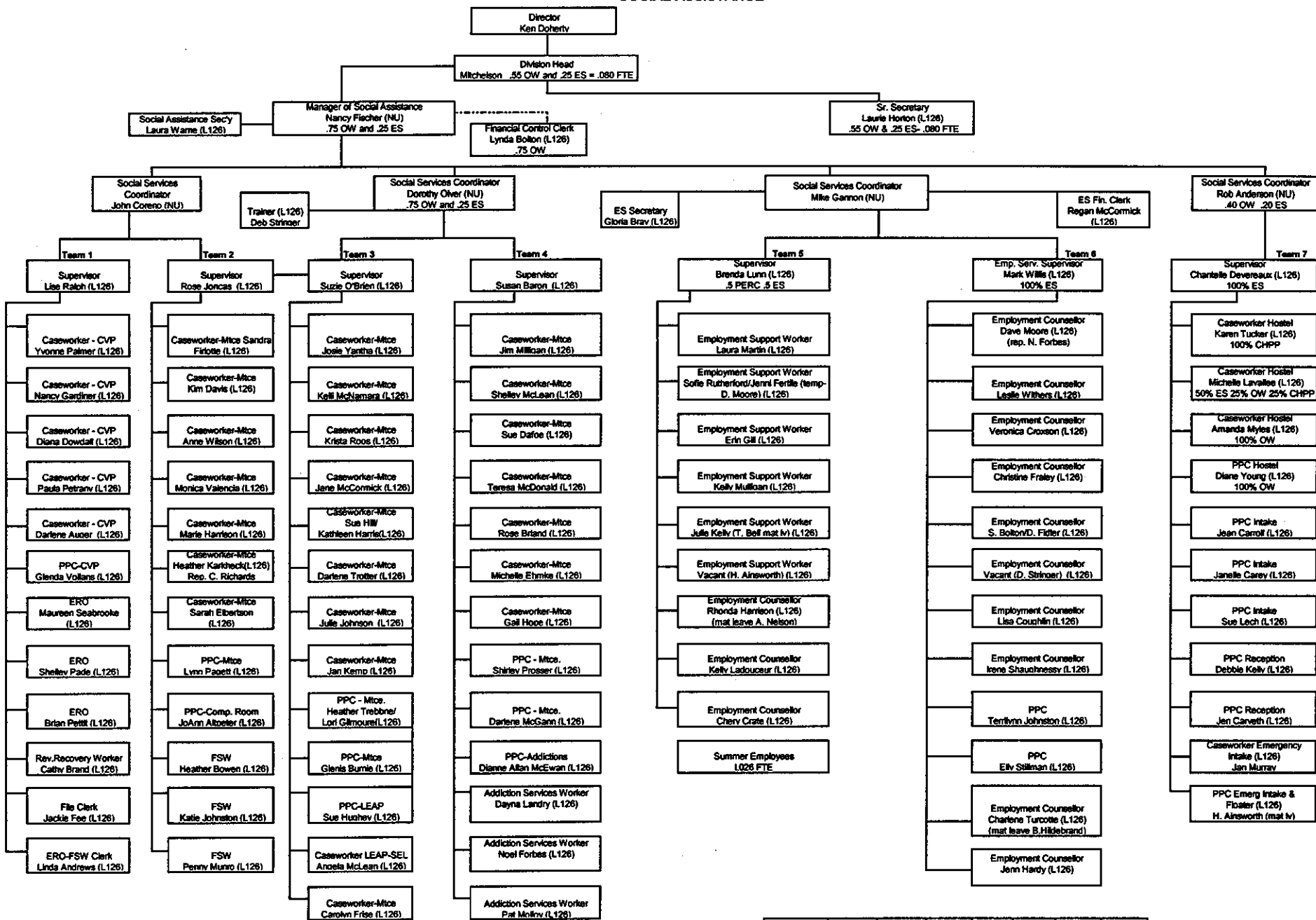
SOCIAL SERVICES



Updated October 24, 2008

STAFFING	Social Assistance	CPFS	Total
NU	5.400	2.600	8.000
L126	94.550	18.779	113.329
F/T Sub			
Total	99.950	21.379	121.329
P/T	1.026	5.325	6.351
TOTAL	100.976	26.704	127.680

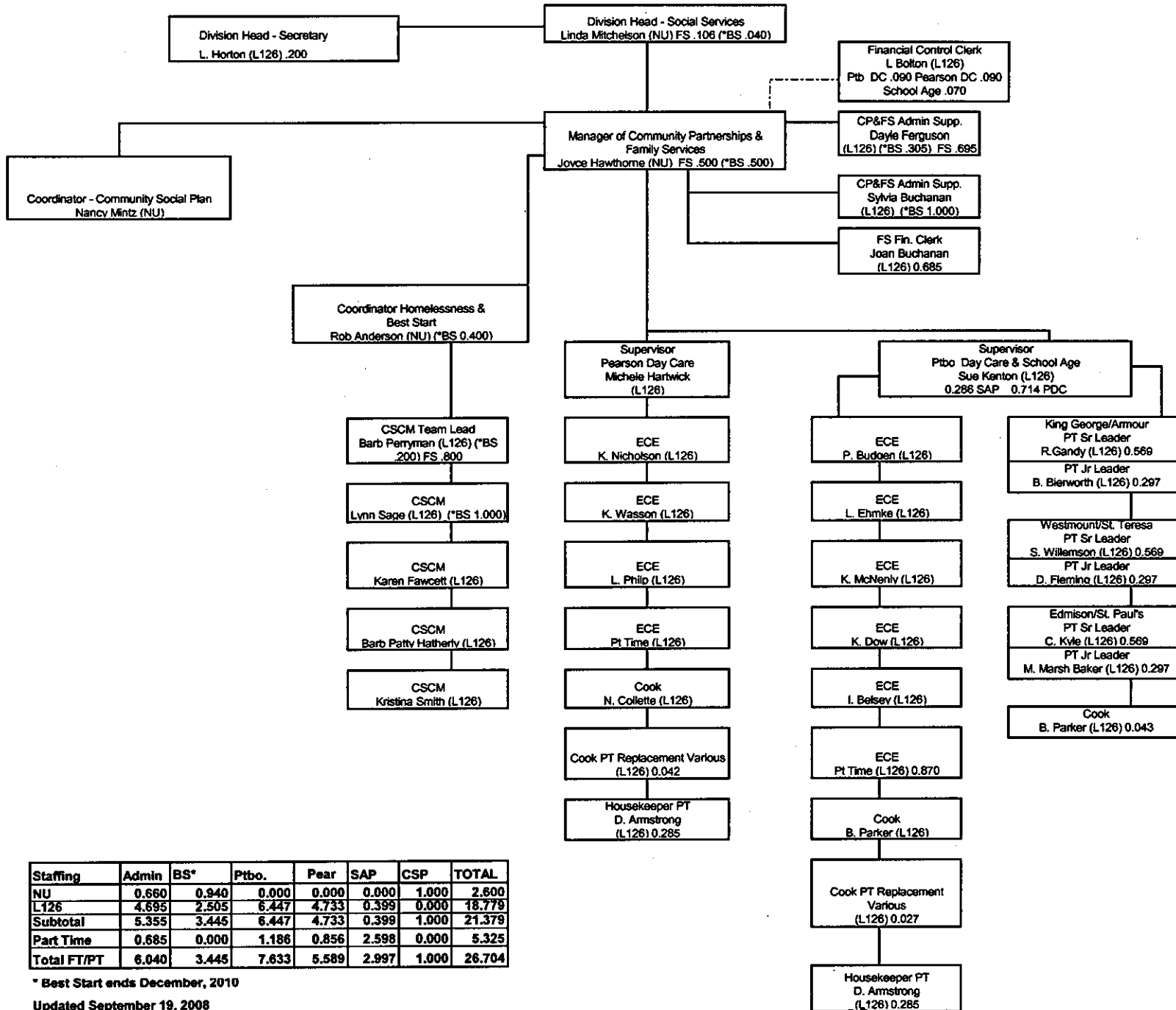
SOCIAL ASSISTANCE



Effective September 2006

FTE COUNT	OW Admin	ES incl. Leap	Addi- tions	CVP	Other	PERC	CHPP	TOTAL
	521	533	577	535	534	530	539	
NU	3,450	1,950	0,000	0,000	0,000	0,000	0,000	5,400
L126	56,550	22,250	4,000	2,000	2,000	6,500	1,250	84,550
FT Sub Total	60,000	24,200	4,000	2,000	2,000	6,500	1,250	99,950
P/T	1,026	0,000	0,000	0,000	0,000	0,000	0,000	1,026
TOTAL	61,026	24,200	4,000	2,000	2,000	6,500	1,250	100,976

Community Services Department
Social Services Division - Community Partnerships and Family Services Unit

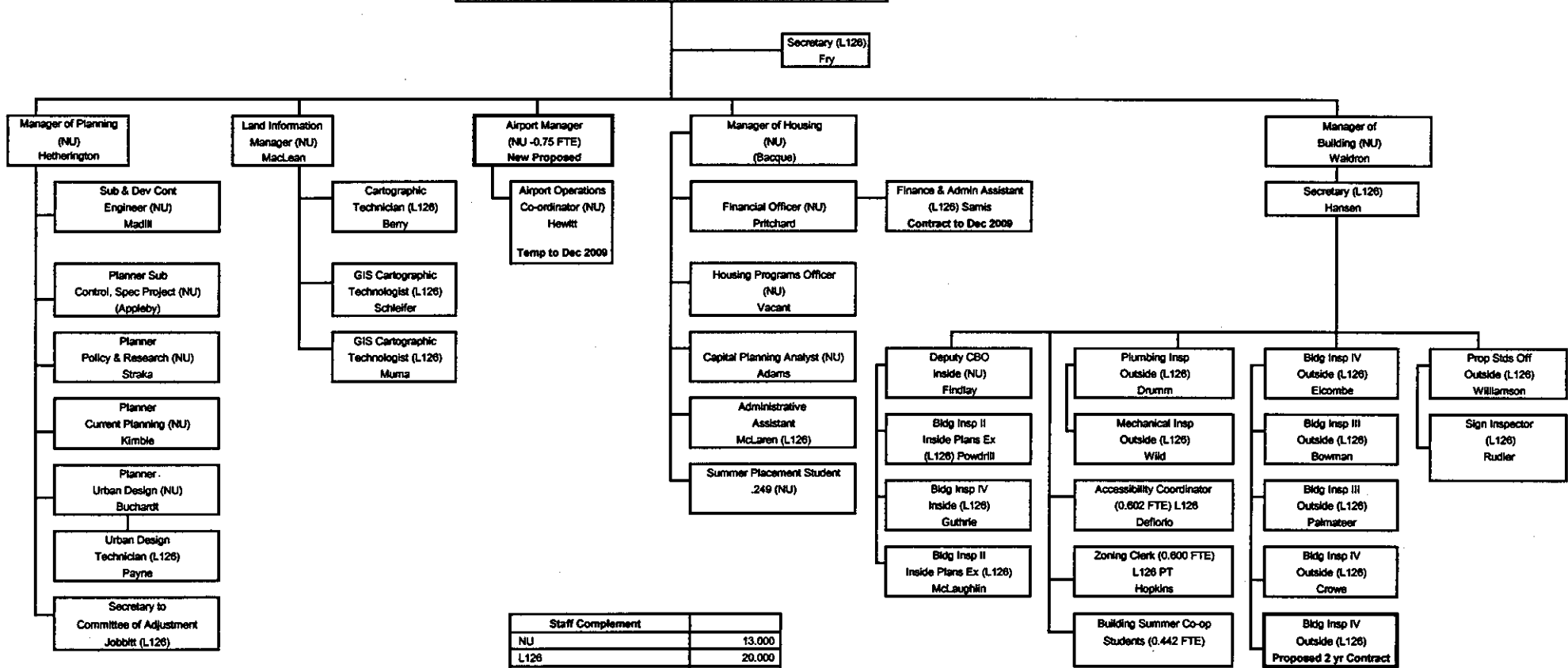


Staffing	Admin	BS*	Ptbo.	Pear	SAP	CSP	TOTAL
NU	0.660	0.940	0.000	0.000	0.000	1.000	2.600
L126	4.695	2.505	6.447	4.733	0.399	0.000	18.779
Subtotal	5.355	3.445	6.447	4.733	0.399	1.000	21.379
Part Time	0.685	0.000	1.186	0.856	2.598	0.000	5.325
Total FT/PT	6.040	3.445	7.633	5.589	2.997	1.000	26.704

* Best Start ends December, 2010
 Updated September 19, 2008

Planning and Development Services

Director of Planning and Development Services (NU)
Hunt



Staff Complement	
NU	13,000
L126	20,000
L 504	0,000
Subtotal Full Time (Op)	33,000
Part-time	2,395
NU Contract	2,000
L126 Contract	2,000
Total Full & Part time (Op)	39,395
Contract charged to Capital	0,000
Total Op and Capital	39,395

Updated October 24, 2008