

THE CORPORATION OF THE CITY OF PETERBOROUGH

BY-LAW NUMBER 07-161

**BEING A BY-LAW TO REMOVE A HOLDING SYMBOL FROM THE ZONING
BY-LAW FOR 277 LANSDOWNE STREET EAST**

WHEREAS pursuant to Section 36 of the Planning Act, R.S.O. 1990, c.P.13, a Holding Symbol was applied to the above lands by By-law;

AND WHEREAS, in the opinion of Council, the condition for the removal of the Holding Symbol has been satisfied;

**NOW THEREFORE THE CORPORATION OF THE CITY OF PETERBOROUGH BY THE
COUNCIL THEREOF ENACTS AS FOLLOWS:**

1. **Map 24** forming part of Schedule 'A' to By-law 97-123 is amended by changing the area shown on the sketch attached hereto as Schedule 'A' from **SP.268 – “H”** to **SP.268**

By-law read a first, second and third time this 13th day of November, 2007

(Sgd.) D. Paul Ayotte, Mayor

(Sgd.) Nancy Wright-Laking, City Clerk

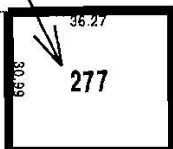
Diminensions are in metric



SCHEDULE 'A' TO
BYLAW 2007 -
PASSED THE DAY
OF 2007
MAYOR
CLERK

Change from
SP.268 -'H'
to SP.268

LANSDOWNE ST E



City of
Peterborough

EXHIBIT C
SHEET 2 OF 2

The "City of Peterborough," its employees, or agents, do not undertake to guarantee the validity of the contents of this digital or hardcopy mapfile, and will not be liable for any claims for damages or loss arising from their application or interpretation, by any party. It is not intended to replace a survey or to be used for legal description.

File: z0028

Scale: 1:1500