

THE CORPORATION OF THE CITY OF PETERBOROUGH

BY-LAW NUMBER 06-150

(amended by 07-044)

BEING A BY-LAW TO AMEND THE ZONING FOR 300 SPILLSBURY DRIVE

THE CORPORATION OF THE CITY OF PETERBOROUGH BY THE COUNCIL THEREOF HEREBY ENACTS AS FOLLOWS:

1. Section 3.9 Exceptions of By-law 97-123 is hereby amended by adding the following:

Exception Number

“.228

Provisions

Notwithstanding the provisions of Section 11 the following provisions shall apply:

- i) the maximum number of dwelling units is 90;
- ii) the maximum number of storeys is 3;
- iii) the maximum lot coverage by open parking, driveways and vehicle movement areas is 35%”

2. **Map 20** forming part of Schedule ‘A’ to By-law 97-123 is amended by changing the area shown on the sketch attached hereto as Schedule ‘A’ **from R.31, 10e – Residential District to R.5 – 228 – ‘H’ Residential District.**

3. Deleted by 06-150

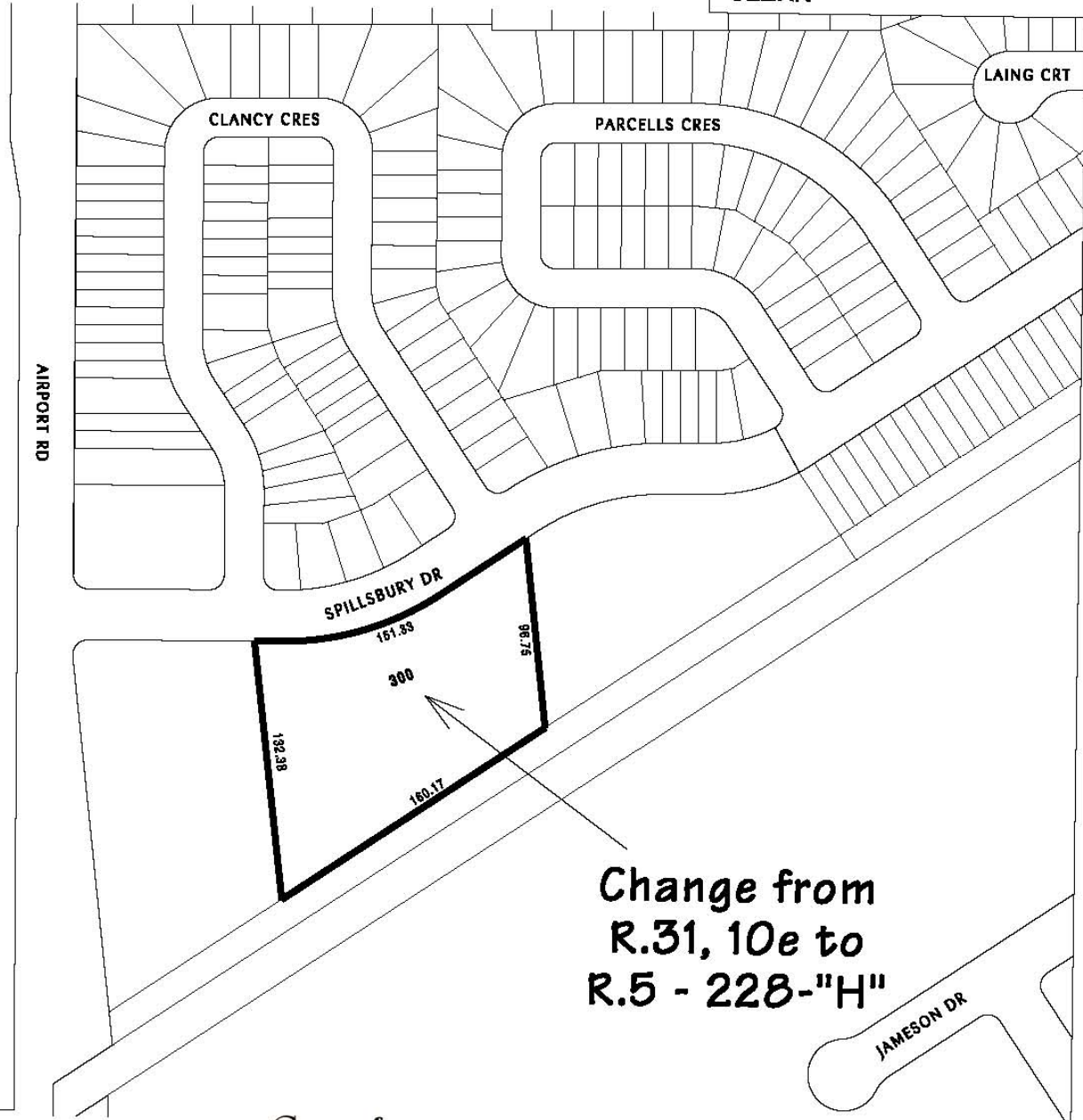
By-law read a first, second and third time this 11th day of September, 2006.

(Sgd.) Sylvia Sutherland, Mayor

(Sgd.) Nancy Wright-Laking, City Clerk

Dimensions are in metric

SCHEDULE 'A' TO
BYLAW 2006 - 150
PASSED THE 11 DAY
OF September 2006
MAYOR
CLERK



**Change from
R.31, 10e to
R.5 - 228-"H"**

**City of
Peterborough**

The "City of Peterborough," its employees, or agents, do not undertake to guarantee the validity of the contents of this digital or hardcopy mapfile, and will not be liable for any claims for damages or loss arising from their application or interpretation, by any party. It is not intended to replace a survey or to be used for legal description.

File: z0602

Scale: 1:3000