

**THE CORPORATION OF THE CITY OF PETERBOROUGH**

**BY-LAW NUMBER 05-214  
(As amended by 08-041)**

**BEING A BY-LAW TO AMEND THE ZONING BY-LAW FOR PART OF 1170  
ARMOUR ROAD (WAVERLEY HEIGHTS SUBDIVISION)**

**THE CORPORATION OF THE CITY OF PETERBOROUGH BY THE COUNCIL  
THEREOF ENACTS AS FOLLOWS:**

1. **Map 8** forming part of Schedule 'A' to By-law 1997-123 is amended by changing the areas shown on the sketch attached hereto as **Schedule "A"** from **R.1-'H'; R.1,1m,2m; R.1,1m,2m-'H'** and **R.1, 1k, 2k-Residential Districts and OS.1 – Open Space District** to **R.1-162 – 'H'; R.1,1m,2m-'H'** and **R.1,1m,2m-162-'H'** - Residential Districts and **OS.2 – Open Space District.**
2. **Deleted (By-law 08-041)**

By-law read a first and second time this 3<sup>rd</sup> day of October, 2005

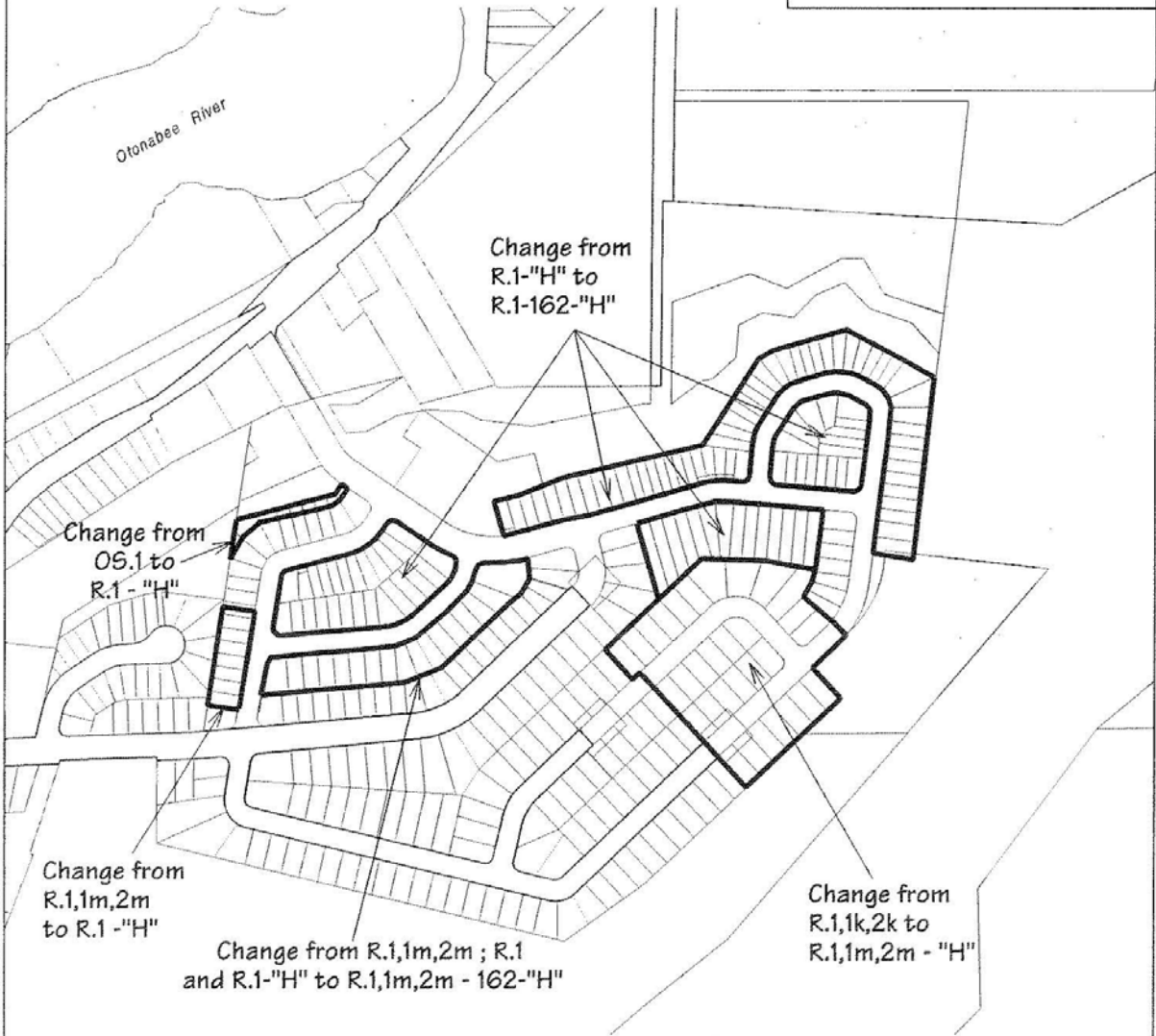
By-law read a third time and finally passed this 3<sup>rd</sup> day of October, 2005

(Sgd.) Sylvia Sutherland, Mayor

(Sgd.) Nancy Wright-Laking, City Clerk



SCHEDULE 'A' TO  
 BYLAW 2005 -  
 PASSED THE DAY  
 OF 2005  
 MAYOR  
 CLERK



City of  
**Peterborough**

The "City of Peterborough," its employees, or agents, do not undertake to guarantee the validity of the contents of this digital or hardcopy mapfile, and will not be liable for any claims for damages or loss arising from their application or interpretation, by any party. It is not intended to replace a survey or to be used for legal description.

File: z0506sb Scale: 1:5600