

THE CORPORATION OF THE CITY OF PETERBOROUGH

BY-LAW NUMBER 04-071

BEING A BY-LAW TO AMEND THE ZONING BY-LAW FOR 2250
DENURE DRIVE

THE CORPORATION OF THE CITY OF PETERBOROUGH BY THE COUNCIL
THEREOF HEREBY ENACTS AS FOLLOWS:

1. Section 3.9 Exceptions of By-law 97-123 is hereby amended by adding the following:

<u>Exception Number</u>	<u>Provisions</u>
“.220	”Notwithstanding the provisions of Section 303.2(a), a maximum of seven (7) dwelling units shall be permitted in a row dwelling.
2.	Map 9 forming part of Schedule ‘A’ to By-law 1997-123 is amended by changing the area shown on the sketch attached hereto as Schedule ‘A’ from D.2 and R.1 to R.1 – “H” ; R.1, 2m – “H” ; SP.273-220 – “H” ; OS.1 and OS.2.
3.	The “H” Holding Symbol shall be removed from the Zoning by-law upon the registration of the Plan of Subdivision.
4.	The By-law shall come into effect upon the approval of Official Plan Amendment No. 128 which serves to adopt a new Schedule ‘G’ – Jackson Creek Secondary Plan to the Official Plan.”

By-law read a first and second time this 26th day of April 2004.

By-law read a third time and finally passed this 26th day of April 2004.

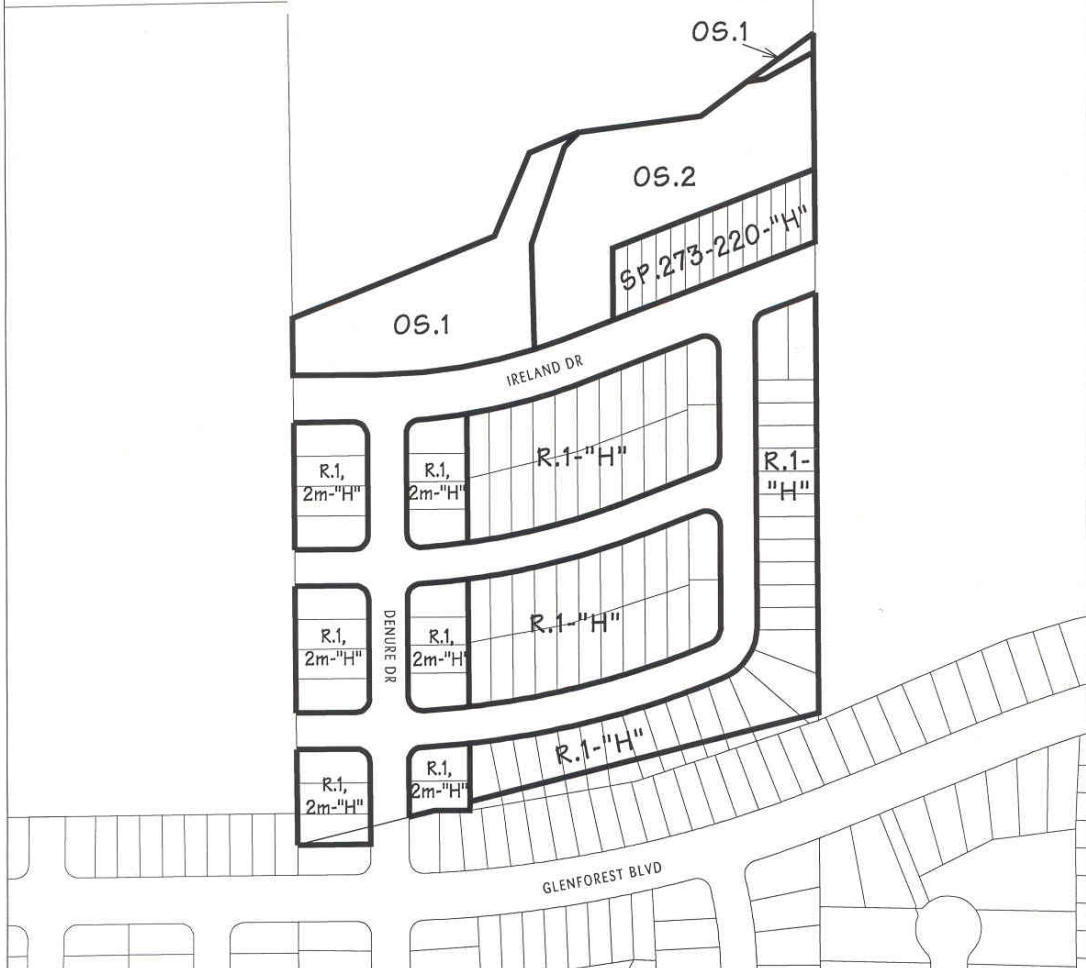
(Sgd.) Sylvia Sutherland, Mayor

(Sgd.) Nancy Wright-Laking, City Clerk



Change from D.2 and R.1
to the Zoning as Presented

SCHEDULE 'A' TO
BYLAW 2004 -
PASSED THE DAY
OF 2004
MAYOR
CLERK



City of
Peterborough

The "City of Peterborough," its employees, or agents, do not undertake to guarantee the validity of the contents of this digital or hardcopy mapfile, and will not be liable for any claims for damages or loss arising from their application or interpretation, by any party. It is not intended to replace a survey or to be used for legal description.

File: Z0334sb Scale: 1:3000