

THE CORPORATION OF THE CITY OF PETERBOROUGH

BY-LAW NUMBER 02-135

BEING A BY-LAW TO AMEND THE ZONING BY-LAW 780 FORTYE DRIVE

THE CORPORATION OF THE CITY OF PETERBOROUGH BY THE COUNCIL THEREOF ENACTS AS FOLLOWS:

1. **Map 20** forming part of Schedule 'A' to By-law 1997-123 is amended by changing the area shown on the sketch attached hereto as **Schedule 'A' from D.2-96-Development District to R.1 – "H" – Residential District and OS.1 – Open Space District.**

2. **The "H" – Holding Symbol shall be removed from the Zoning By-law upon severance approval being granted by the Committee of Adjustment and the registration of the Plan.**

By-law read a first and second time this 7th day of October, 2002

By-law read a third time and finally passed this 7th day of October, 2002.

(Sgd.) Sylvia Sutherland, Mayor

(Sgd.) Nancy Wright-Laking, City Clerk

Diminensions are in metric

SCHEDULE 'A' TO
BYLAW 2002 - 135
PASSED THE 2nd DAY
OF October 2002

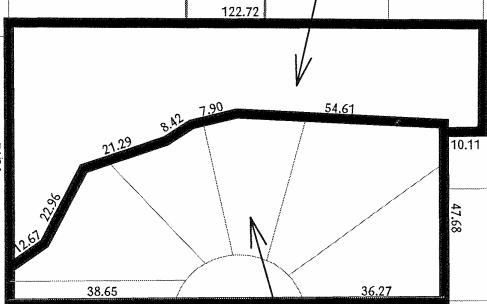
MAYOR *D. Sullivan*

CLERK *Wendy Light*



FORSTER AVE

Change from
D.2-96 to OS.1



PINEWOOD DR

SPILLSBURY DR

FORTYE DR

Change from
D.2-96 to R.1-'H'

Peterborough City of

The "City of Peterborough," its employees, or agents, do not undertake to guarantee the validity of the contents of this digital or hardcopy mapfile, and will not be liable for any claims for damages or loss arising from their application or interpretation, by any party. It is not intended to replace a survey or to be used for legal description.

File: z0212

Scale: 1:1500