

**THE CORPORATION OF THE CITY OF PETERBOROUGH**

**BY-LAW NUMBER 02-023**

**A BY-LAW TO REMOVE A HOLDING SYMBOL FROM  
THE ZONING BY-LAW FOR  
336 LANSDOWNE STREET EAST**

**WHEREAS** pursuant to Section 36 of the Planning Act, R.S.O. 1990, c.P.13, a Holding Symbol was applied to the above lands by By-law 99-104;

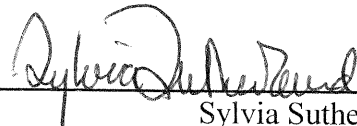
**AND WHEREAS**, in the opinion of Council, the condition for the removal of the Holding Symbol has been satisfied;

**NOW THEREFORE THE CORPORATION OF THE CITY OF PETERBOROUGH BY THE COUNCIL THEREOF ENACTS AS FOLLOWS:**

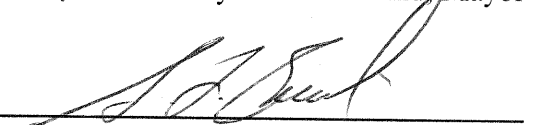
1. Paragraph 3 of By-law 99-104 is hereby deleted.
2. Map 18 forming part of Schedule 'A' to By-law 97-123 is amended by changing the area shown on the sketch attached hereto as Schedule 'A' from **SP. 266 -'H'** to **SP.266**.

By-law read a first and second time this 11th day of February, 2002

By-law read a third time and finally passed this 11th day of February, 2002



Sylvia Sutherland, Mayor



Steven Brickell, City Clerk

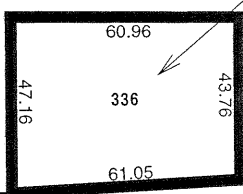
Dimensions are in metric

SCHEDULE 'A' TO  
BYLAW 2002 - 023  
PASSED THE 11<sup>th</sup> DAY  
OF February 2002

MAYOR *D. Duthart*  
CLERK *A. Bell*



Change from  
SP.266 'H'  
to SP. 266



LANSDOWNE ST E

CONSUMERS PL



City of  
Peterborough

The "City of Peterborough," its employees, or agents, do not undertake to guarantee the validity of the contents of this digital or hardcopy mapfile, and will not be liable for any claims for damages or loss arising from their application or interpretation, by any party. It is not intended to replace a survey or to be used for legal description.

File: z9414

Scale: 1: 2000