

**THE CORPORATION OF THE CITY OF PETERBOROUGH**

**BY-LAW NUMBER 01--053**

**A BY-LAW TO AMEND THE ZONING BY-LAW  
FOR 288 LANSDOWNE STREET WEST AND  
186-184 PARK STREET SOUTH**

**THE CORPORATION OF THE CITY OF PETERBOROUGH BY THE COUNCIL  
THEREOF ENACTS AS FOLLOWS:**

1. Section 45 of By-law 97-123 is hereby deleted and the following is substituted therefor:

"SECTION 45

SPECIAL DISTRICT (SP.17)

45.1 For the purpose of this by-law, land use district "Special District 17 " is hereby established and may be referred to as the symbol SP.17.

**PERMITTED USES**

45.2 No person shall within an SP.17 district use any land or erect, alter or use any building or part thereof for any purpose other than:

- a) Retail establishment for the sale of furniture and appliances

**REGULATIONS**

45.3 No person shall within an SP.17 district use any land or erect, alter or use any building or part thereof except in accordance with the following regulations:

|   |  |
|---|--|
| a) maximum retail floor area  | 375 square metres  |
| b) maximum building height  | 2 storeys  |
| c) minimum building setback:<br>i) southeast side lot line<br>ii) south side of public laneway<br>iii) centre line of Lansdowne Street West | 3.6 metres<br>the existing or 3.6 metres, which ever is the greater<br>13 metres |

|   |                                      |
|---|--------------------------------------|
| d) no building, accessory building, waste receptacle or garbage enclosure may be erected or located at 184 Park Street South.   |                                      |
| e) notwithstanding the provisions of Section 4.2 (B), a minimum of 9 motor vehicle parking spaces shall be provided and maintained within the district.   |                                      |
| f) landscaped open space shall be provided and maintained in accordance with the following:<br>i) southeast side lot line, southerly 20 metres<br>ii) southeast side lot line, northerly 4.3 metres<br>iii) northeast side lot line | 3.6 metres<br>0 metres<br>1.5 metres |

45.4 SP.17 is hereby designated as a commercial district".

2. **Map 18** forming part of Schedule 'A' to By-law 97-123 is amended by changing the area shown on the sketch attached hereto as Schedule 'A' from **R.1, R.2, SP.17-41 and SP.17 to SP.17-'H'**.

3. The 'H' - Holding Symbol shall be removed at such time that a Site Plan has been approved, pursuant to Section 41 of the Planning Act.

By-law read a first and second time this 17<sup>th</sup> day of April, 2001.

By-law read a third time and finally passed this 17<sup>th</sup> day of April, 2001.

(Sgd.) Paul Ayotte, Deputy Mayor

(Sgd.) Steven Brickell, City Clerk

Dimensions are in metric

SCHEDULE 'A' TO  
BYLAW 2001 - 053  
PASSED THE 7th DAY  
OF April 2001  
DEPUTY  
MAYOR *[Signature]*  
CLERK *[Signature]*



PARK ST S

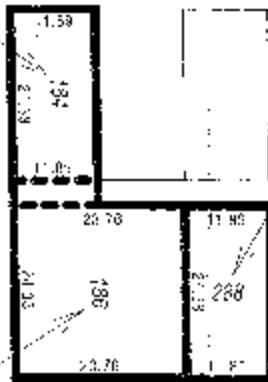
Change from  
SP.17-41 to  
SP.17- 'H'

PRINCE ST

Change from  
R.1,R.2 to  
SP.17- 'H'

Change from  
SP.17 to  
SP.17- 'H'

LANSDOWNE ST W



City of  
Peterborough

File: 20058

Scale 1: 600