

THE CORPORATION OF THE CITY OF PETERBOROUGH

BY-LAW NUMBER 01-023

**BEING A BY-LAW TO AMEND THE ZONING BY-LAW
1340 Brealey Drive**

**THE CORPORATION OF THE CITY OF PETERBOROUGH BY THE COUNCIL
THEREOF ENACTS AS FOLLOWS:**

1. **Map 9** forming part of Schedule 'A' to By-law 1997-123 is amended by changing the area shown on the sketch attached hereto as **Schedule 'A'** from **D.1 and D.2 to R.1 "H"; R.1,2s - "H", R.1, 2k - "H" and OS.1.**
2. **The "H" - Holding Symbol shall be removed from the Zoning By-law upon the registration of the Plan of Subdivision, except as follows: The "H" Holding Symbol shall be removed from the Zoning By-law for Lots 127 and 128 once municipal services are available along Sherbrooke Street and a Site Plan showing a driveway design accommodating on-site vehicular turnaround is approved.**

This By-law shall come into effect upon the approval of Official Plan Amendment No. 113.

By-law read a first and second time this 12th day of February, 2001

By-law read a third time and finally passed this 12th day of February, 2001

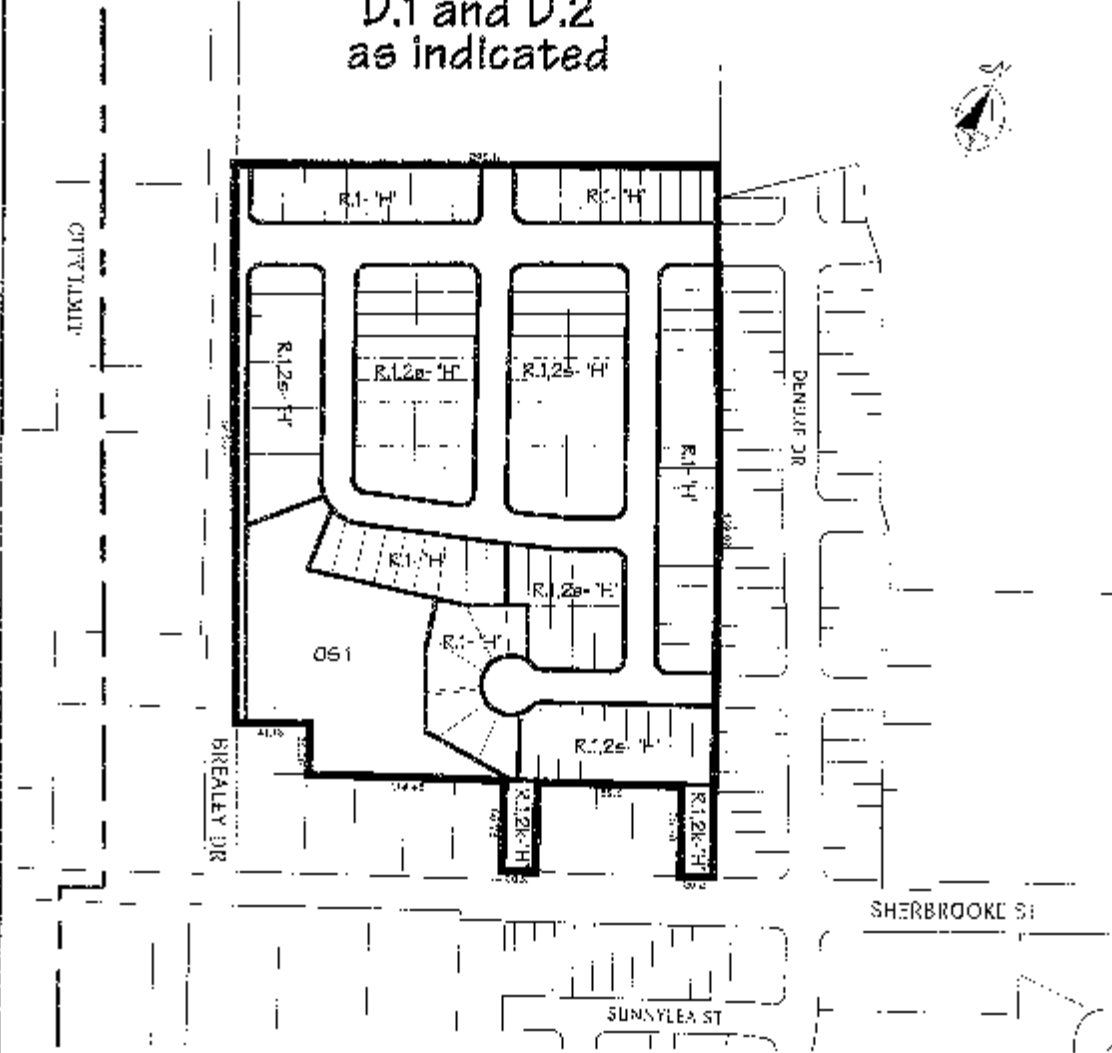
(Sgd.) Sylvia Sutherland, Mayor

(Sgd.) Steven Brickell, City Clerk

Dimensions are in metric

SCHEDULE 'A' TO
BYLAW 2001 - 023
PASSED THE 12th DAY
OF February 2001
MAYOR *[Signature]*
CLERK *[Signature]*

Change From
D.1 and D.2
as indicated



City of
Peterborough

File: 20032

Scale: 1:3500